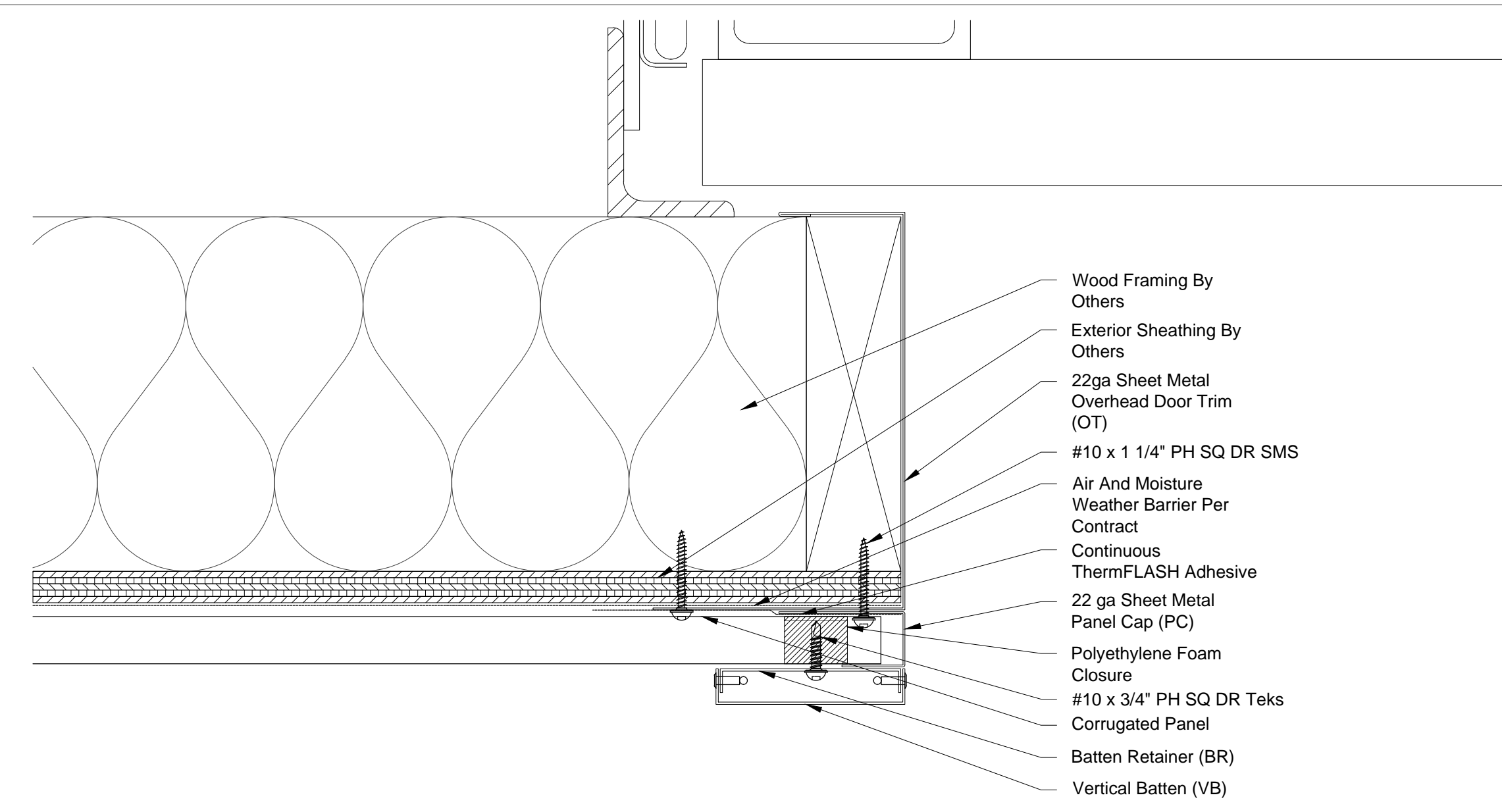
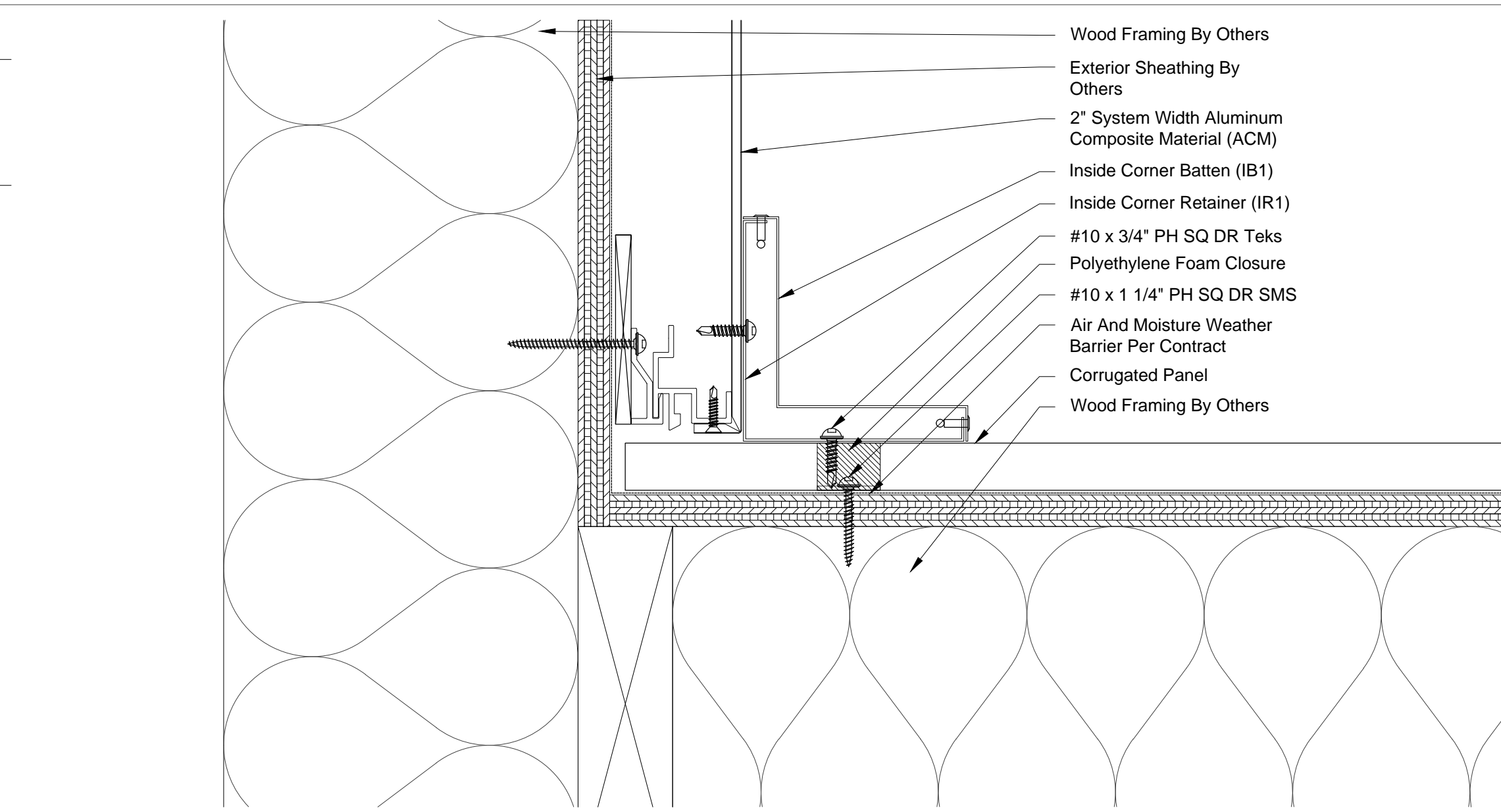


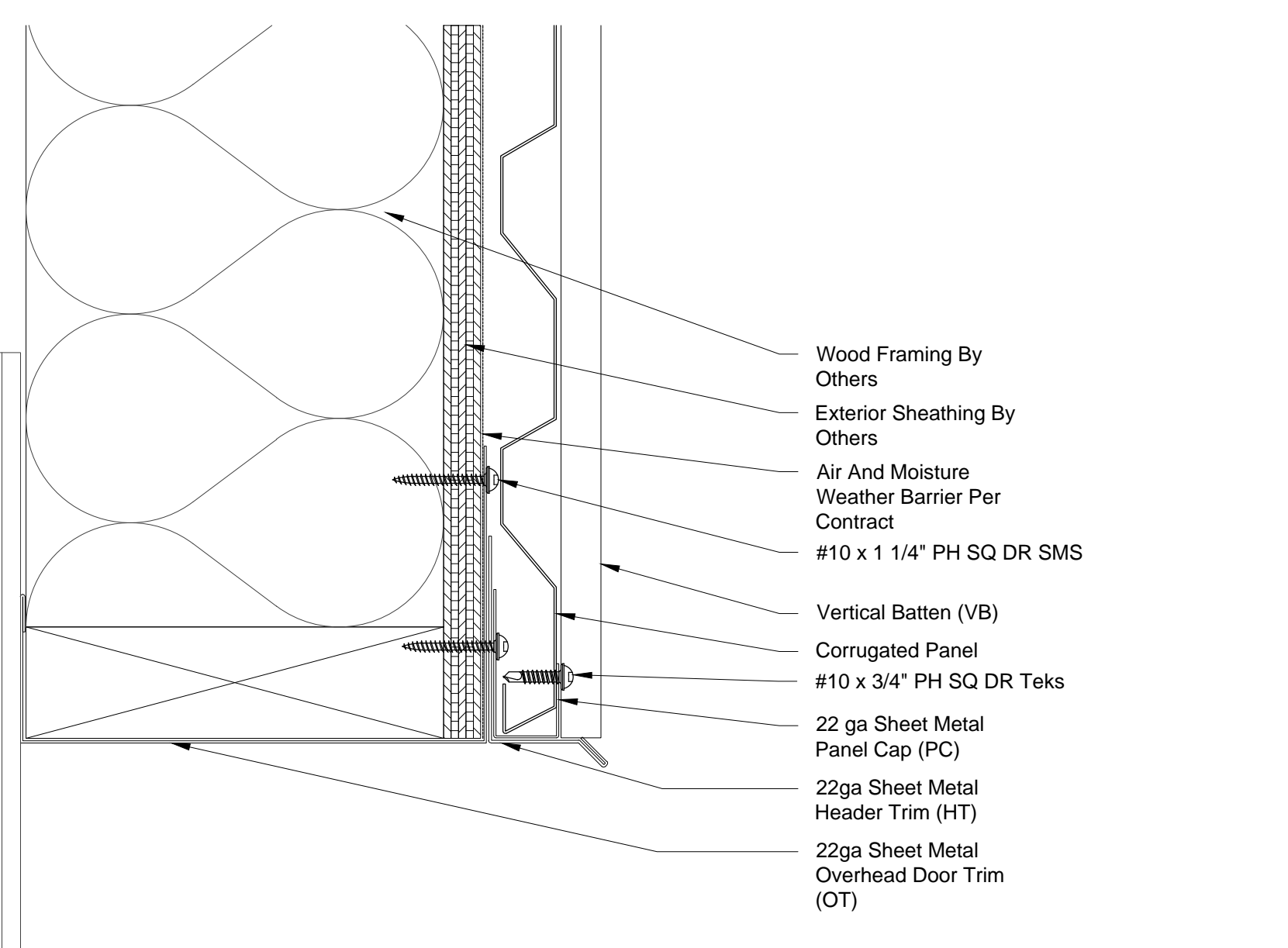
10 Corrugated @ Door Header - Wood Framing  
6" = 1'-0"



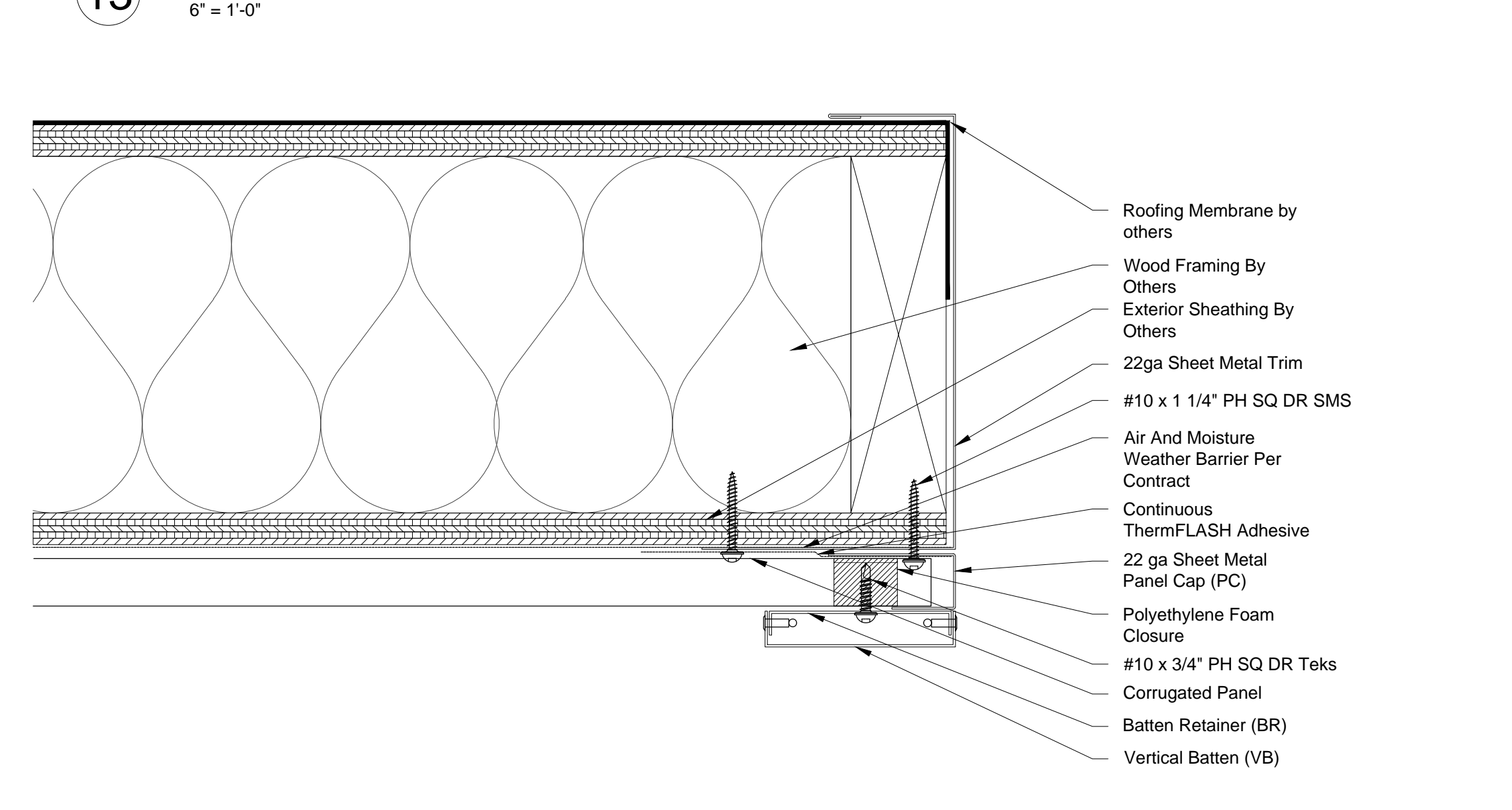
13 Corrugated @ Overhead Door Jamb - Wood Framing  
6" = 1'-0"



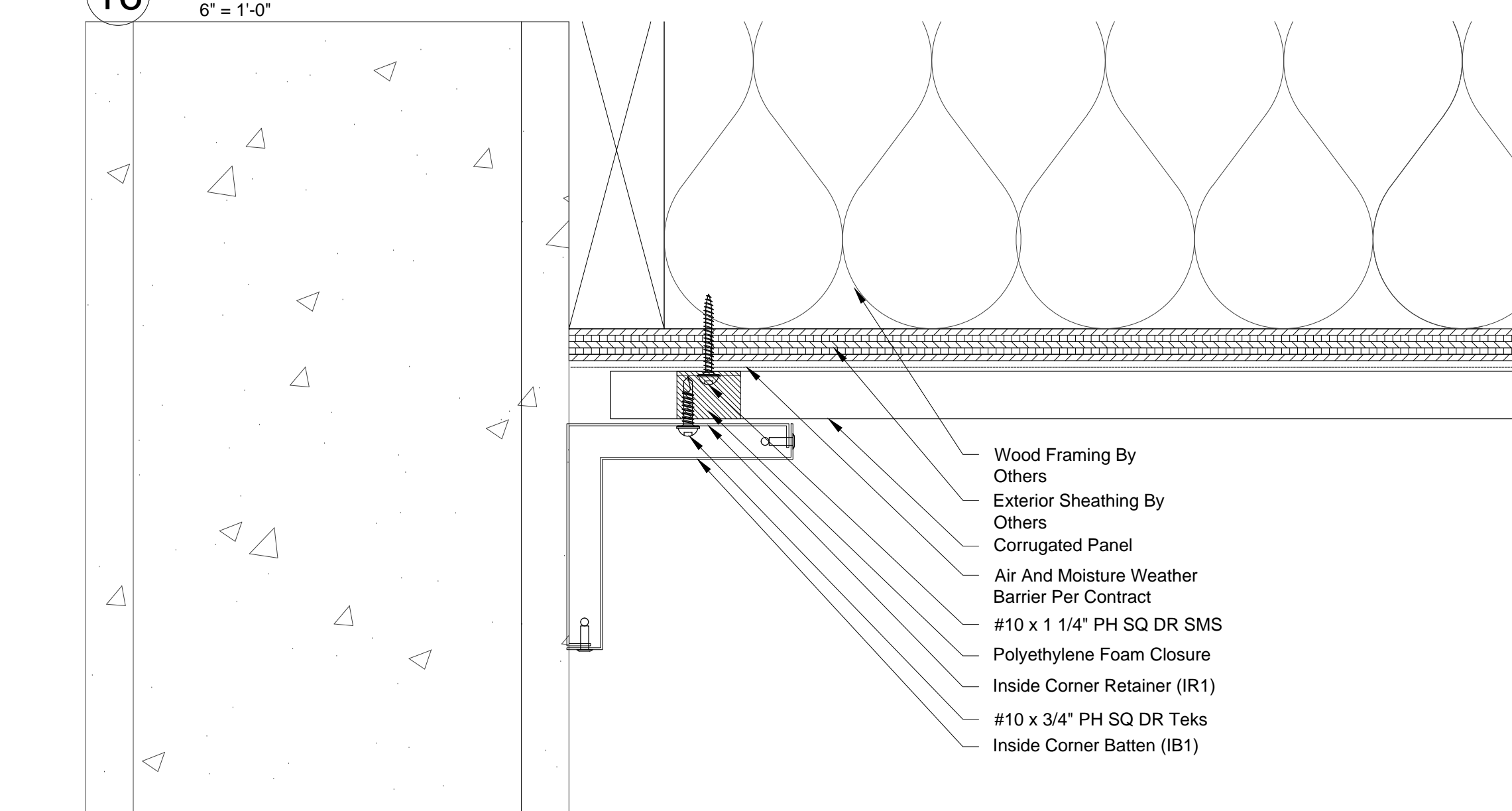
16 Corrugated @ Inside Corner to ACM - Wood Framing  
6" = 1'-0"



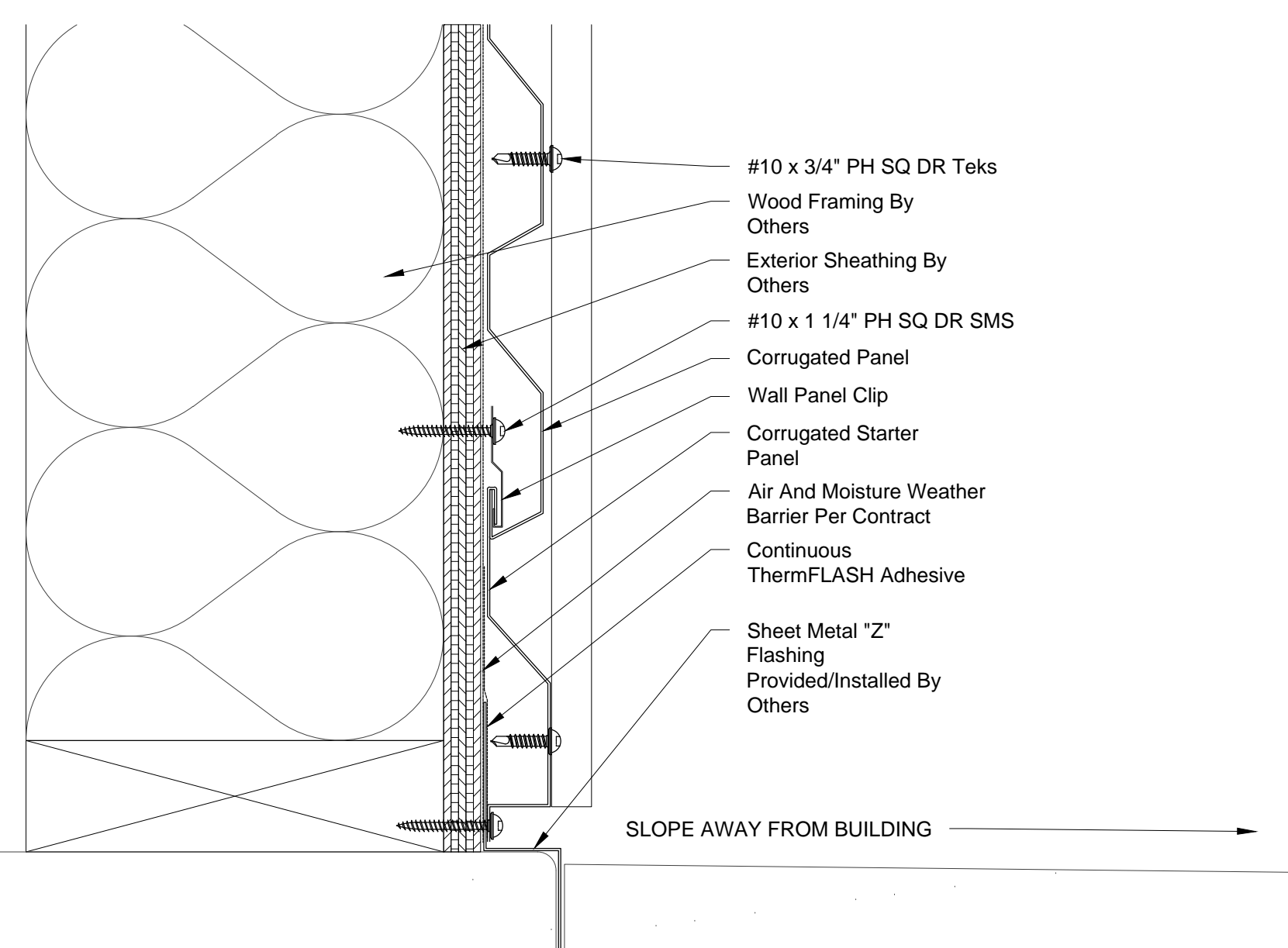
11 Corrugated @ Overhead Door Header - Wood Framing  
6" = 1'-0"



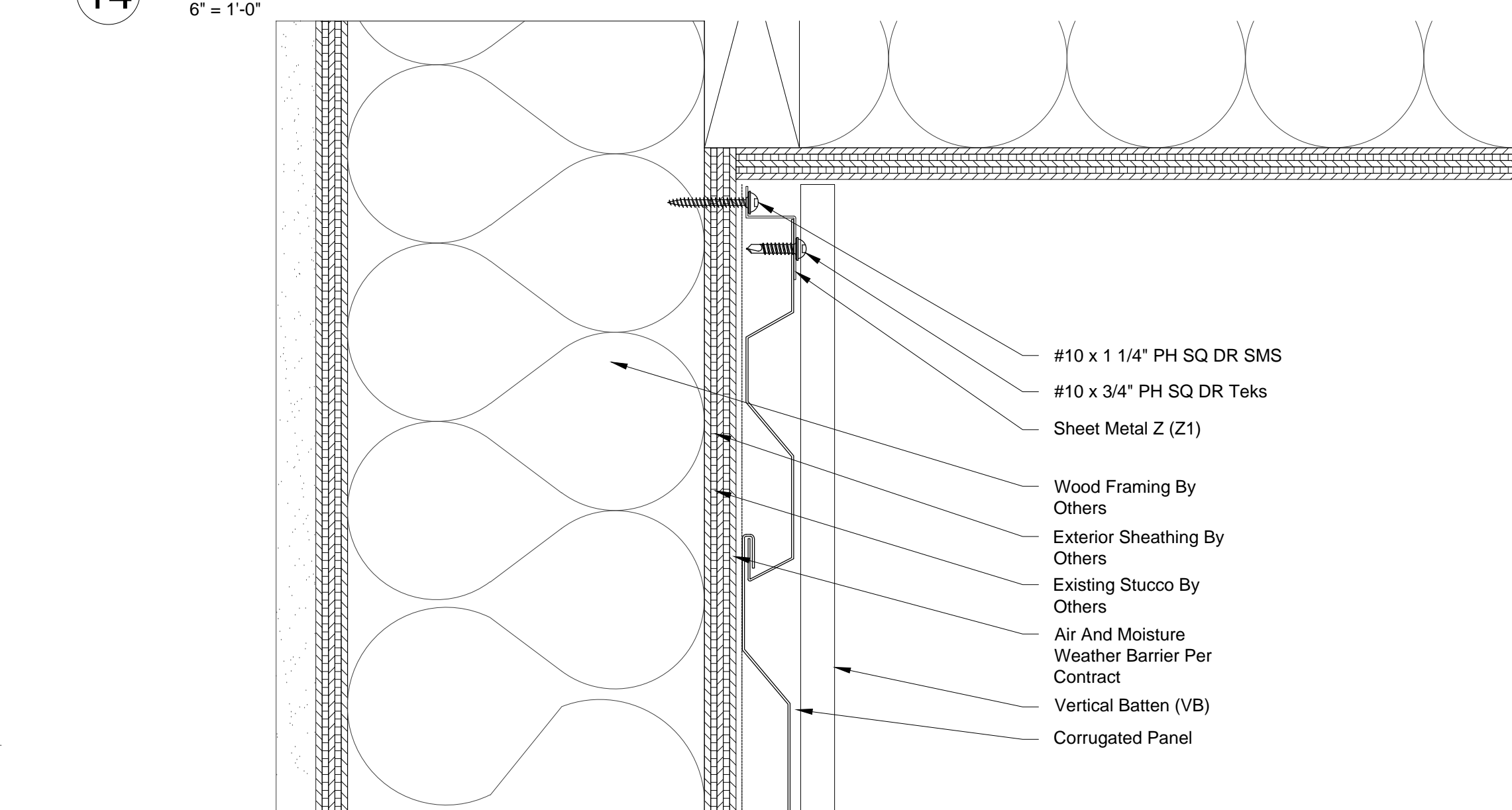
14 Corrugated @ Parapet End Cap - Wood Framing  
6" = 1'-0"



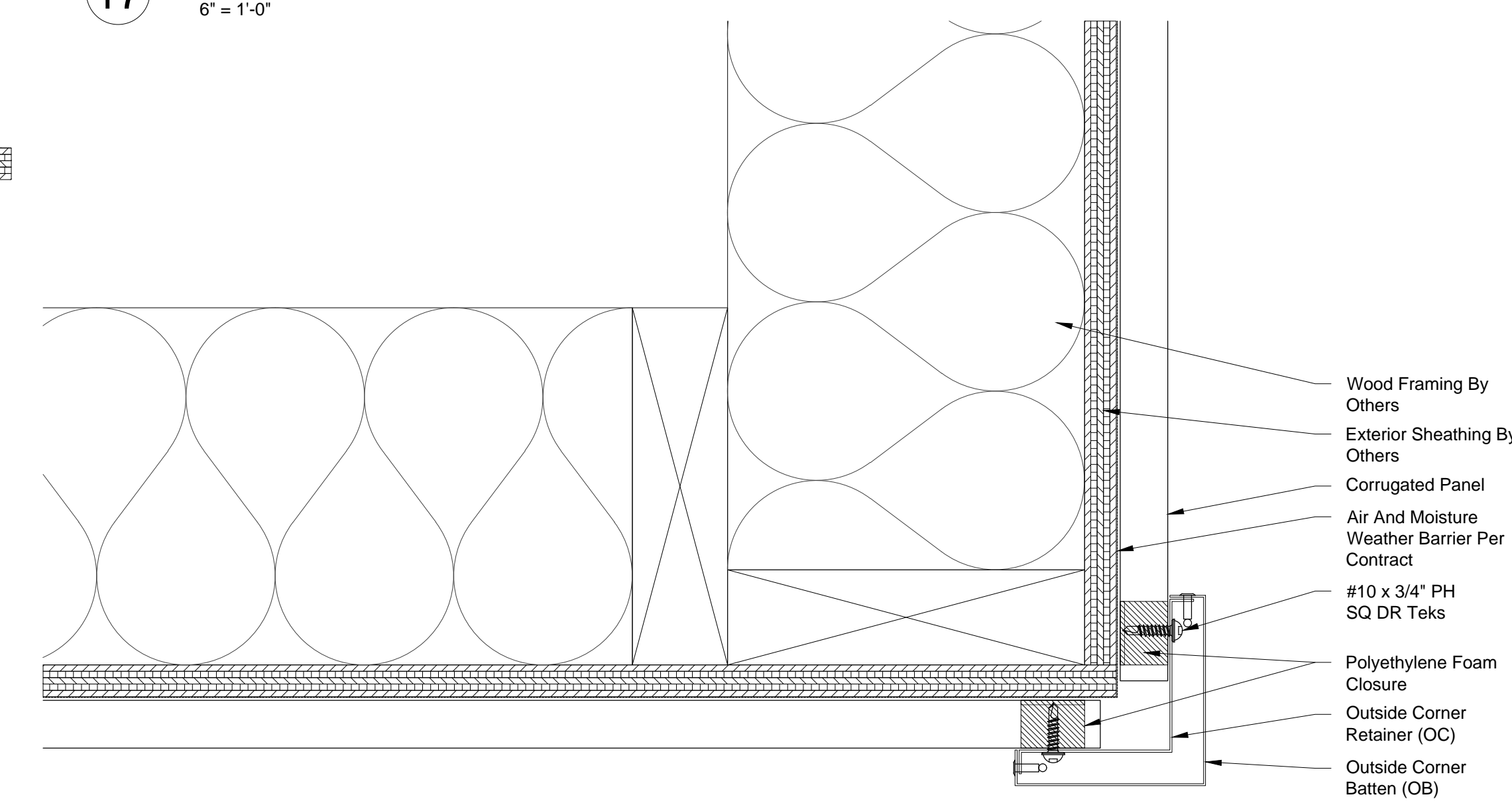
17 Corrugated @ Termination - Wood Framing  
6" = 1'-0"



12 Corrugated @ Base Condition - Wood Framing  
6" = 1'-0"



15 Corrugated @ Soffit Termination - Wood Framing  
6" = 1'-0"



18 Corrugated @ Outside Corner - Wood Framing  
6" = 1'-0"

**Standard Corrugated Wood Framing Details**

IF YOU ARE INTERESTED IN USING THESE DETAILS IN YOUR DESIGN SHEETS, PLEASE CONTACT BESTWORTHROMMEL FOR ADDITIONAL CAD DRAWINGS, OR FURTHER INFORMATION REGARDING OUR PANEL SYSTEMS.



**BESTWORTHROMMEL**  
 19818 74TH Ave. N.E.  
 Arlington, WA 98223  
 360.435.2927 PHONE - 360.435.3617 FAX  
 www.bestworth.com