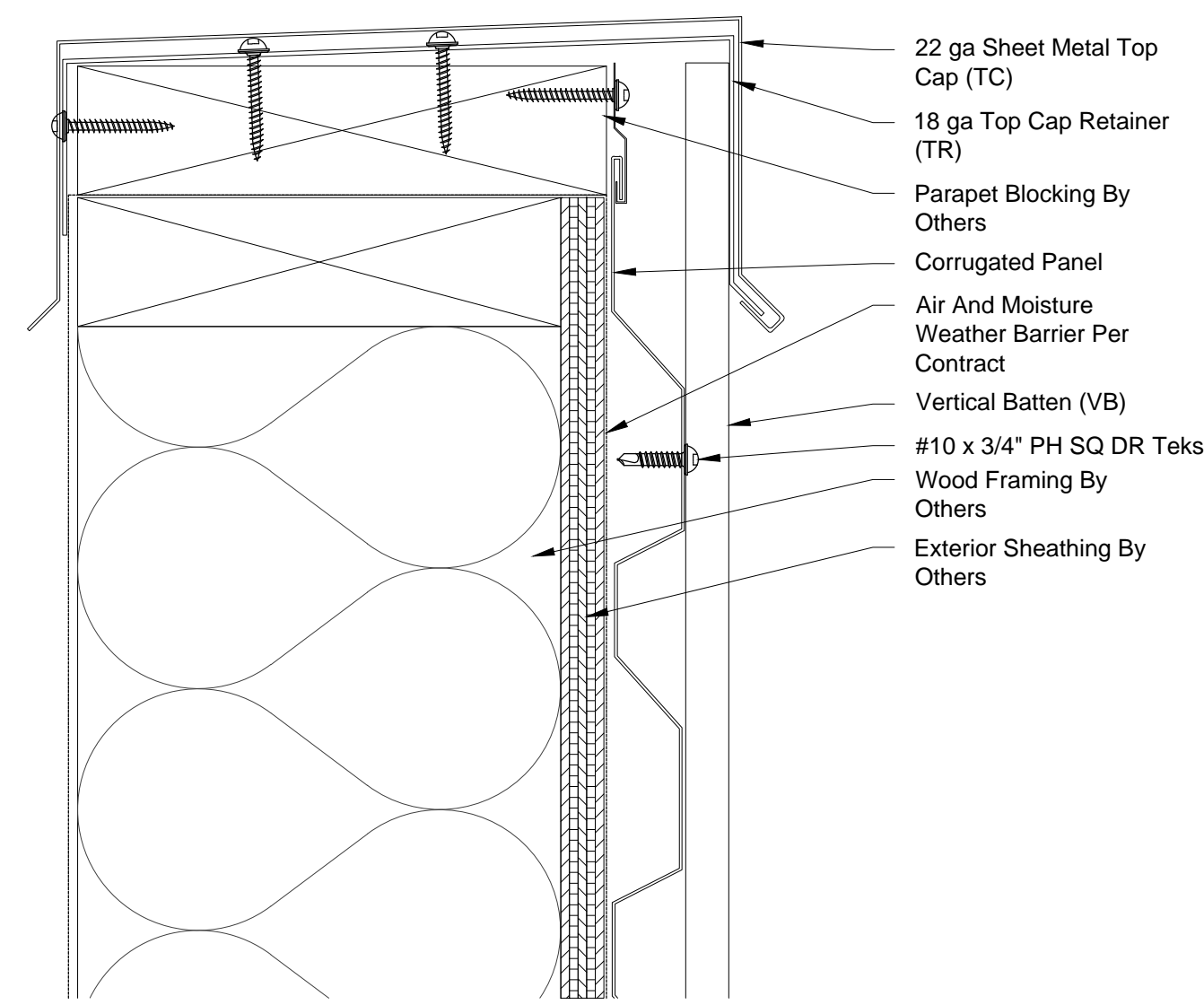
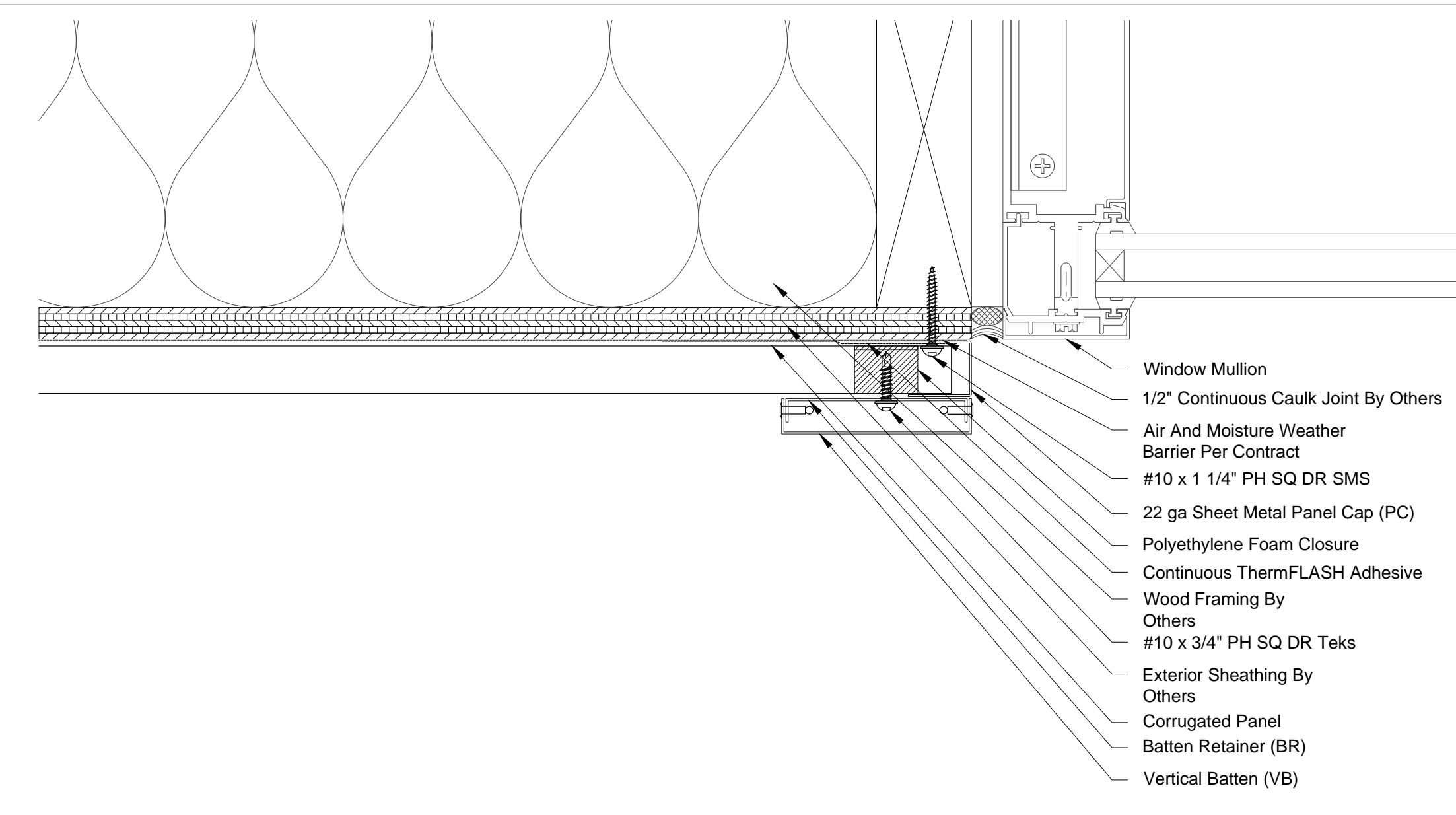


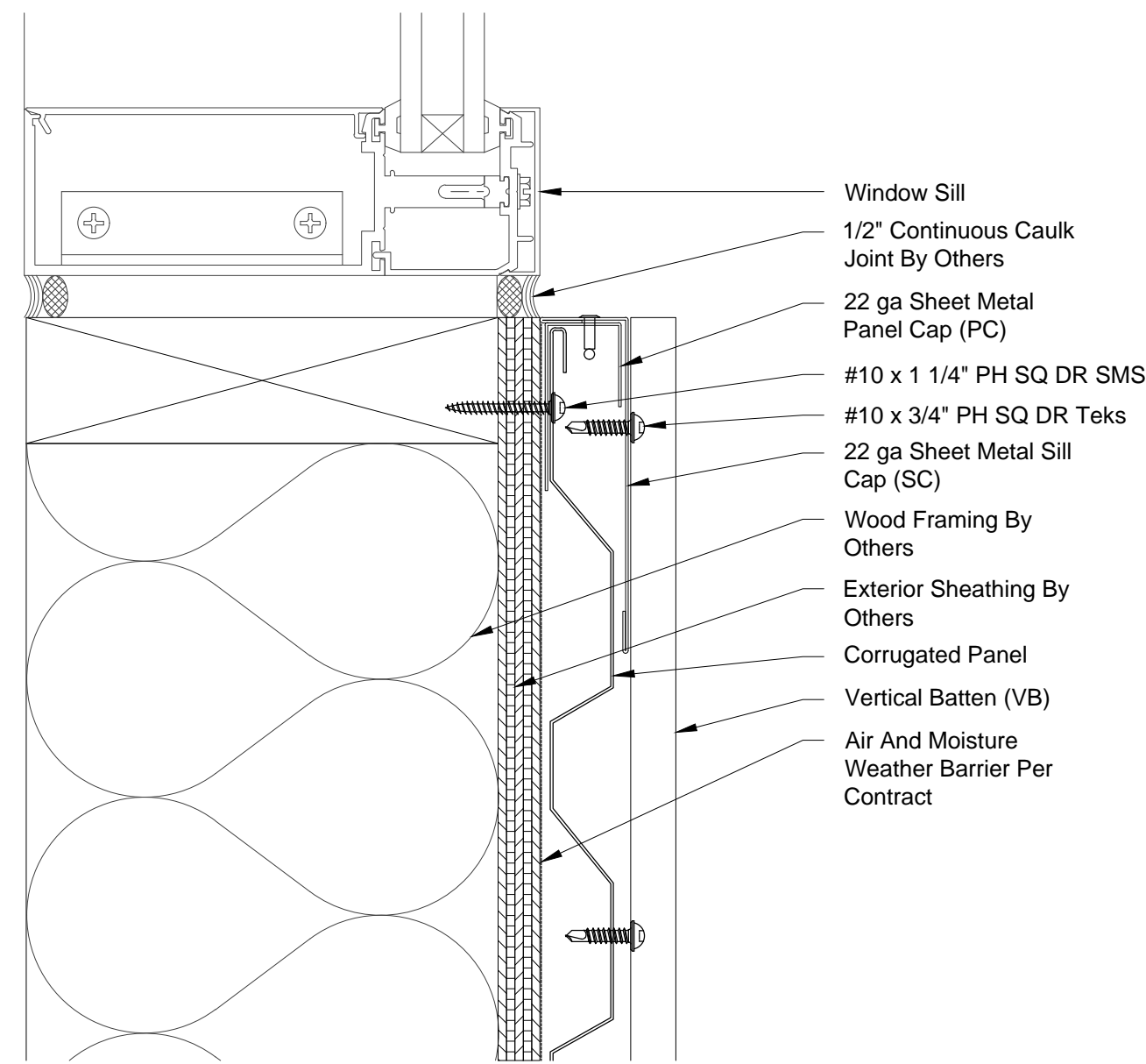
01 Corrugated @ Window Header - Wood Framing
6" = 1'-0"



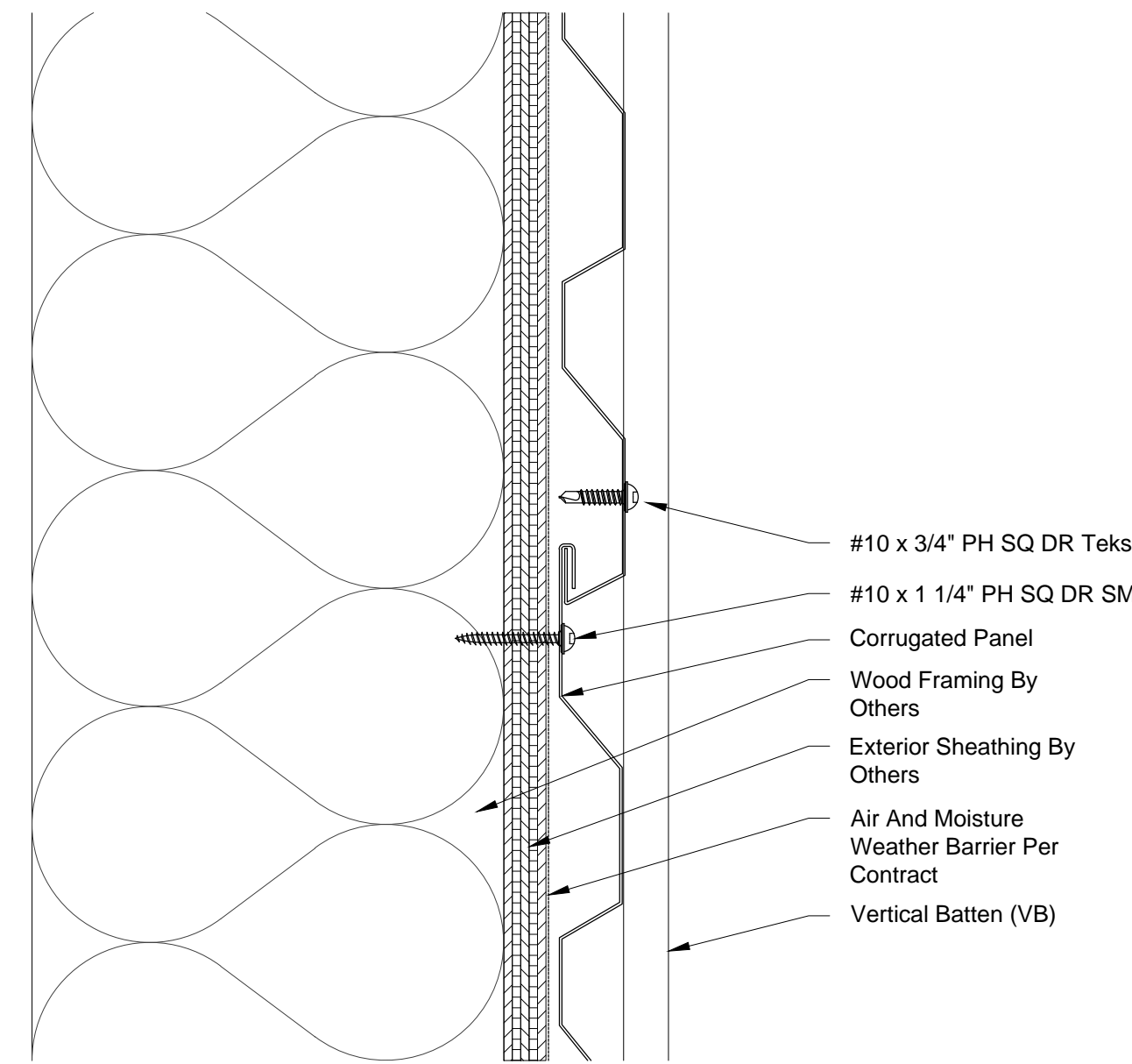
04 Corrugated @ Sheet Metal Top Cap - Wood Framing
6" = 1'-0"



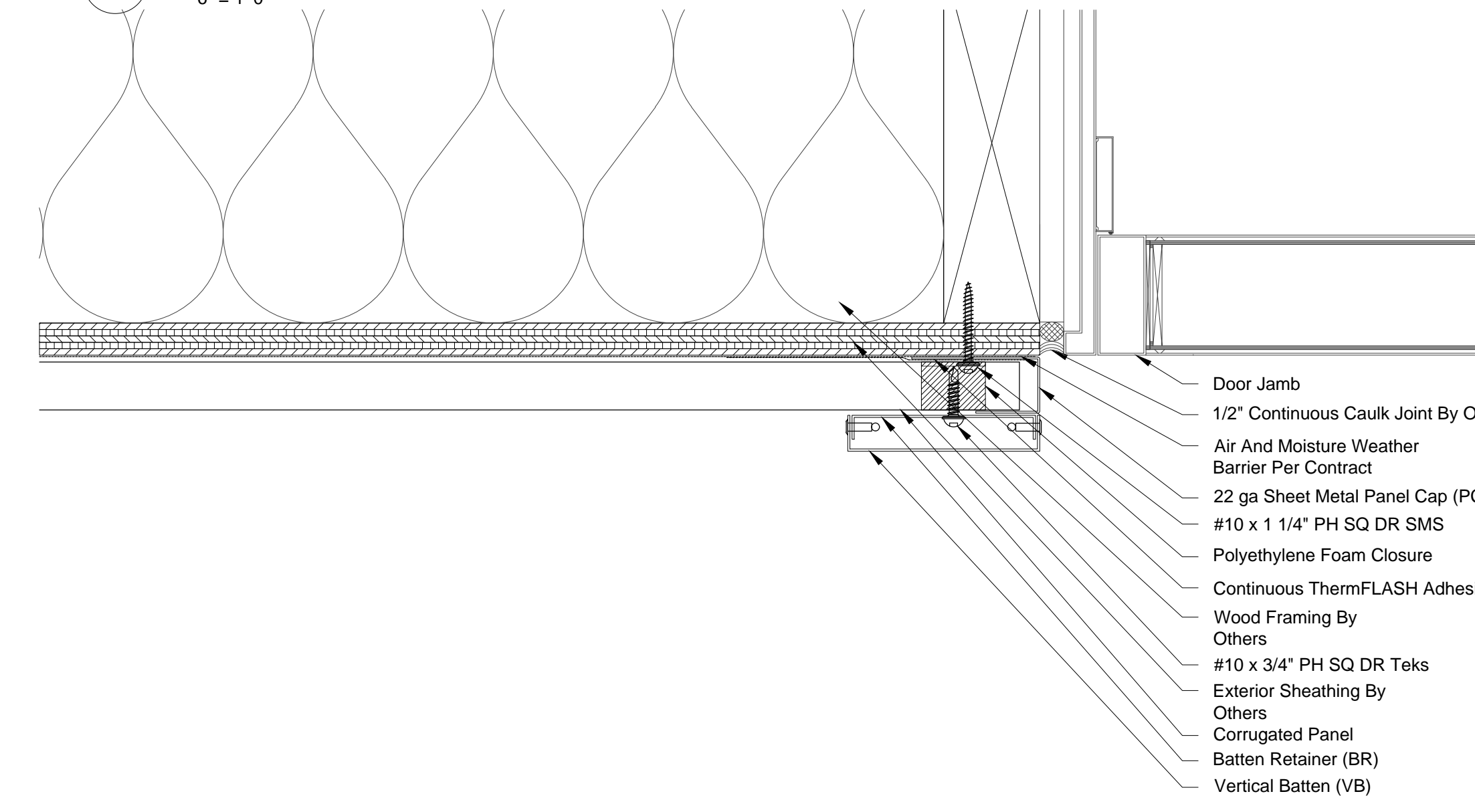
07 Corrugated @ Window Mullion - Wood Framing
6" = 1'-0"



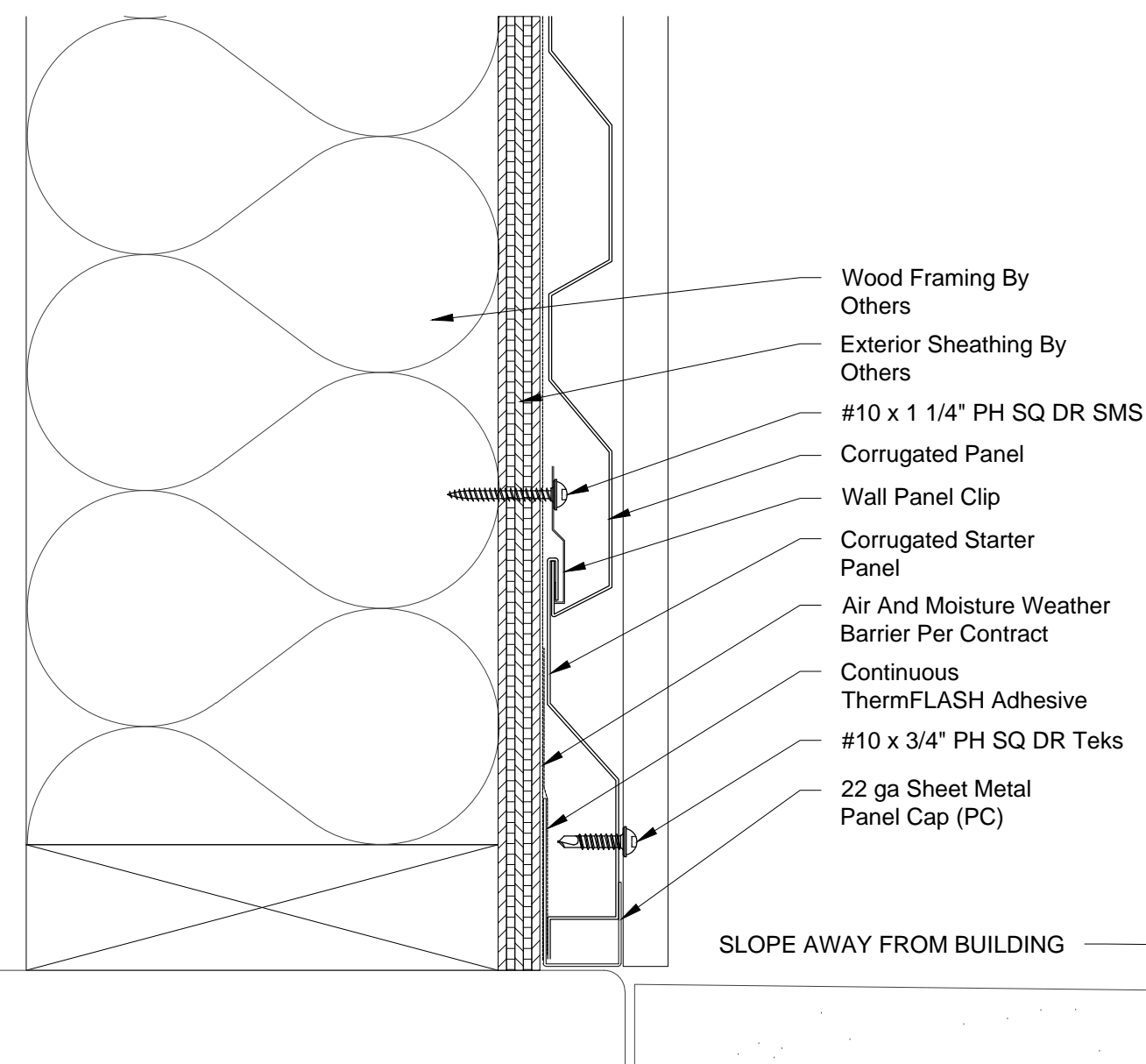
02 Corrugated @ Window Sill - Wood Framing
6" = 1'-0"



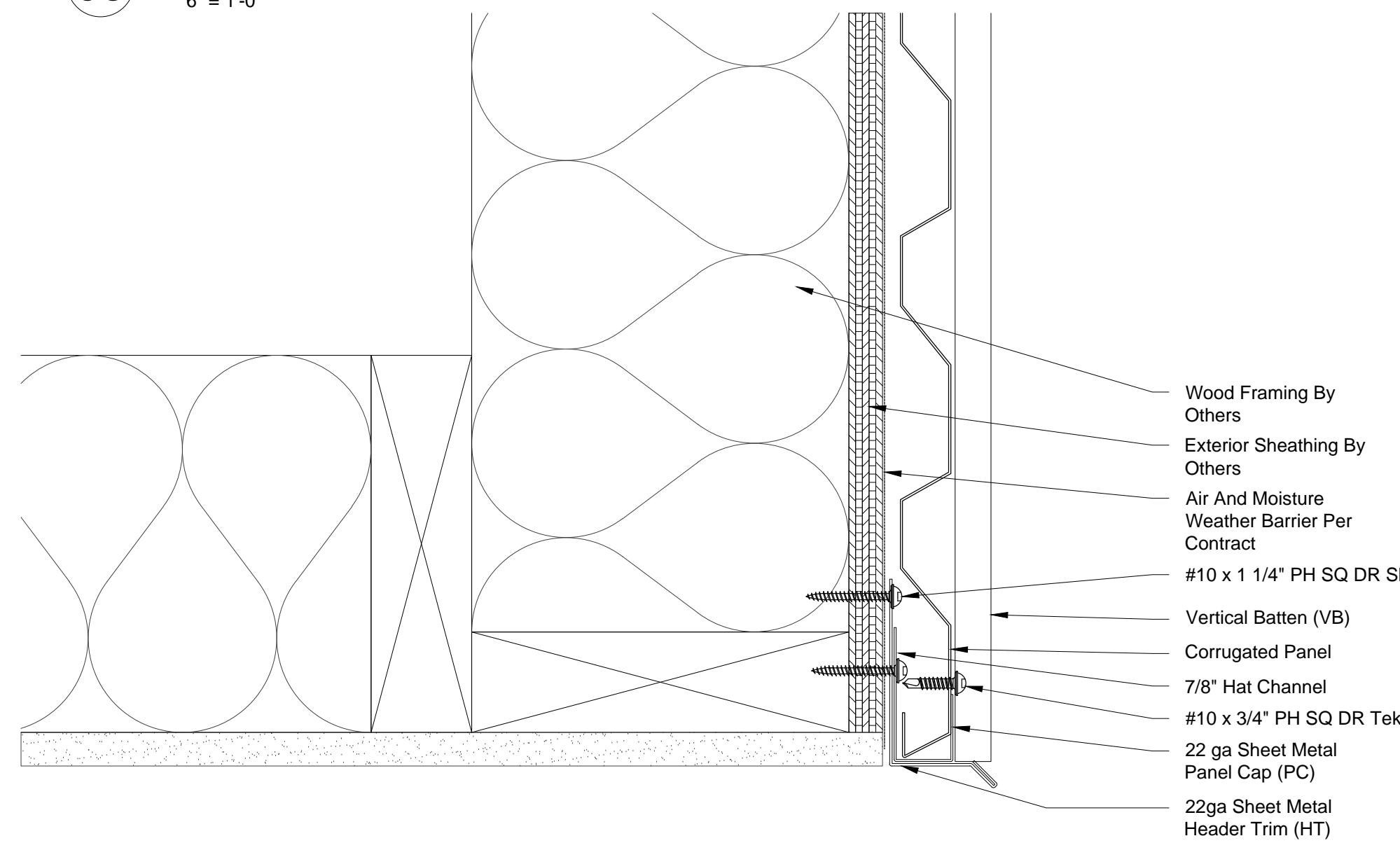
05 Corrugated @ Panel Joint - Wood Framing
6" = 1'-0"



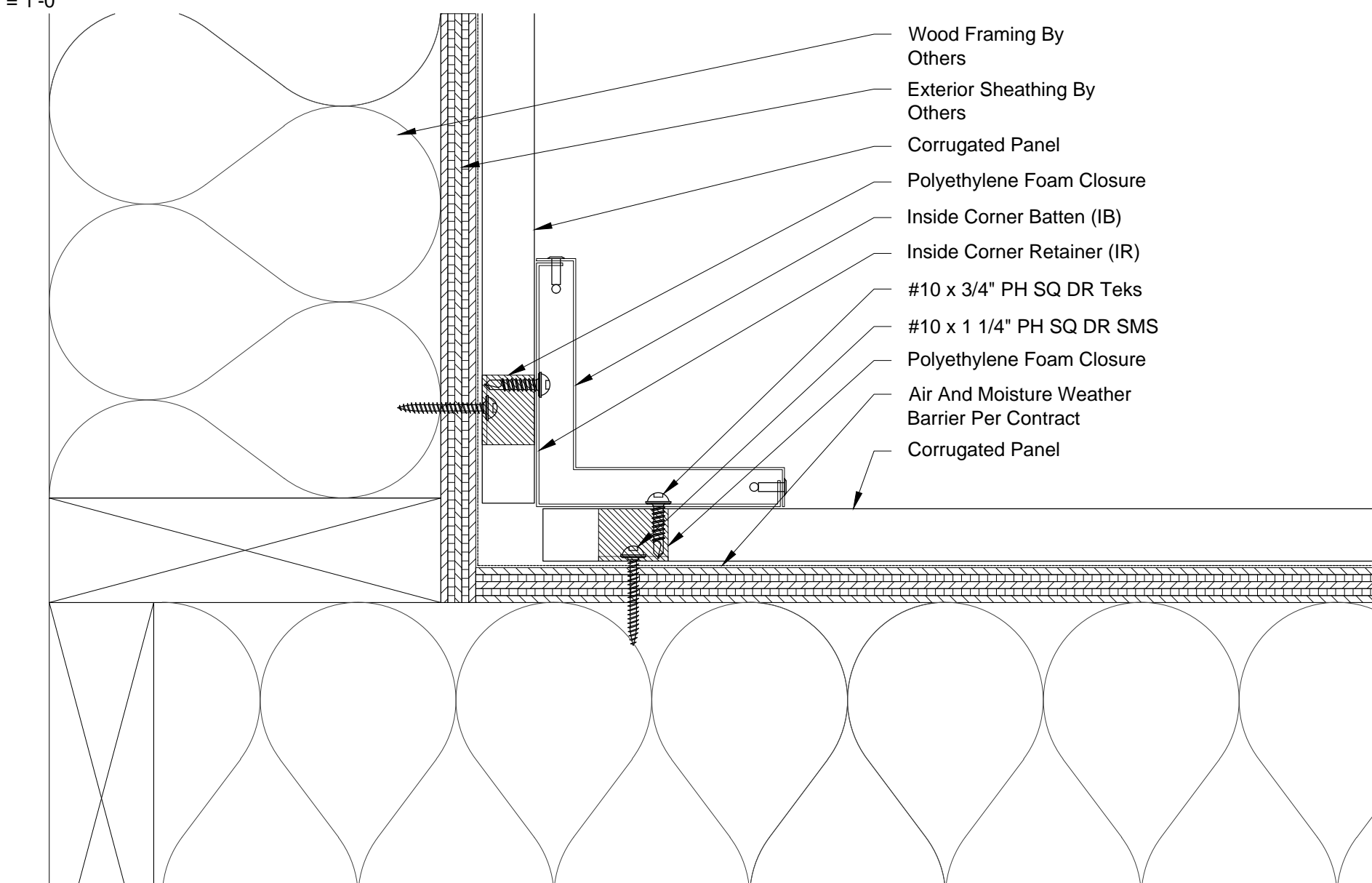
08 Corrugated @ Door Jamb - Wood Framing
6" = 1'-0"



03 Corrugated @ Base Condition - Wood Framing
6" = 1'-0"



06 Corrugated @ Soffit Termination - Wood Framing
6" = 1'-0"



09 Corrugated @ Inside Corner - Wood Framing
6" = 1'-0"

Standard Corrugated Wood Framing Details

IF YOU ARE INTERESTED IN USING THESE DETAILS IN YOUR DESIGN SHEETS, PLEASE CONTACT BESTWORTHROMMEL FOR ADDITIONAL CAD DRAWINGS, OR FURTHER INFORMATION REGARDING OUR PANEL SYSTEMS.



BESTWORTHROMMEL
19818 74TH Ave. N.E.
Arlington, WA 98223

360.435.2927 PHONE - 360.435.3617 FAX
www.bestworth.com