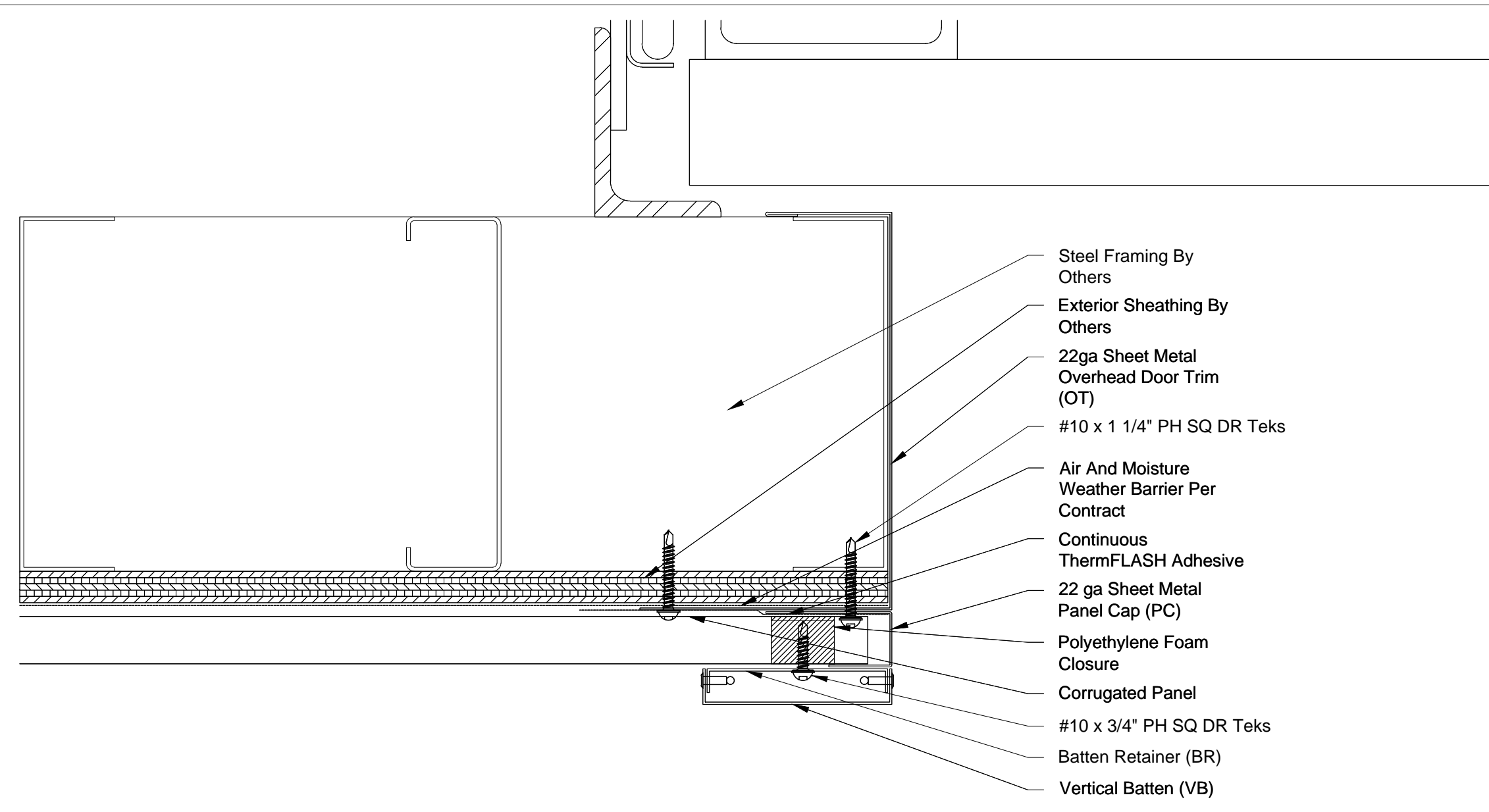
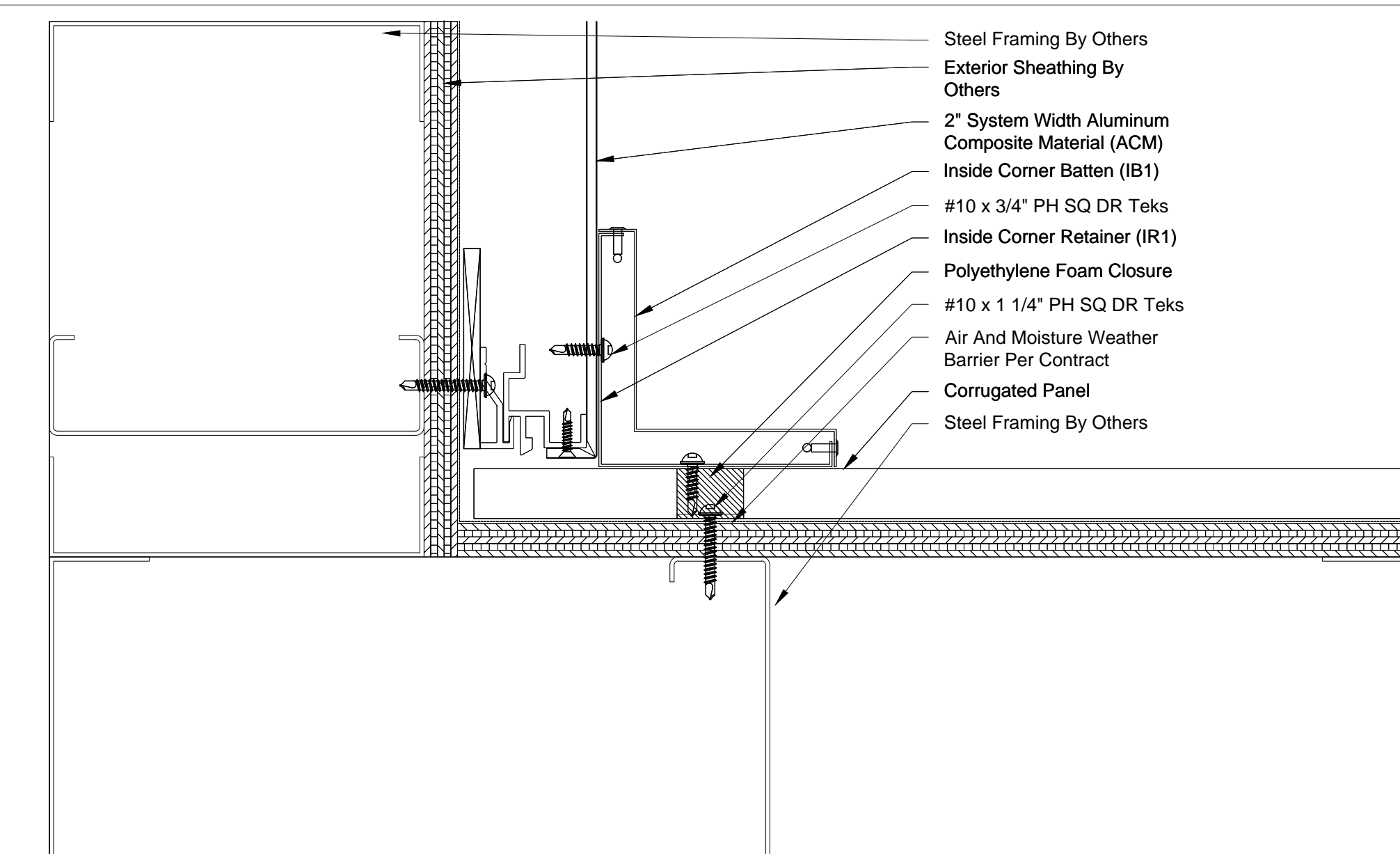


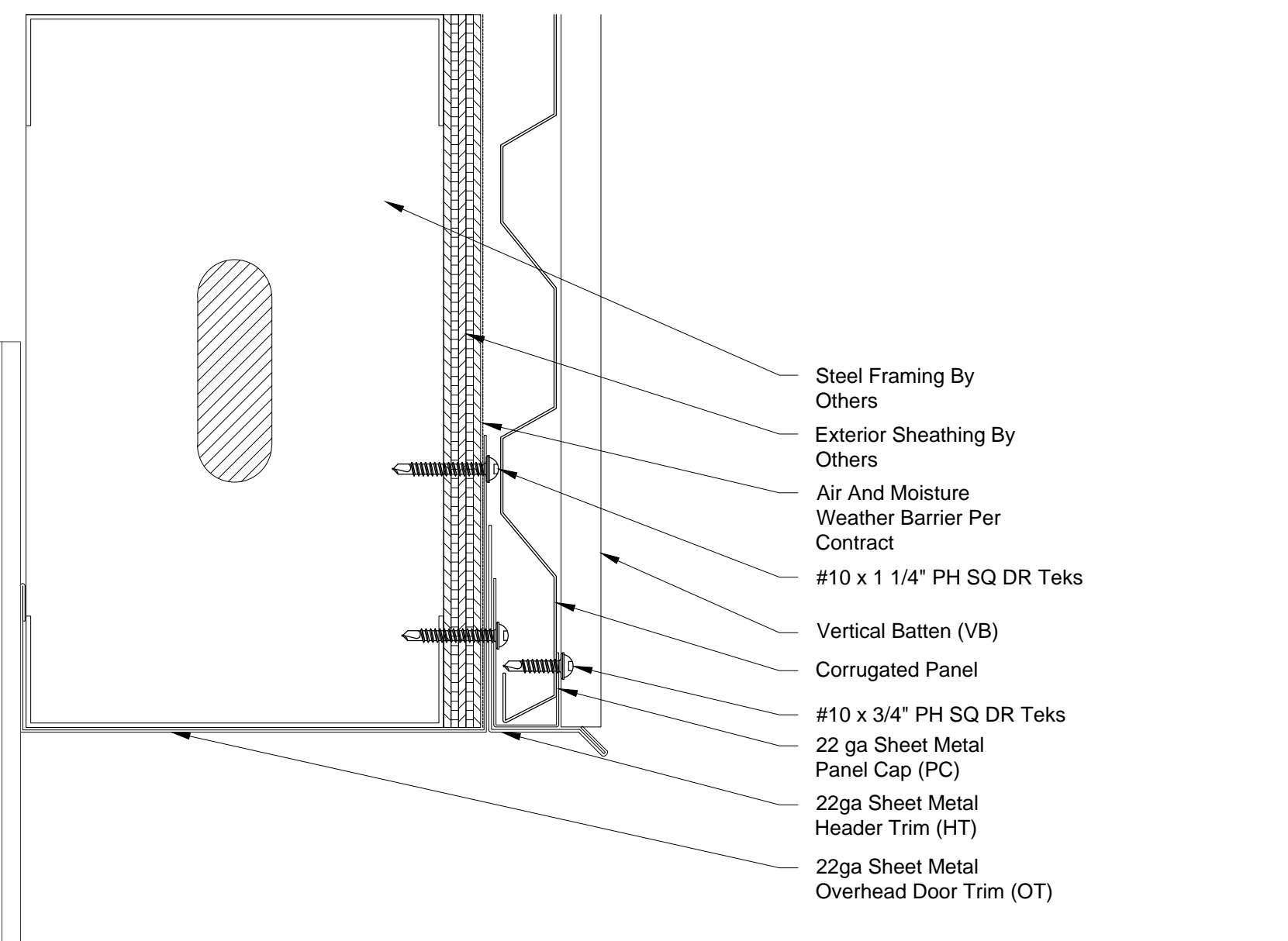
10 Corrugated @ Door Header - Steel Framing
6" = 1'-0"



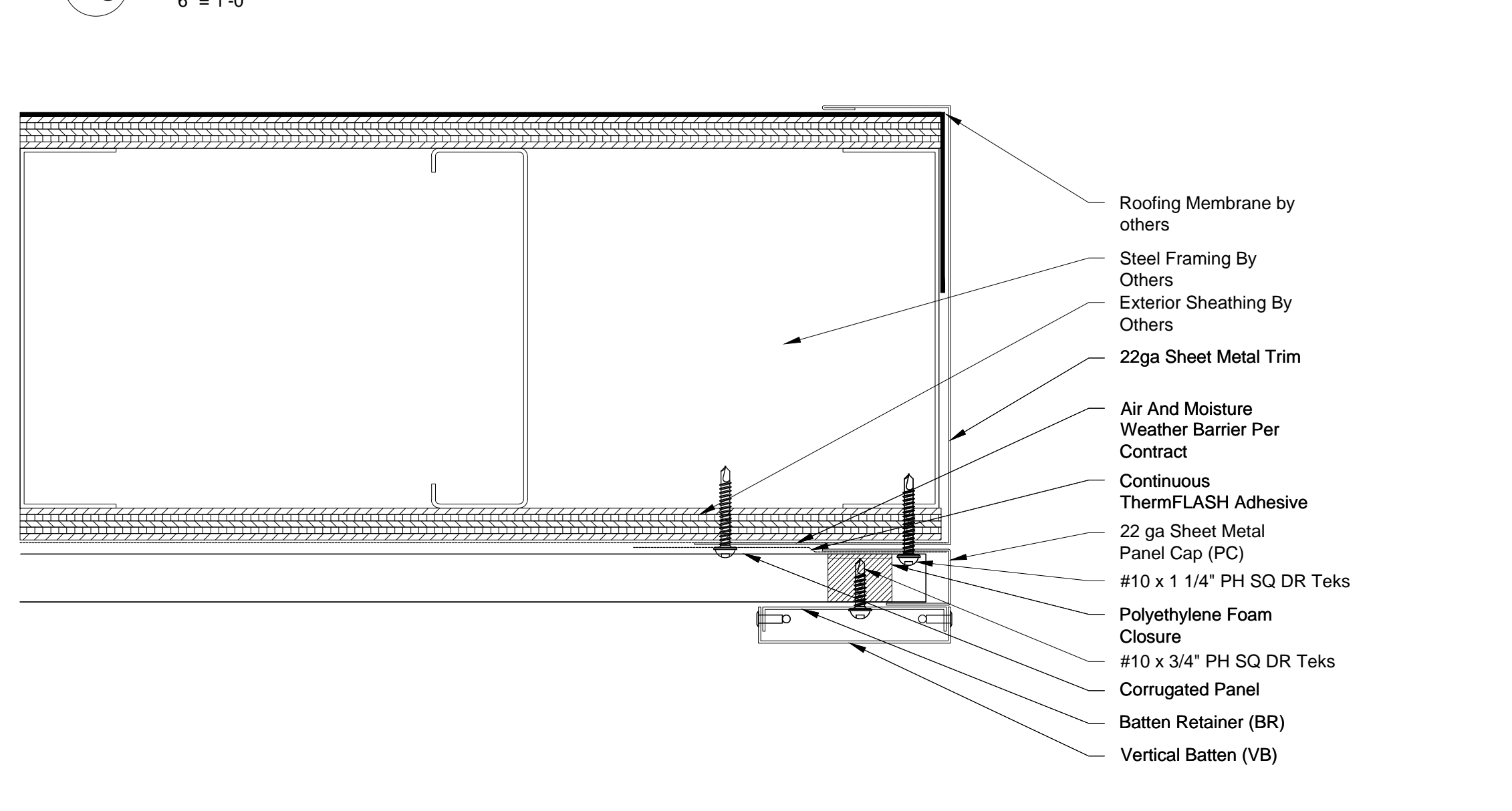
13 Corrugated @ Overhead Door Jamb - Steel Framing
6" = 1'-0"



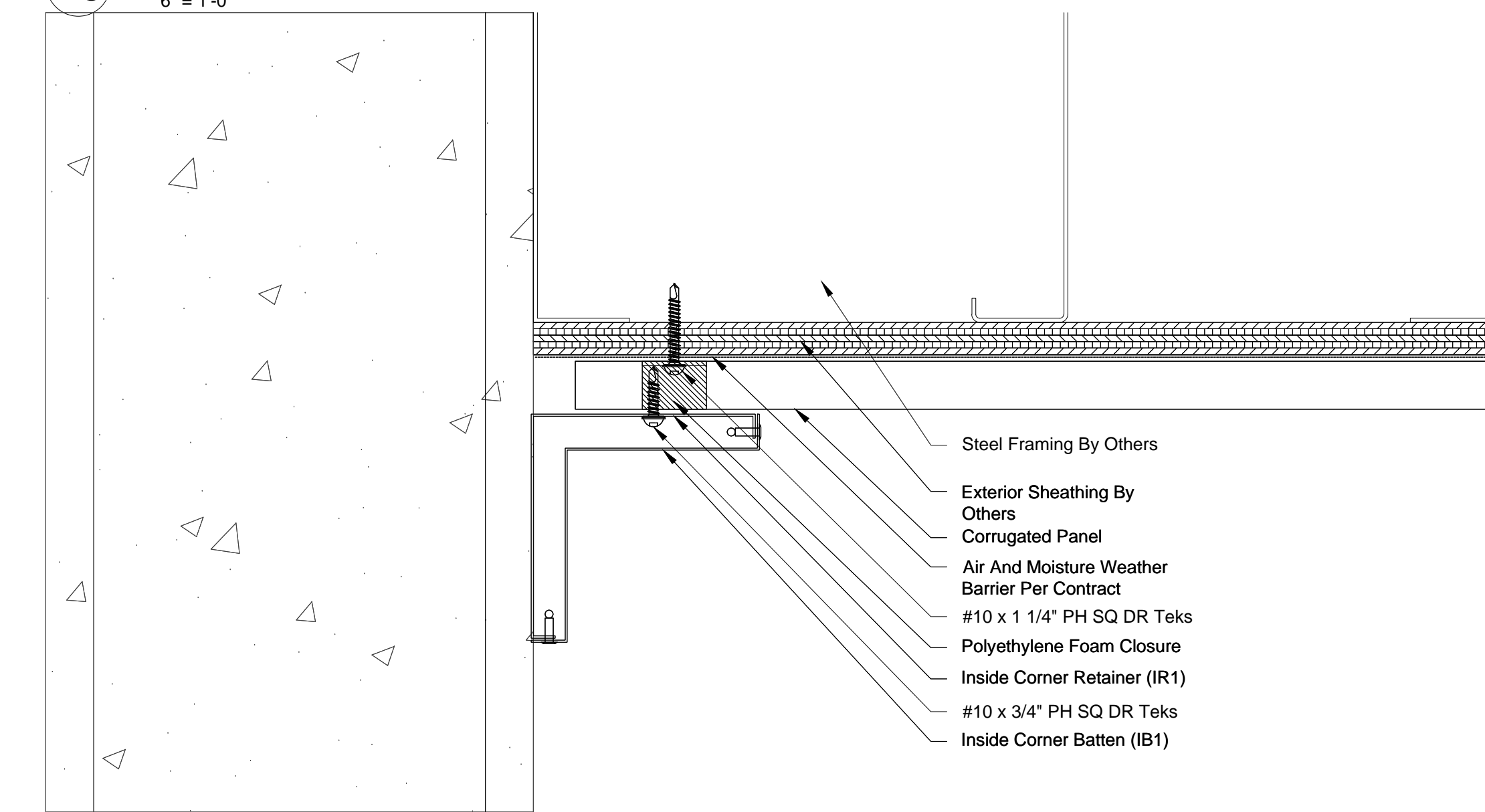
16 Corrugated @ Inside Corner to ACM - Steel Framing
6" = 1'-0"



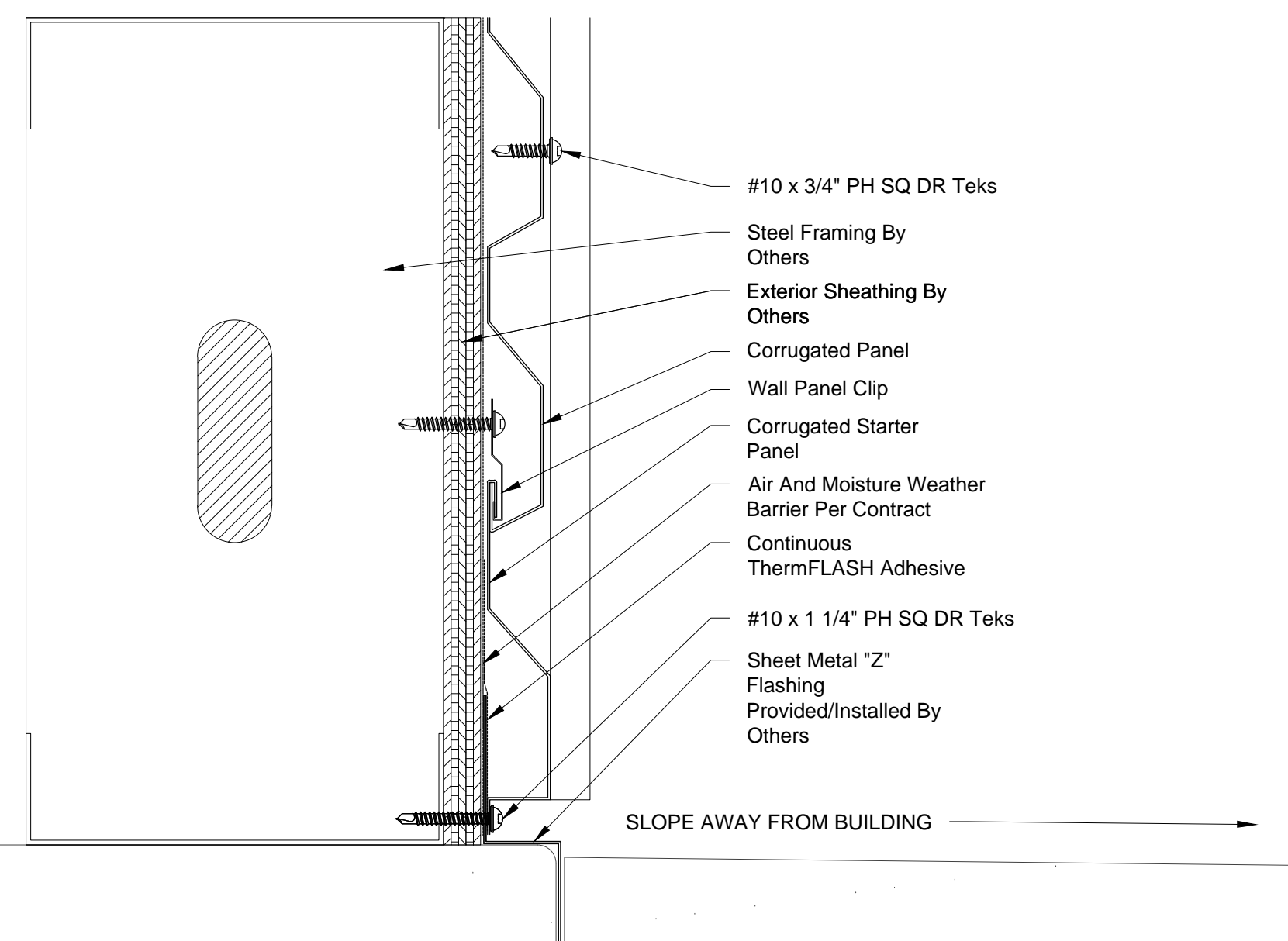
11 Corrugated @ Overhead Door Header - Steel Framing
6" = 1'-0"



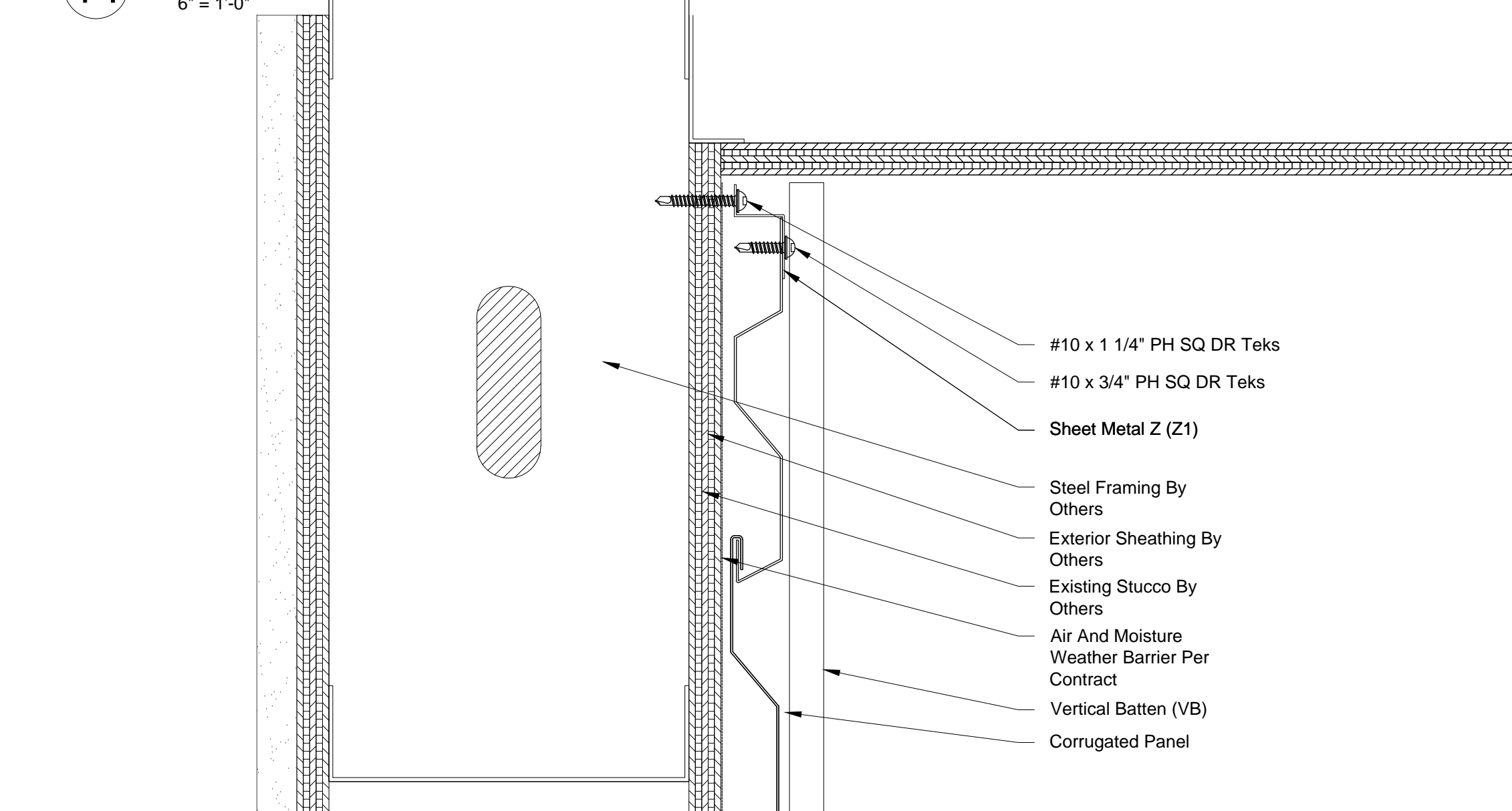
14 Corrugated @ Parapet End Cap - Steel Framing
6" = 1'-0"



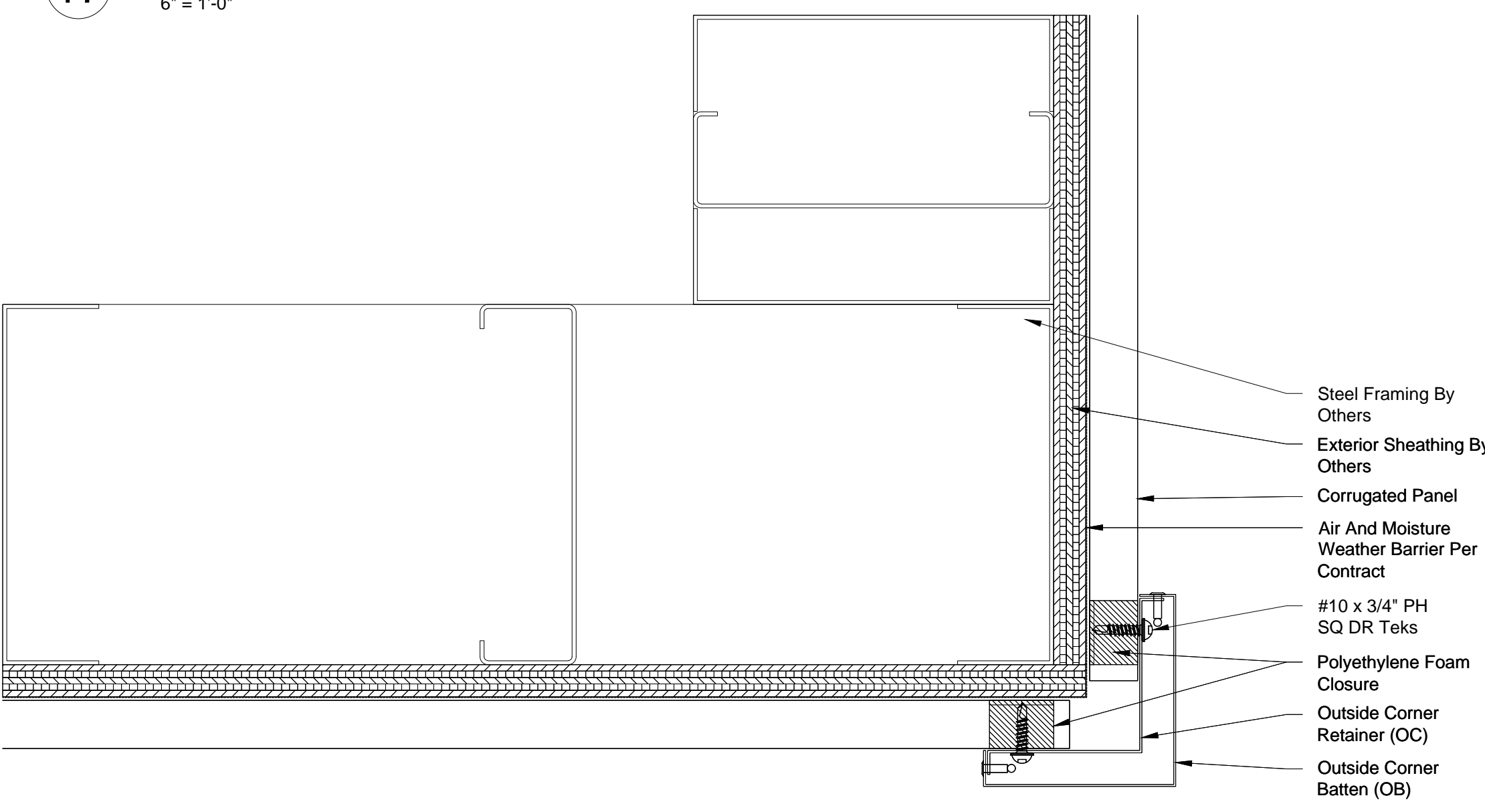
17 Corrugated @ Termination - Steel Framing
6" = 1'-0"



12 Corrugated @ Base Condition - Steel Framing
6" = 1'-0"



15 Corrugated @ Soffit Termination - Steel Framing
6" = 1'-0"



18 Corrugated @ Outside Corner - Steel Framing
6" = 1'-0"

Standard Corrugated Steel Framing Details

IF YOU ARE INTERESTED IN USING THESE DETAILS IN YOUR DESIGN SHEETS, PLEASE CONTACT BESTWORTHROMMEL FOR ADDITIONAL CAD DRAWINGS, OR FURTHER INFORMATION REGARDING OUR PANEL SYSTEMS.



BESTWORTHROMMEL
19818 74TH Ave. N.E.
Arlington, WA 98223

360.435.2927 PHONE - 360.435.3617 FAX
www.bestworth.com