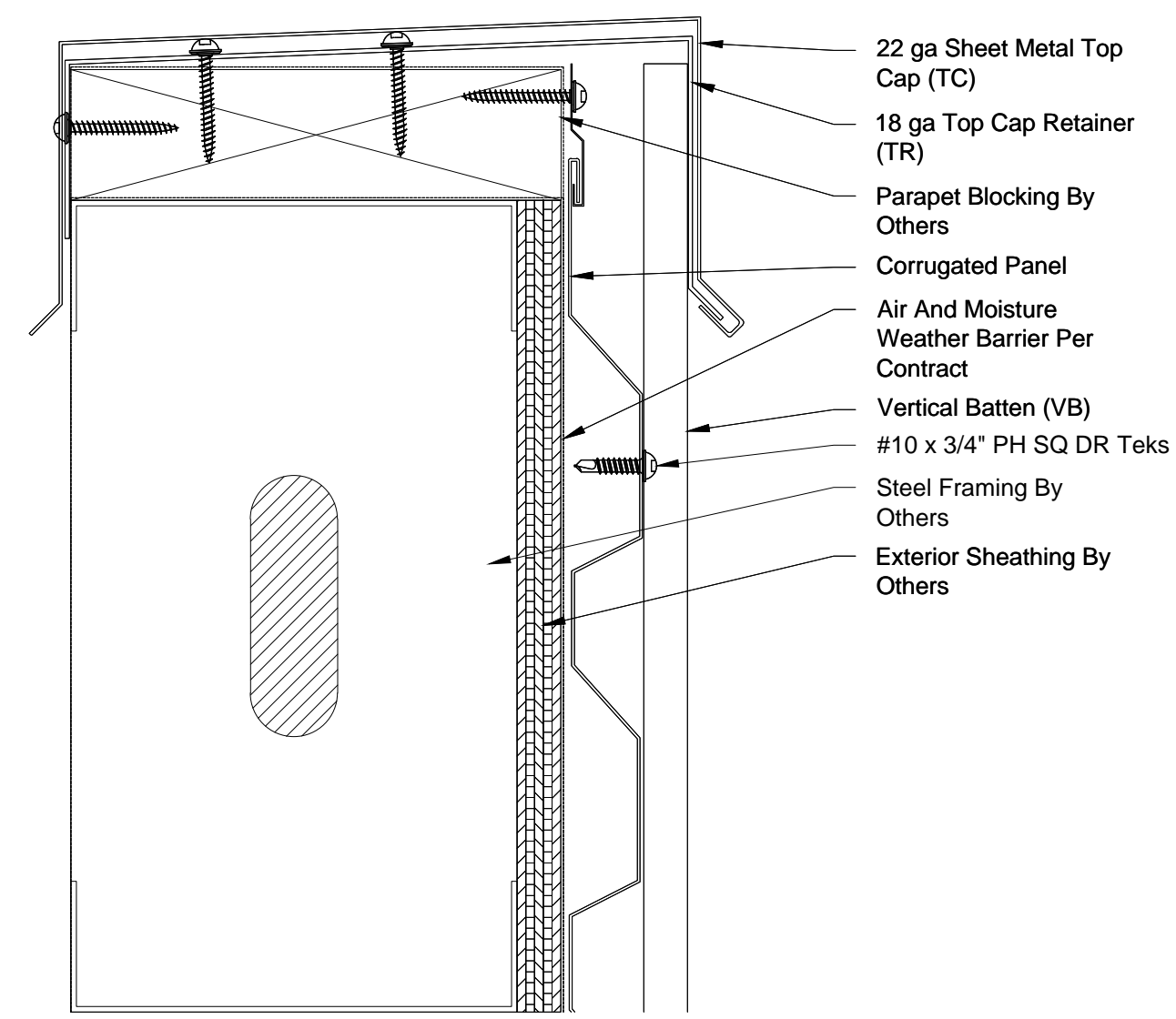
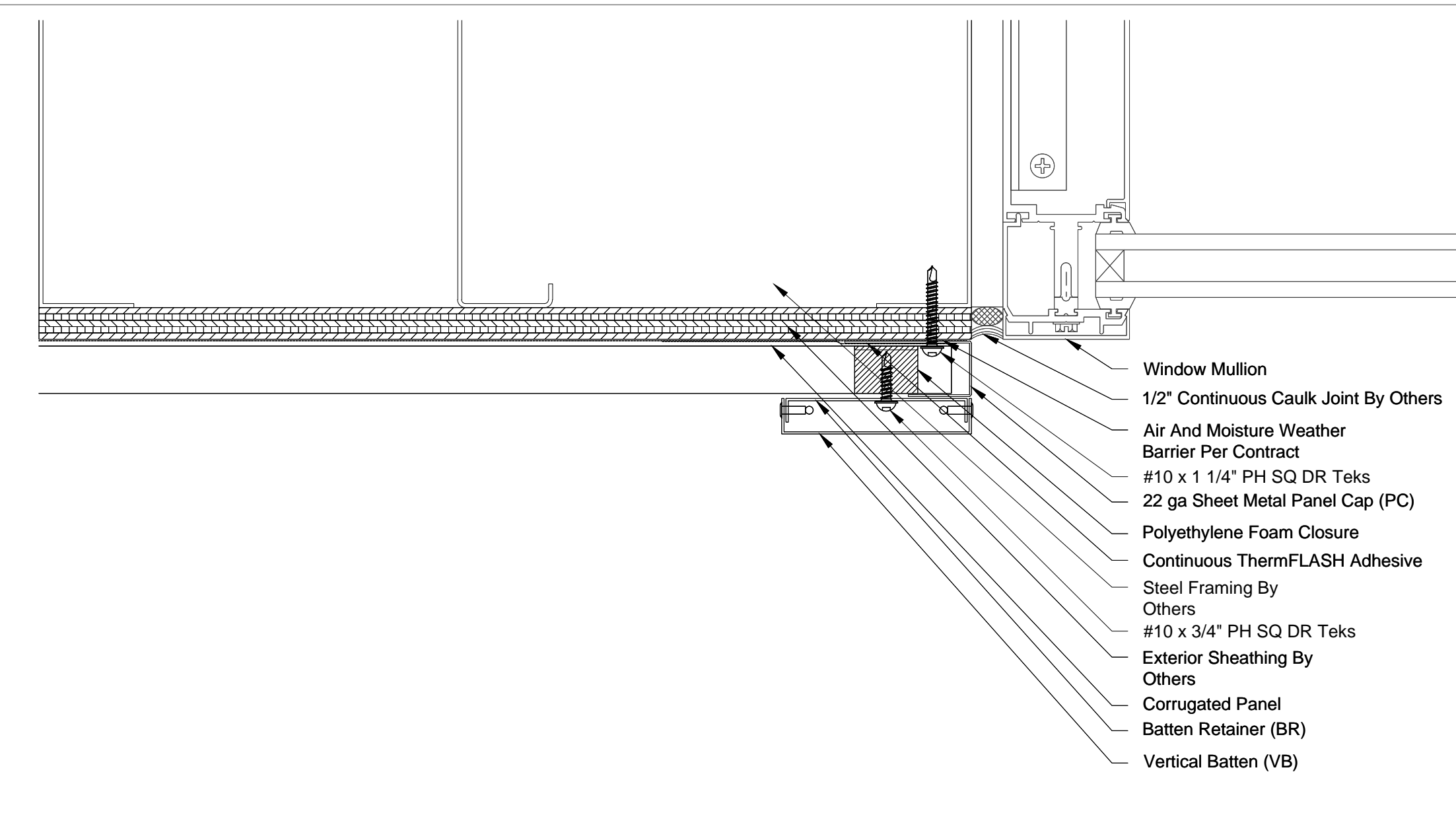


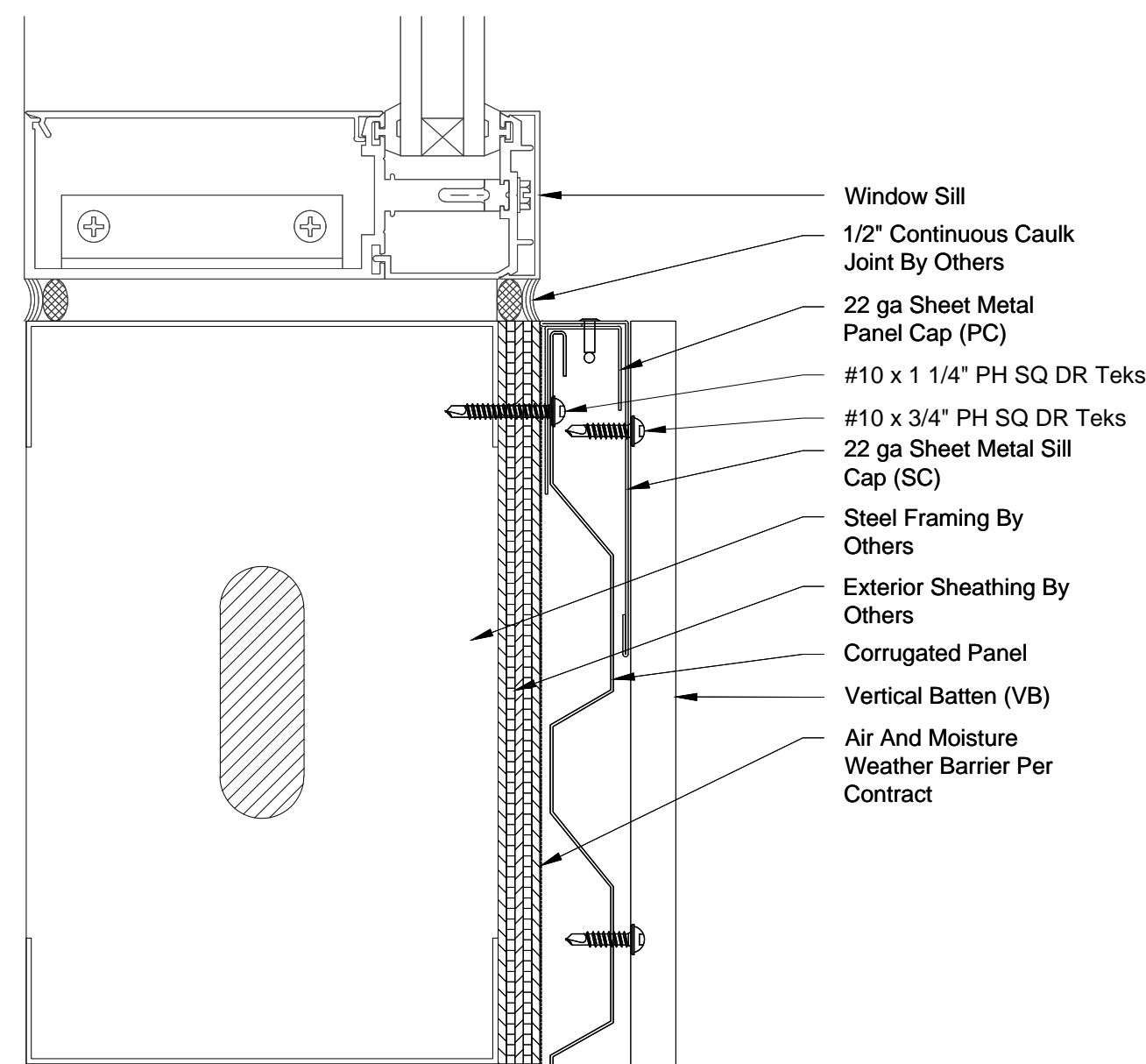
01 Corrugated @ Window Header - Steel Framing
6" = 1'-0"



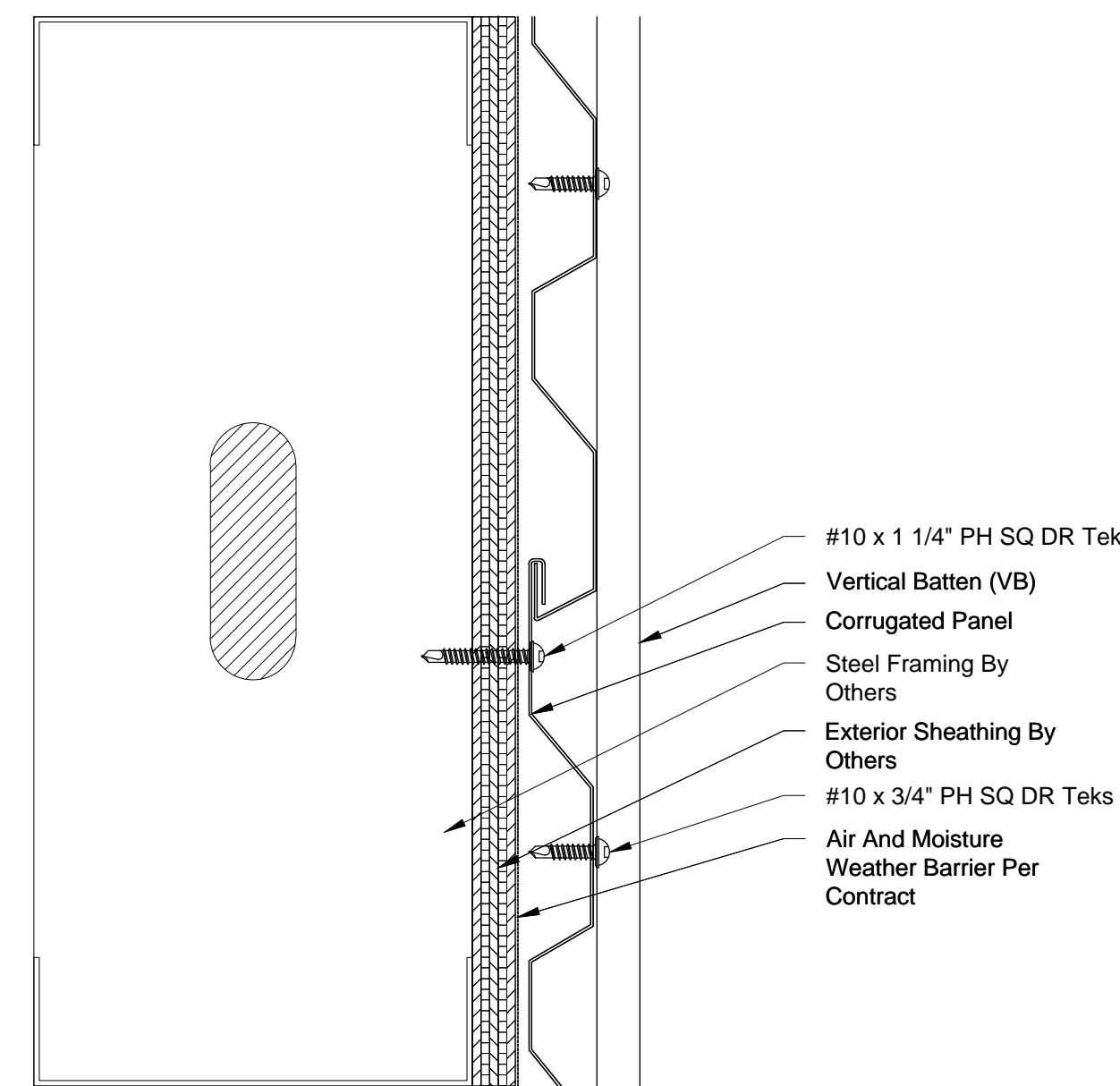
04 Corrugated @ Sheet Metal Top Cap - Steel Framing
6" = 1'-0"



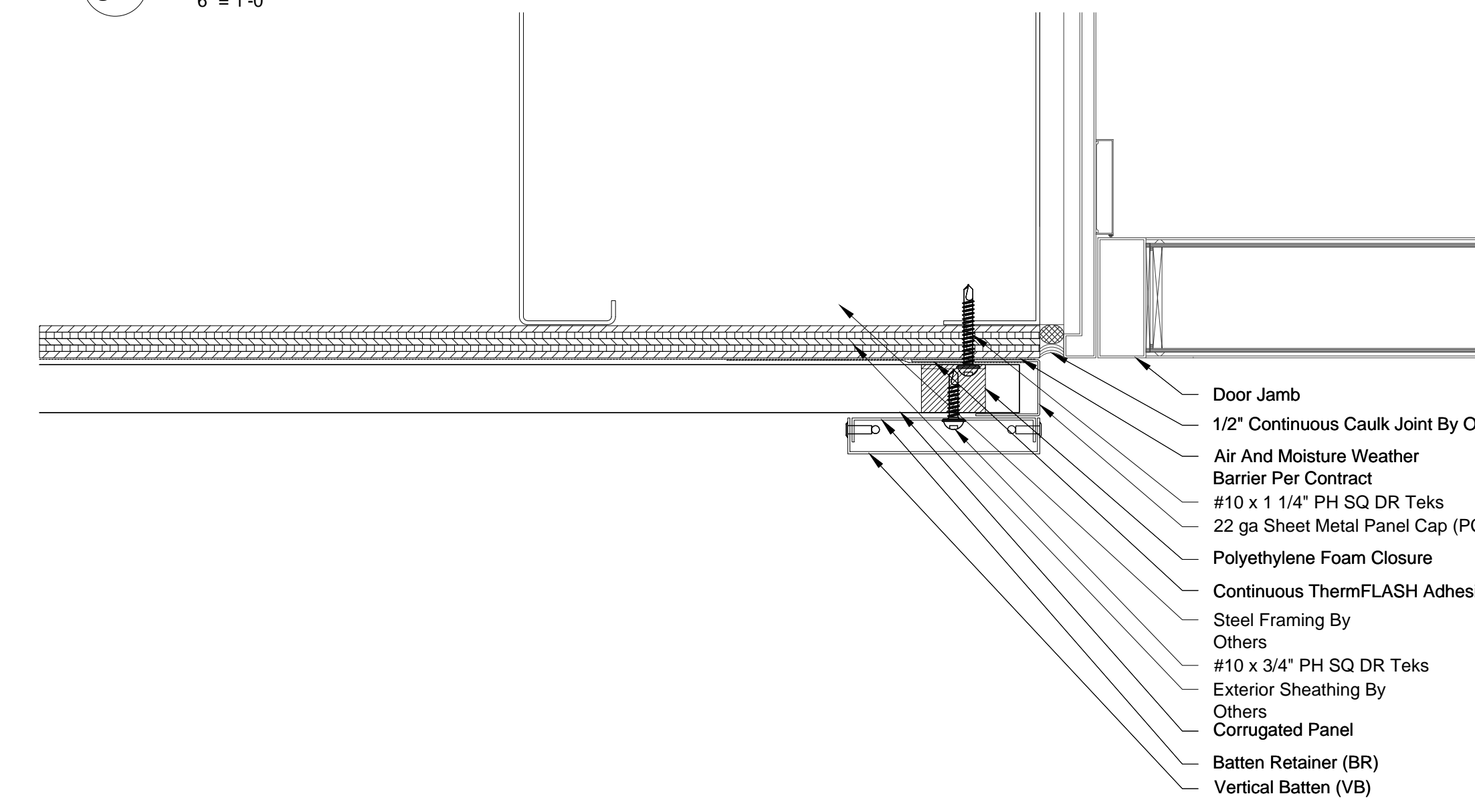
07 Corrugated @ Window Mullion - Steel Framing
6" = 1'-0"



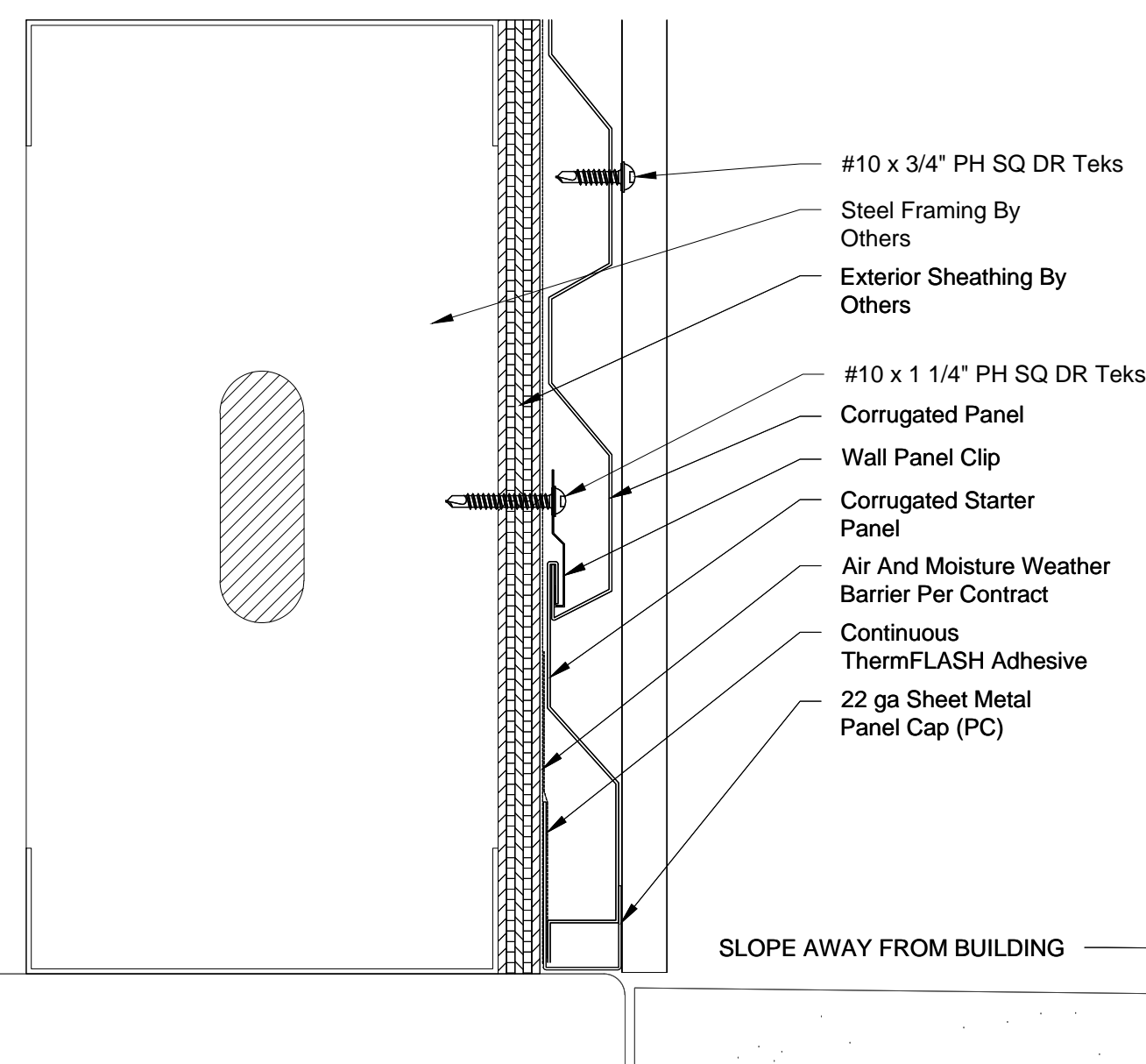
02 Corrugated @ Window Sill - Steel Framing
6" = 1'-0"



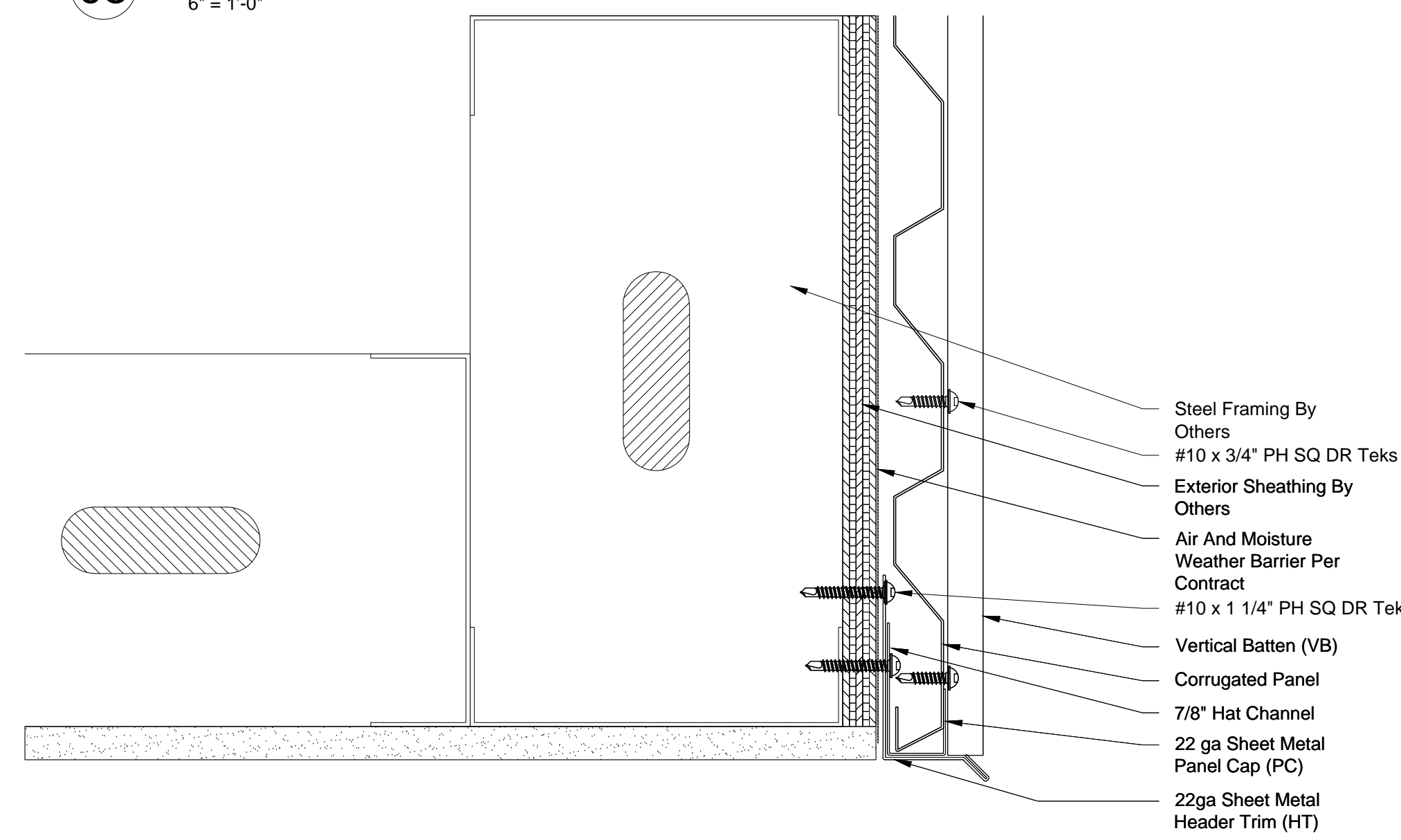
05 Corrugated @ Panel Joint - Steel Framing
6" = 1'-0"



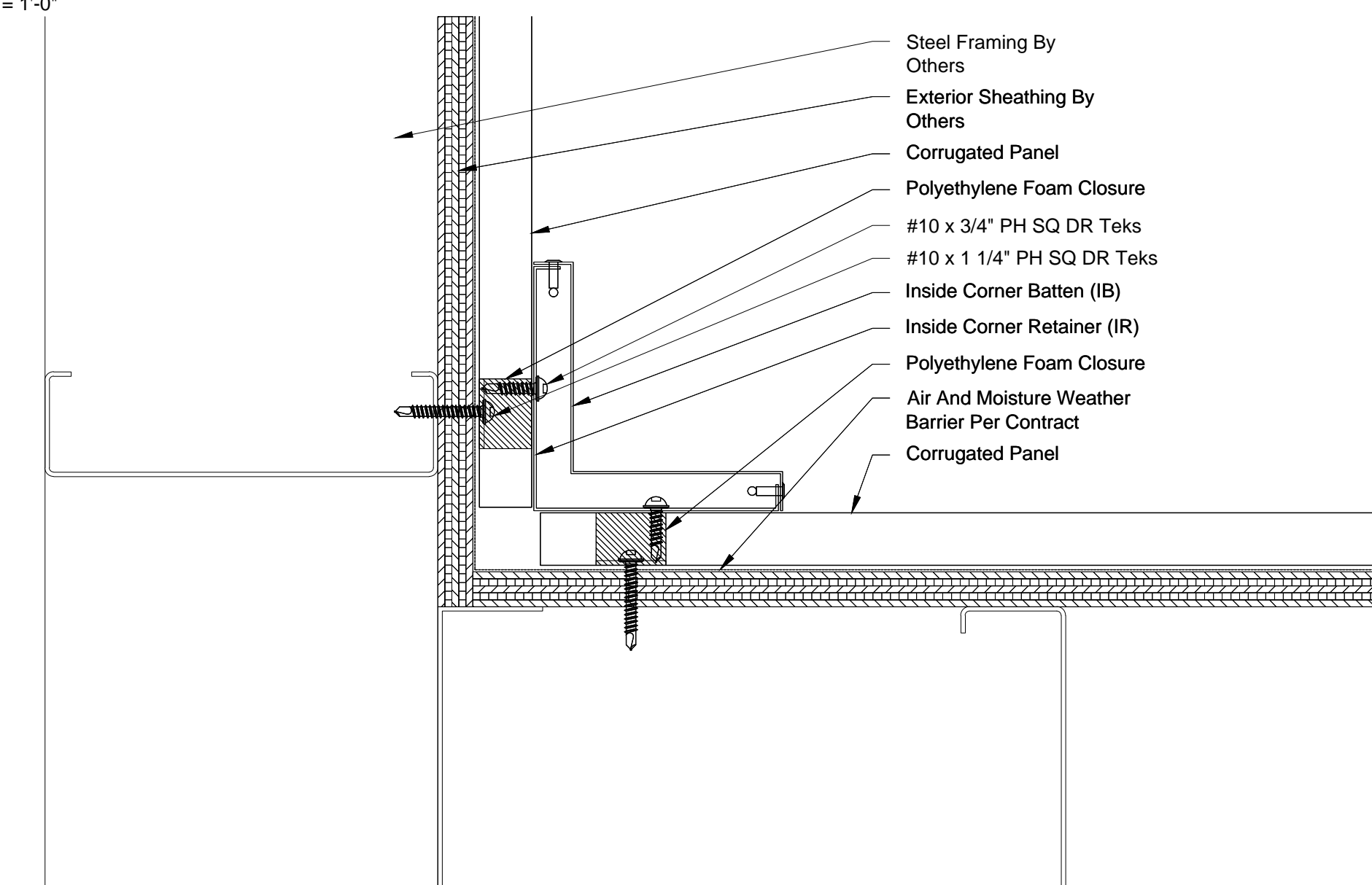
08 Corrugated @ Door Jamb - Steel Framing
6" = 1'-0"



03 Corrugated @ Base Condition - Steel Framing
6" = 1'-0"



06 Corrugated @ Soffit Termination - Steel Framing
6" = 1'-0"



09 Corrugated @ Inside Corner - Steel Framing
6" = 1'-0"

Standard Corrugated Steel Framing Details

IF YOU ARE INTERESTED IN USING THESE DETAILS IN YOUR DESIGN SHEETS, PLEASE CONTACT BESTWORTHROMMEL FOR ADDITIONAL CAD DRAWINGS, OR FURTHER INFORMATION REGARDING OUR PANEL SYSTEMS.



BESTWORTHROMMEL
19818 74TH Ave. N.E.
Arlington, WA 98223

360.435.2927 PHONE - 360.435.3617 FAX
www.bestworth.com