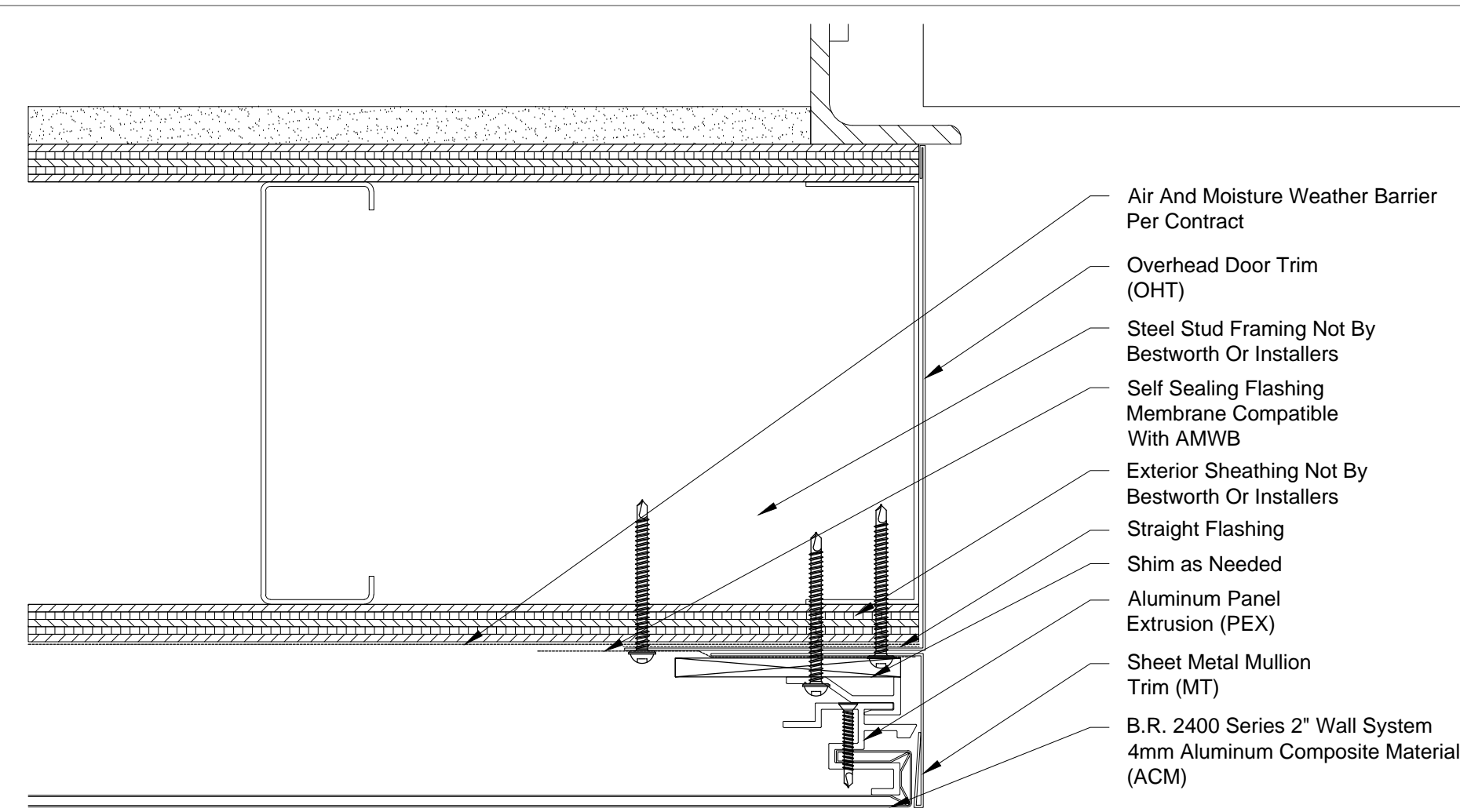
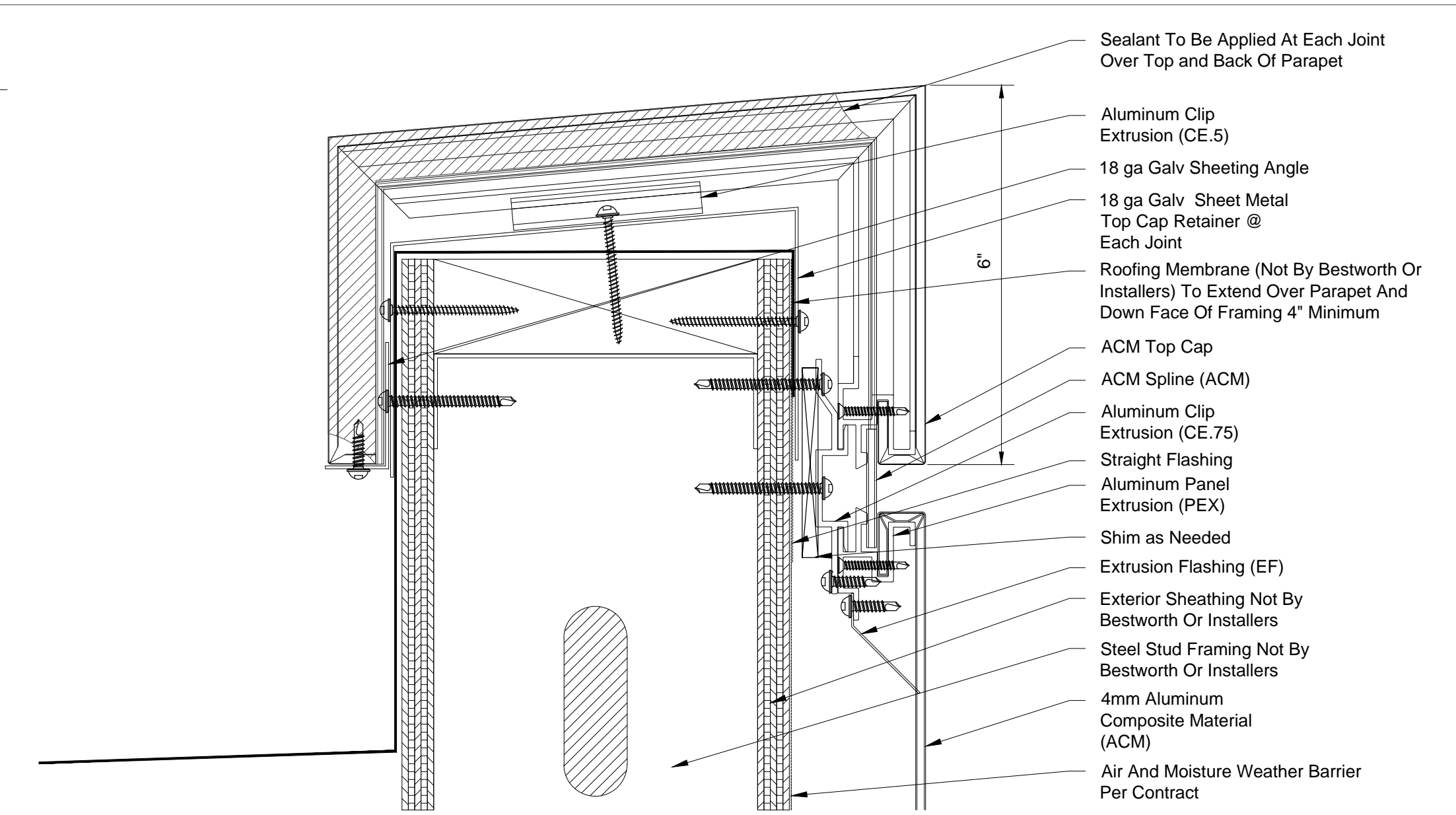


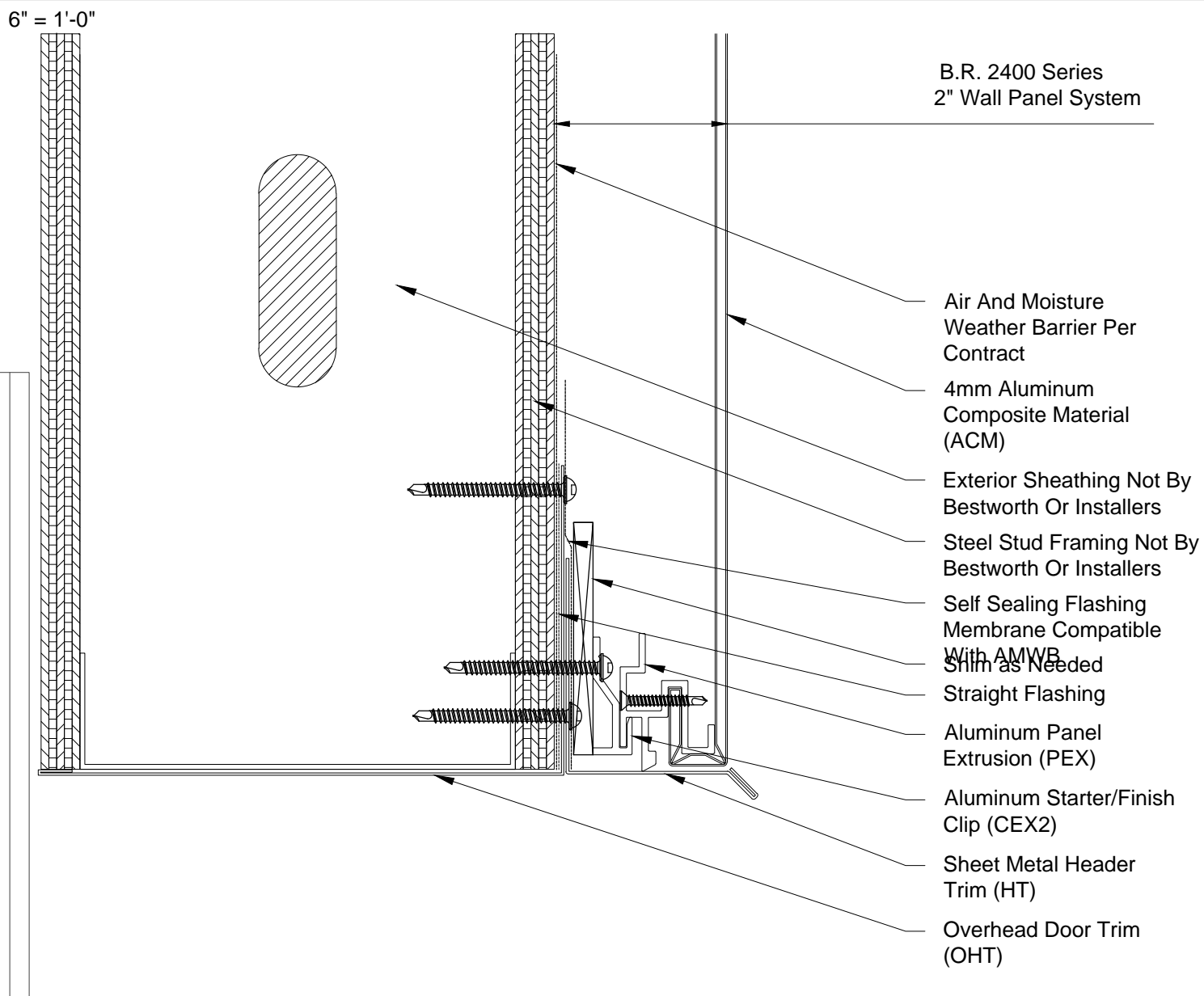
10 2400 ACM @ Door Header- Steel Framing



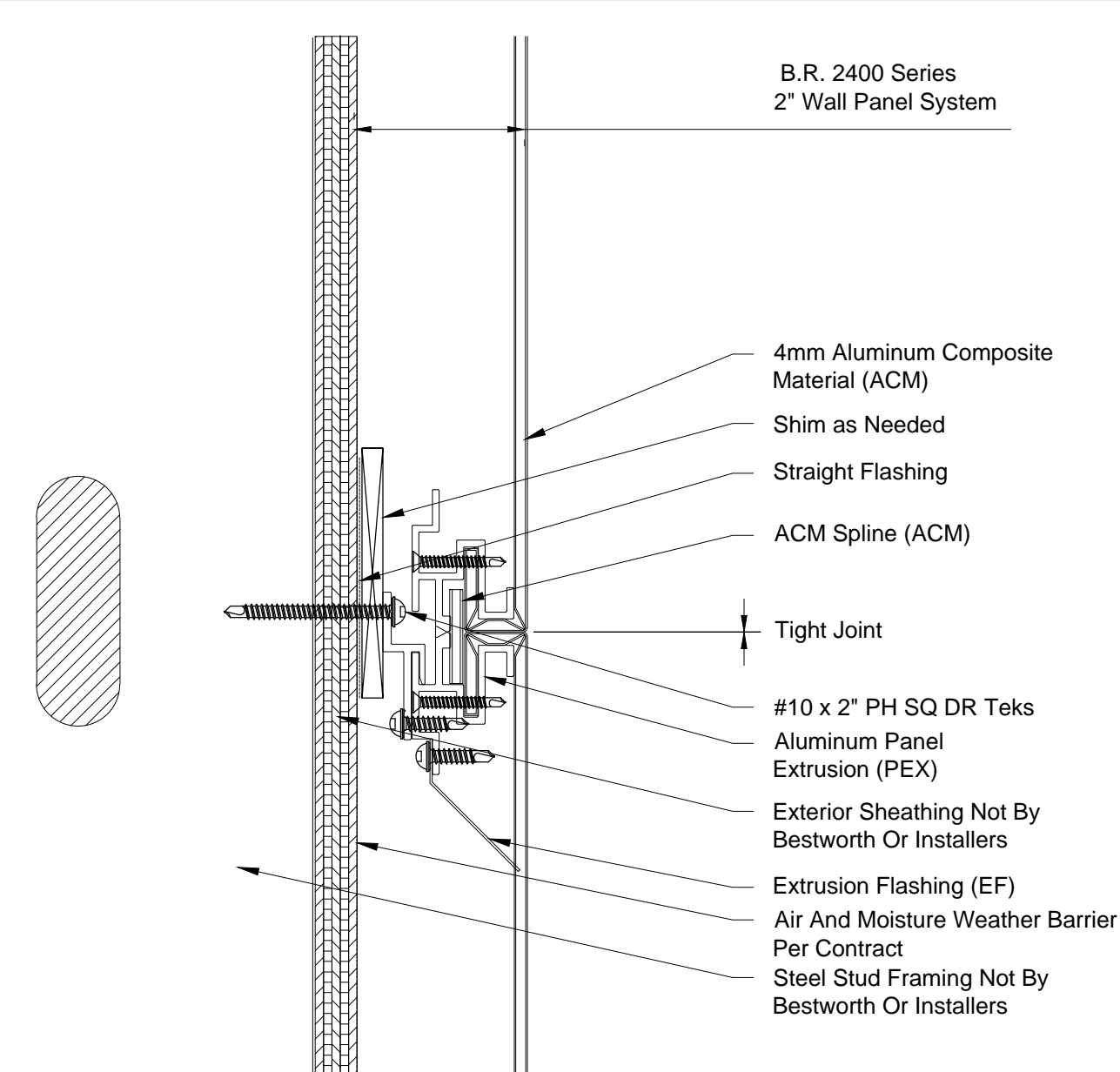
13 2400 ACM @ Overhead Door Jamb - Steel Framing



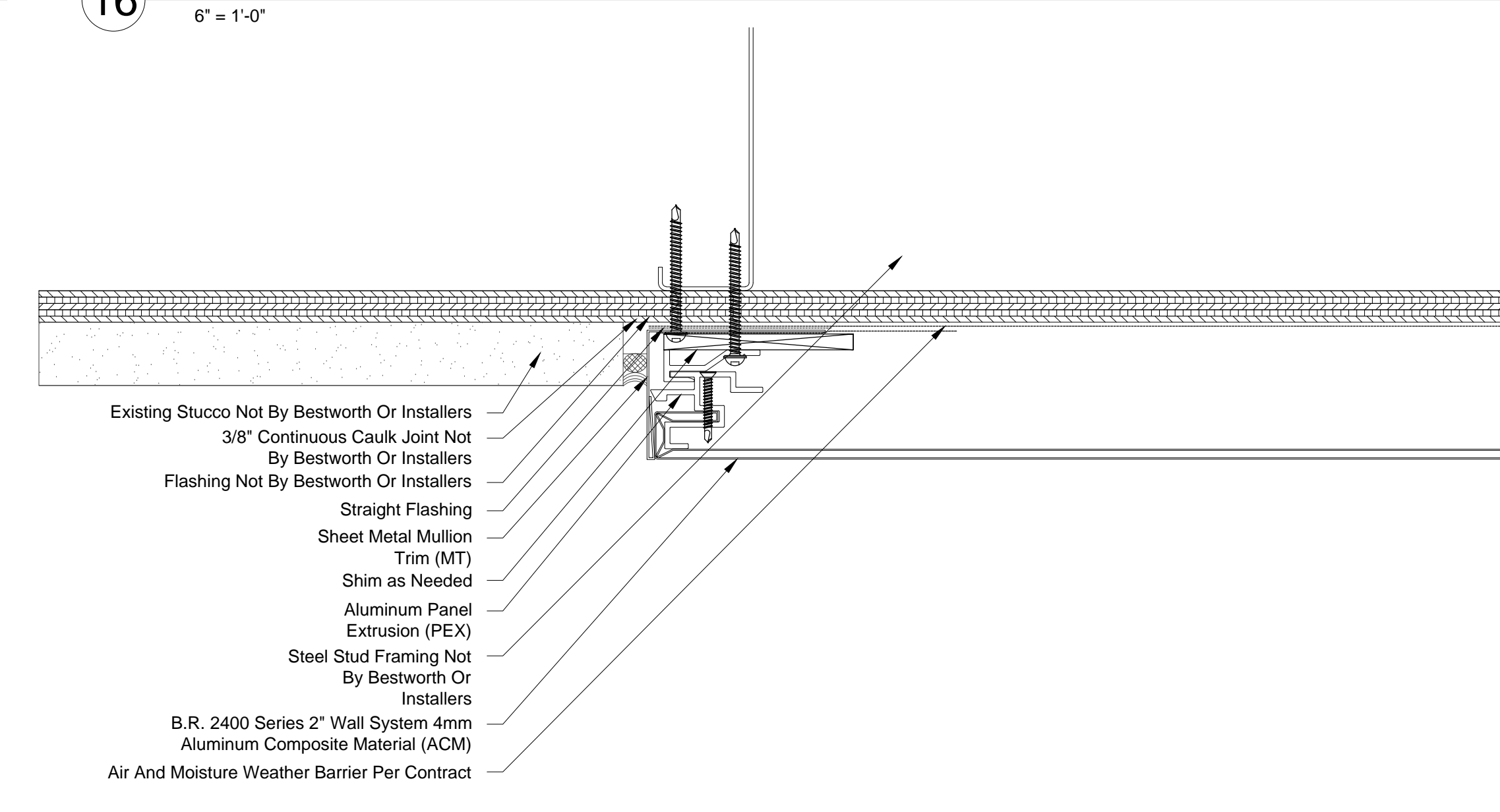
16 2400 ACM @ ACM Top Cap- Steel Framing



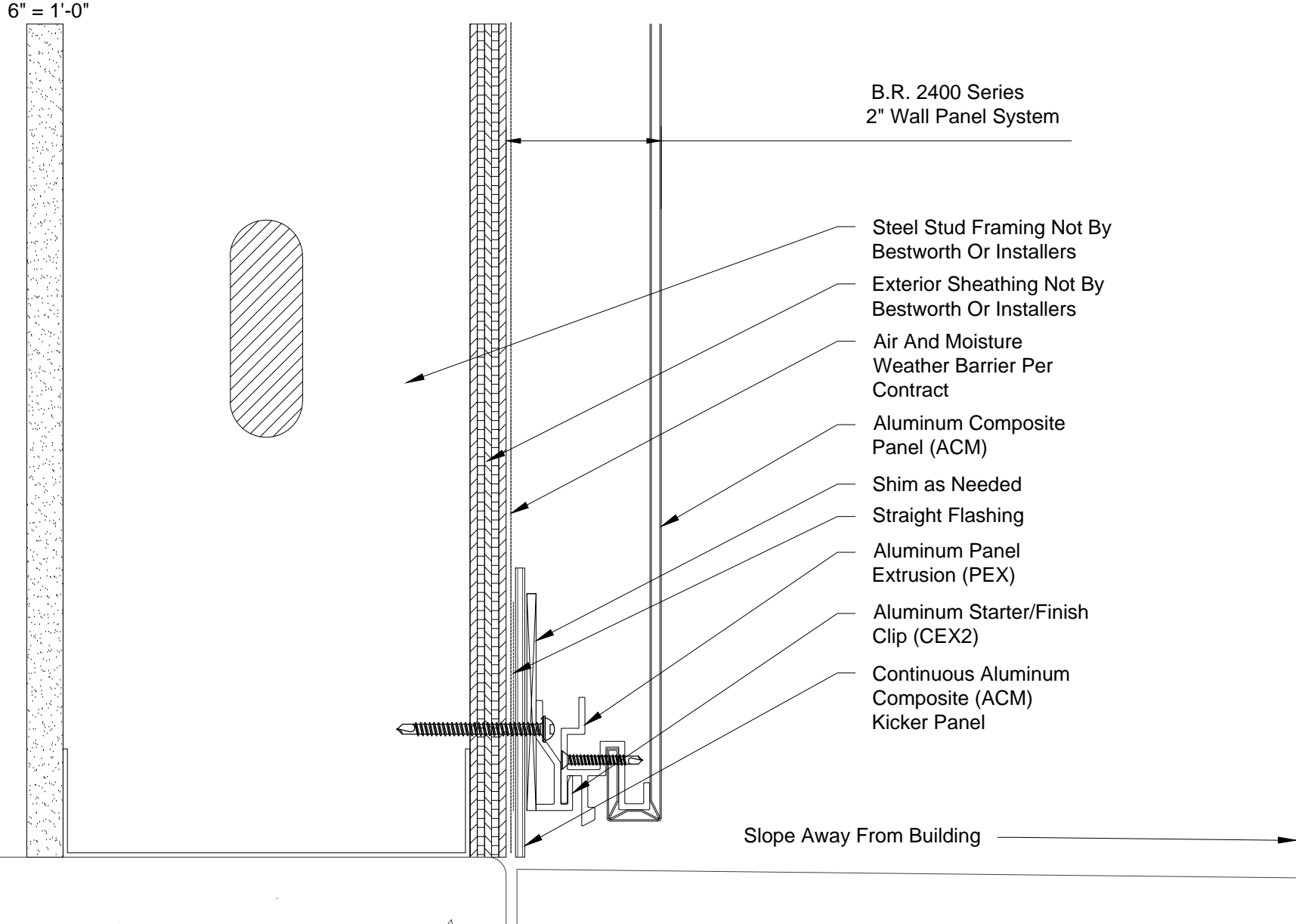
11 2400 ACM @ Overhead Door Header - Steel Framing



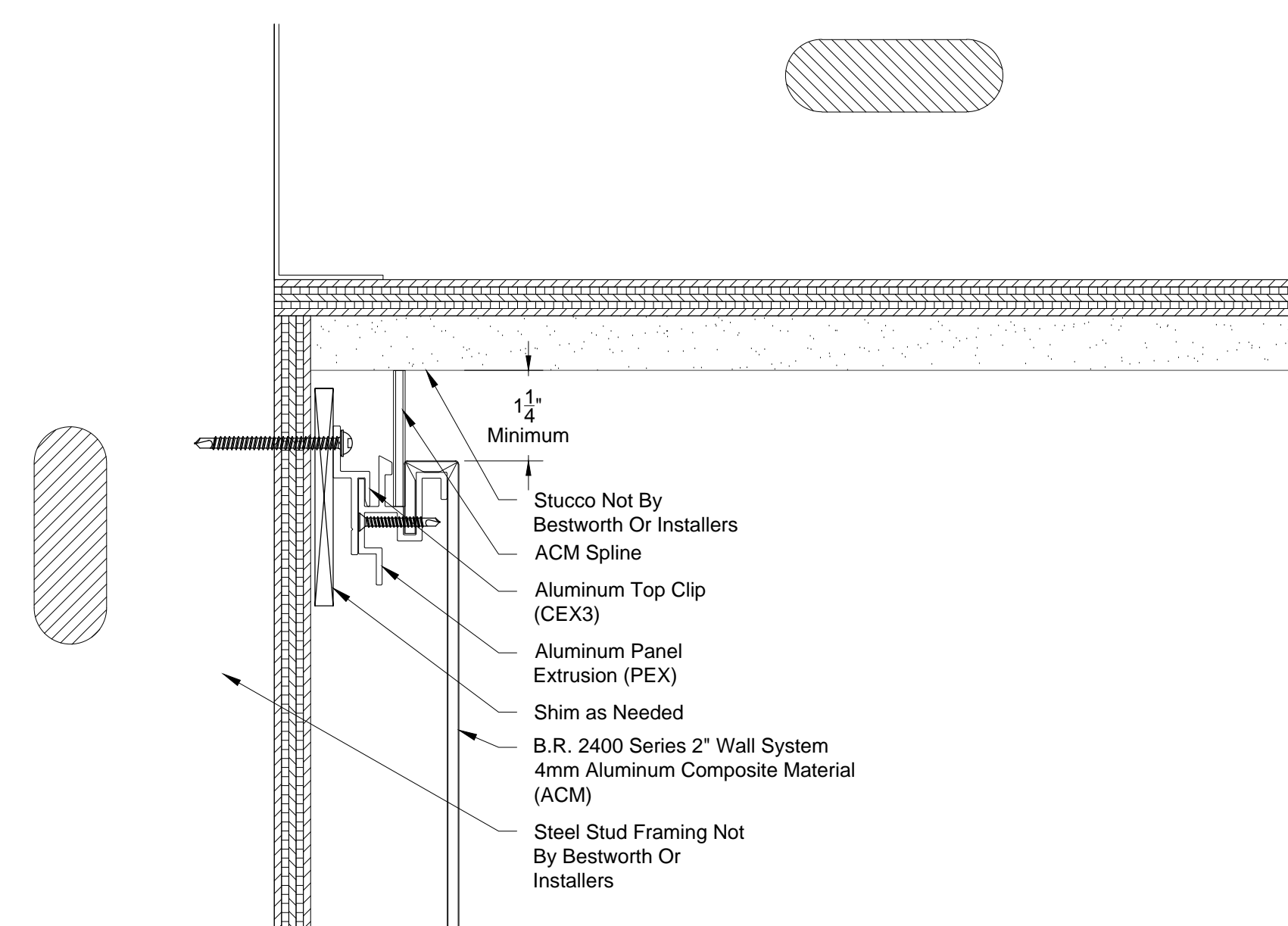
14 2400 ACM @ Tight Joint - Steel Framing



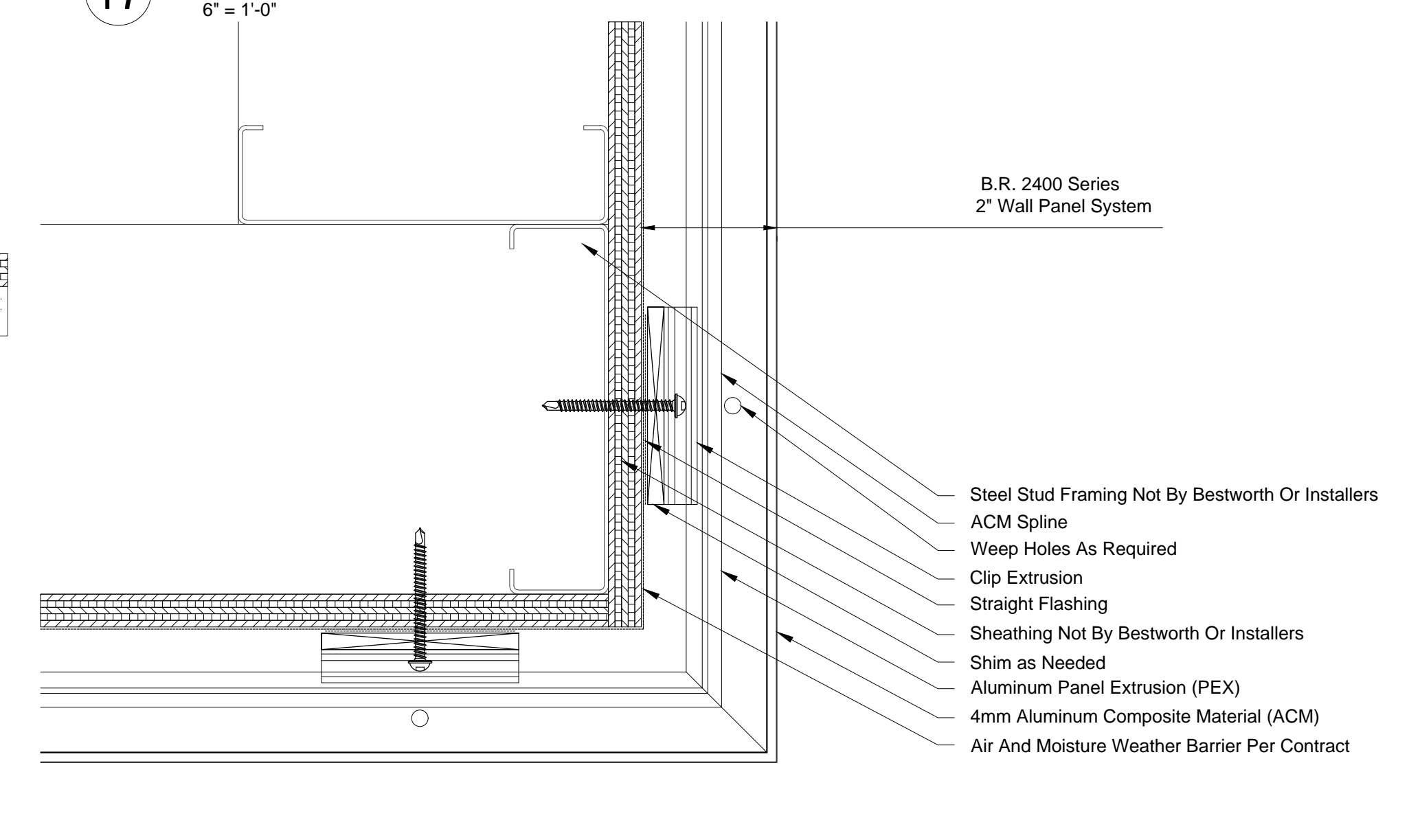
17 2400 ACM @ Termination - Steel Framing



12 2400 ACM @ Base Condition - Steel Framing



15 2400 ACM @ Soffit Termination - Steel Framing



18 2400 ACM @ Outside Corner - Steel Framing

Standard 2400 ACM Steel Framing Details

IF YOU ARE INTERESTED IN USING THESE DETAILS IN YOUR DESIGN SHEETS, PLEASE CONTACT BESTWORTHROMMEL FOR ADDITIONAL CAD DRAWINGS, OR FURTHER INFORMATION REGARDING OUR PANEL SYSTEMS.



BESTWORTHROMMEL
 19818 74TH Ave. N.E.
 Arlington, WA 98223
 360.435.2927 PHONE - 360.435.3617 FAX
 www.bestworth.com