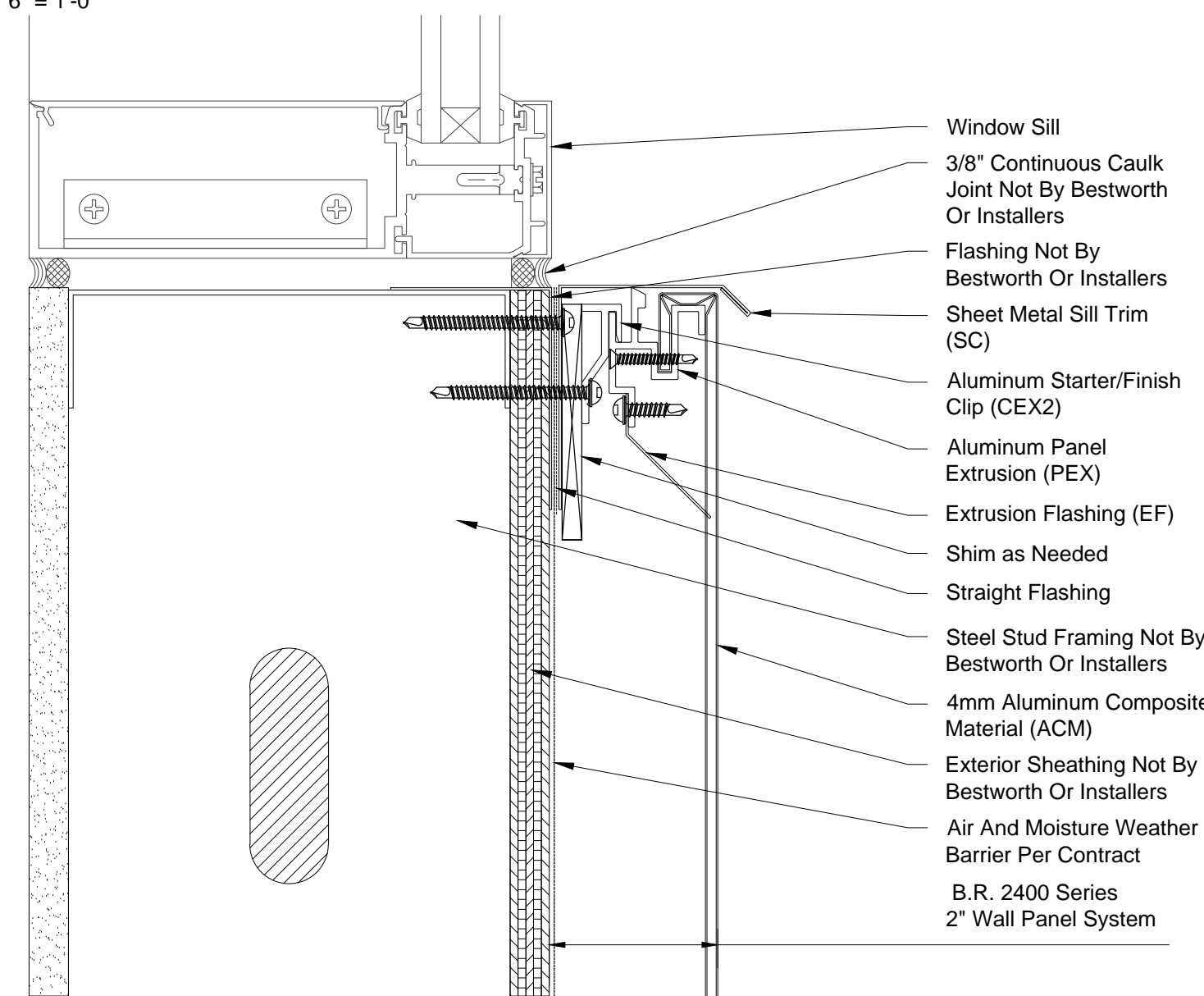


- B.R. 2400 Series 2" Wall Panel System
- Air And Moisture Weather Barrier Per Contract
- 4mm Aluminum Composite Material (ACM)
- Steel Stud Framing Not By Bestworth Or Installers
- Exterior Sheathing Not By Bestworth Or Installers
- Self Sealing Flashing Membrane Compatible With AMWB
- Shim as Needed
- Straight Flashing
- Aluminum Panel Extrusion (PEX)
- Aluminum Starter/Finish Clip (CEX2)
- Sheet Metal Header Trim (HT)
- Flashing Not By Bestworth Or Installers
- 3/8" Continuous Caulk Joint Not By Bestworth Or Installers
- Window Header

01 2400 ACM @ Window Header - Steel Framing

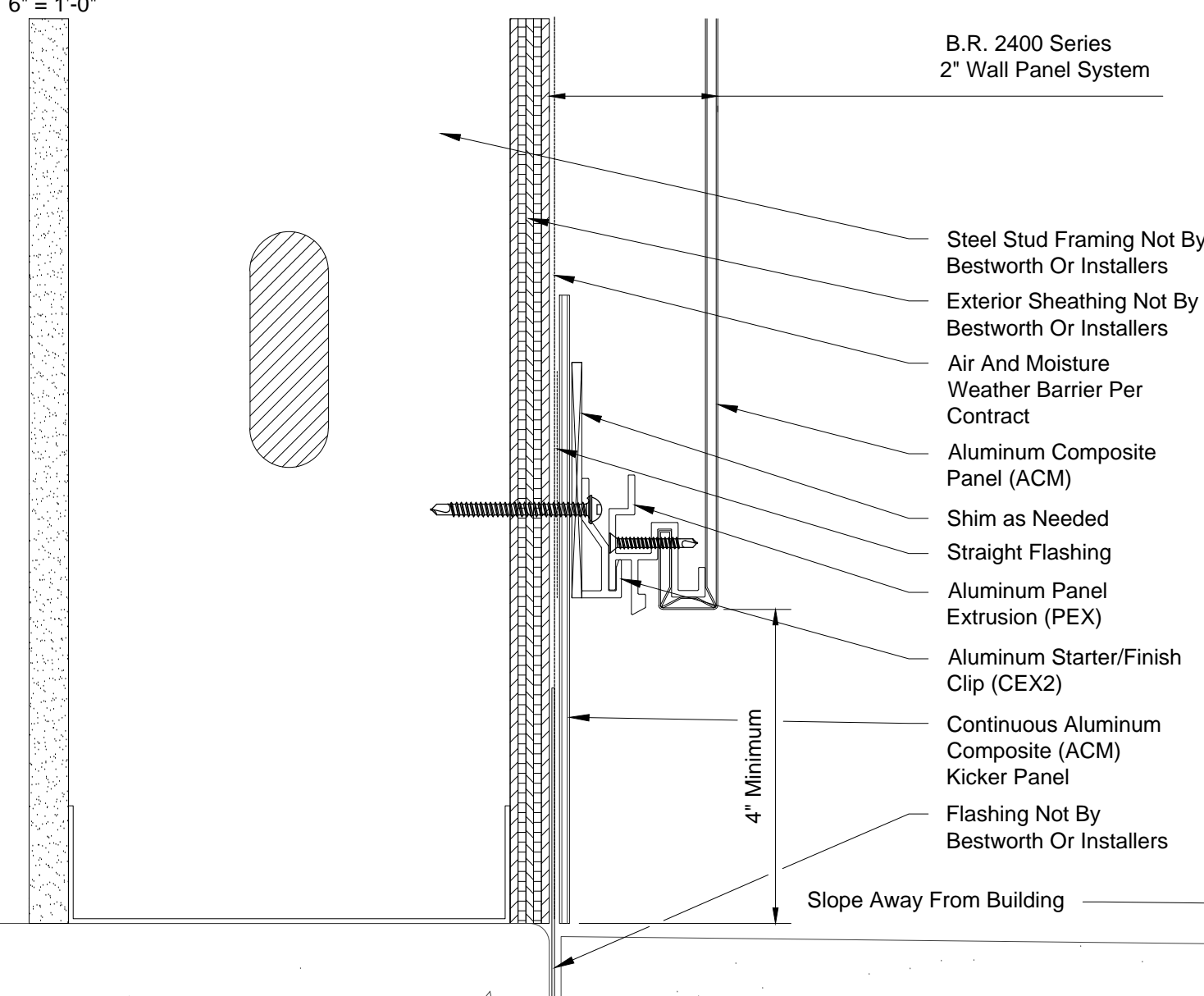
6" = 1'-0"



- Window Sill
- 3/8" Continuous Caulk Joint Not By Bestworth Or Installers
- Flashing Not By Bestworth Or Installers
- Sheet Metal Sill Trim (SC)
- Aluminum Starter/Finish Clip (CEX2)
- Aluminum Panel Extrusion (PEX)
- Extrusion Flashing (EF)
- Shim as Needed
- Straight Flashing
- Steel Stud Framing Not By Bestworth Or Installers
- 4mm Aluminum Composite Material (ACM)
- Exterior Sheathing Not By Bestworth Or Installers
- Air And Moisture Weather Barrier Per Contract
- B.R. 2400 Series 2" Wall Panel System

02 2400 ACM @ Window Sill - Steel Framing

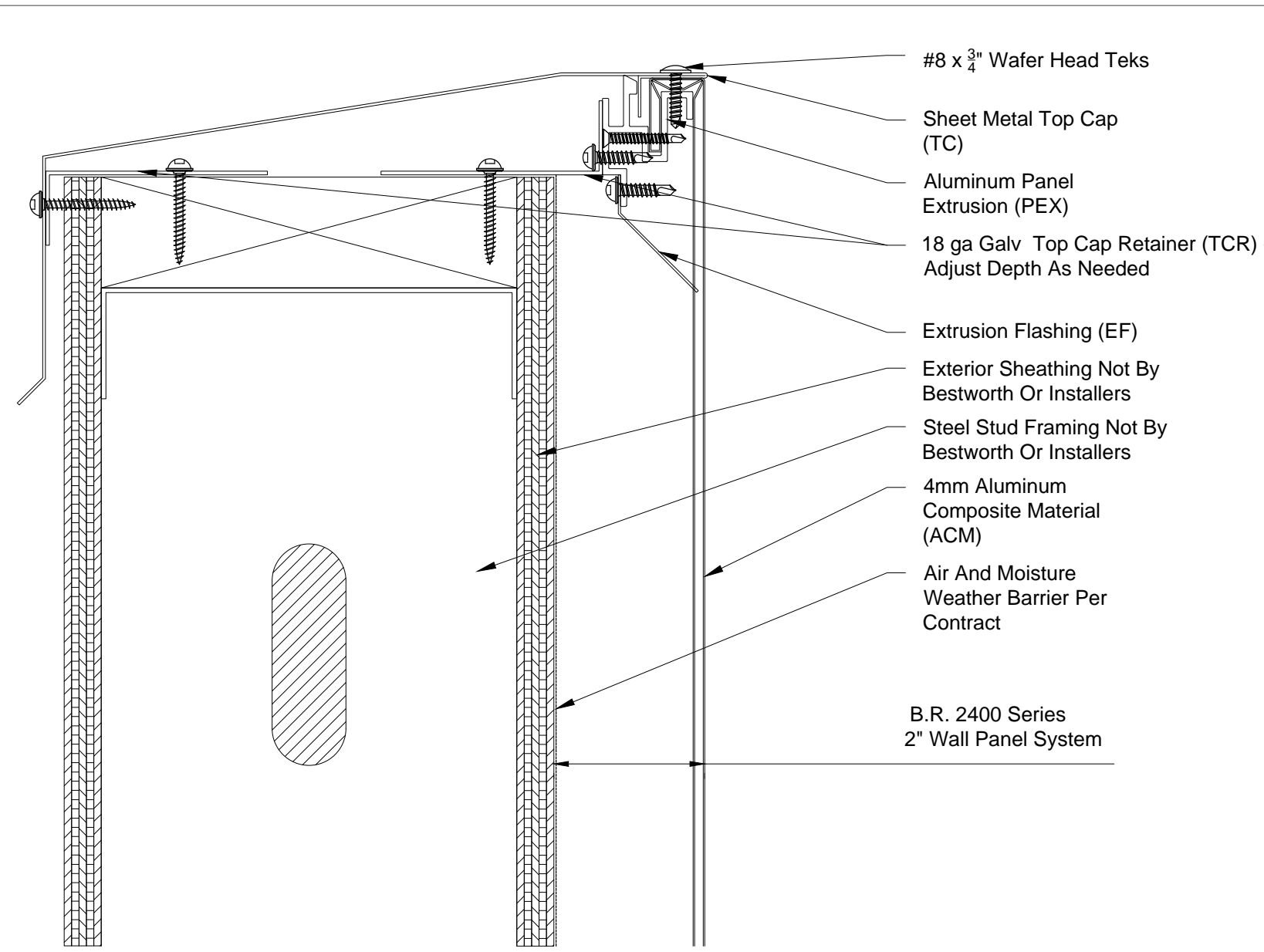
6" = 1'-0"



- B.R. 2400 Series 2" Wall Panel System
- Steel Stud Framing Not By Bestworth Or Installers
- Exterior Sheathing Not By Bestworth Or Installers
- Air And Moisture Weather Barrier Per Contract
- Aluminum Composite Panel (ACM)
- Shim as Needed
- Straight Flashing
- Aluminum Panel Extrusion (PEX)
- Aluminum Starter/Finish Clip (CEX2)
- Continuous Aluminum Composite (ACM) Kicker Panel
- Flashing Not By Bestworth Or Installers
- 4" Minimum
- Slope Away From Building

03 2400 ACM @ Base Condition - Steel Framing

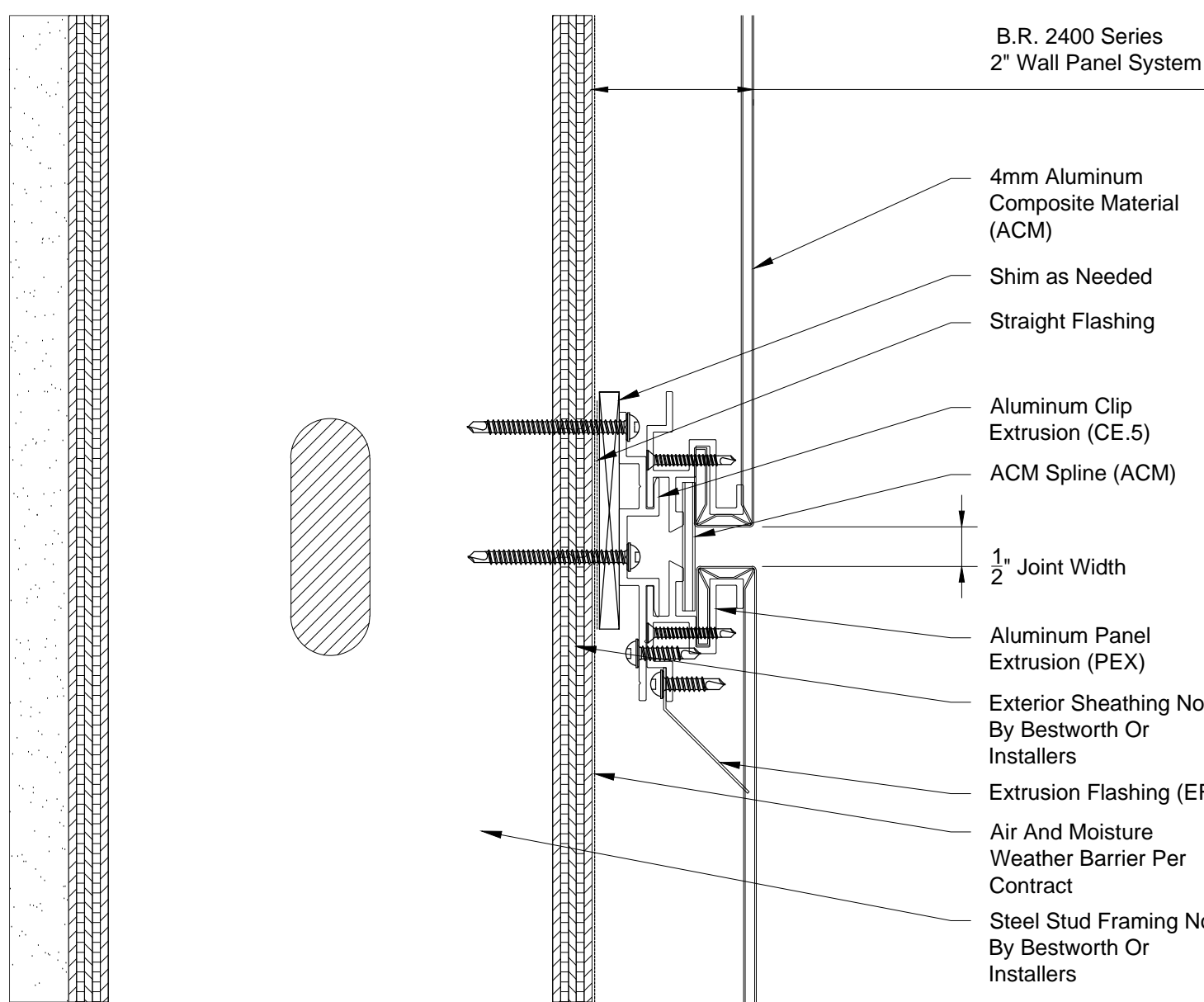
6" = 1'-0"



- #8 x 3/4" Wafer Head Tek
- Sheet Metal Top Cap (TC)
- Aluminum Panel Extrusion (PEX)
- 18 ga Galv. Top Cap Retainer (TCR) - Adjust Depth As Needed
- Extrusion Flashing (EF)
- Exterior Sheathing Not By Bestworth Or Installers
- Steel Stud Framing Not By Bestworth Or Installers
- 4mm Aluminum Composite Material (ACM)
- Air And Moisture Weather Barrier Per Contract
- B.R. 2400 Series 2" Wall Panel System

04 2400 ACM @ Sheet Metal Top Cap - Steel Framing

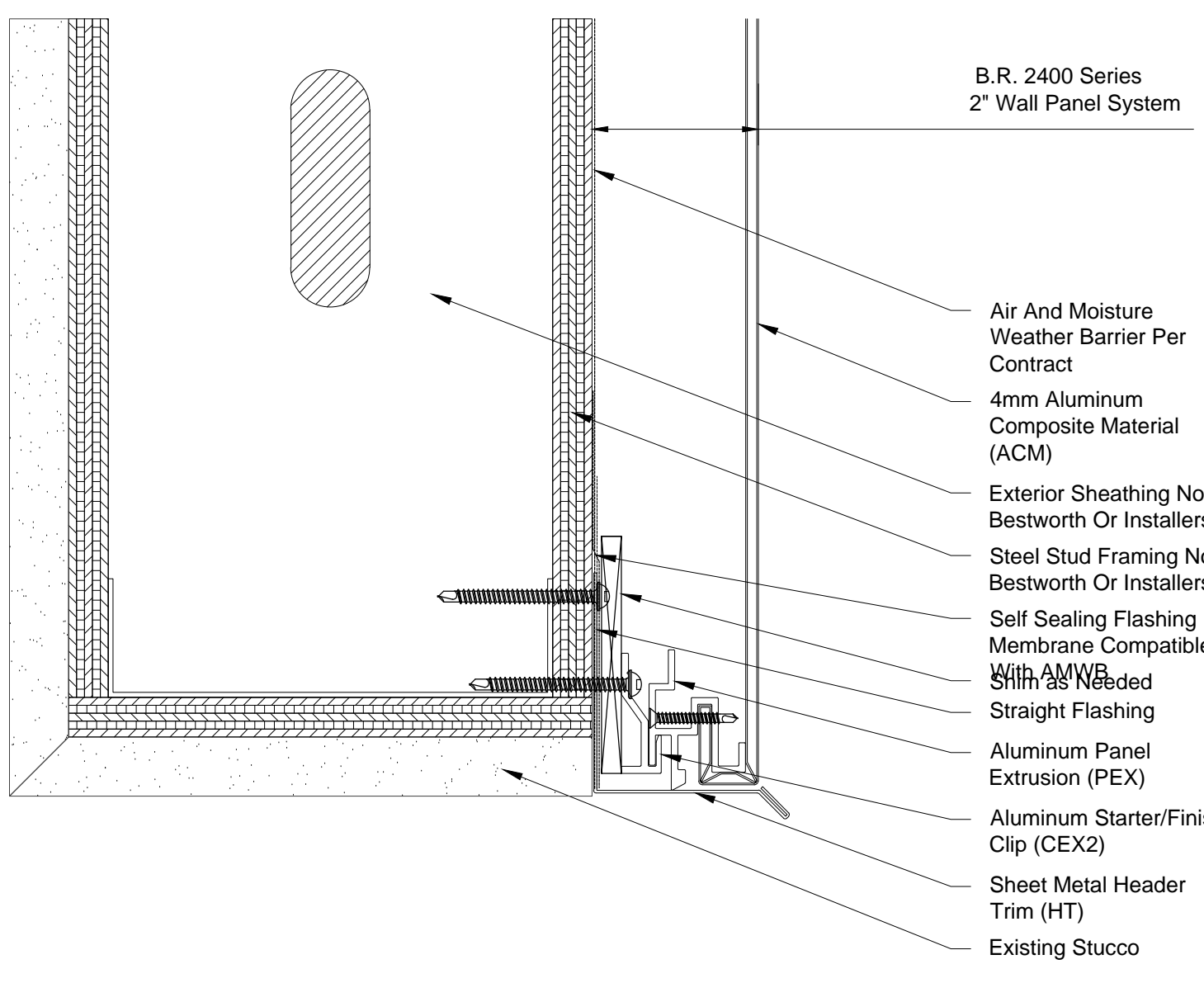
6" = 1'-0"



- B.R. 2400 Series 2" Wall Panel System
- 4mm Aluminum Composite Material (ACM)
- Shim as Needed
- Straight Flashing
- Aluminum Clip Extrusion (CE.5)
- ACM Spline (ACM)
- 1/2" Joint Width
- Aluminum Panel Extrusion (PEX)
- Exterior Sheathing Not By Bestworth Or Installers
- Extrusion Flashing (EF)
- Air And Moisture Weather Barrier Per Contract
- Steel Stud Framing Not By Bestworth Or Installers

05 2400 ACM @ Panel Joint - Steel Framing

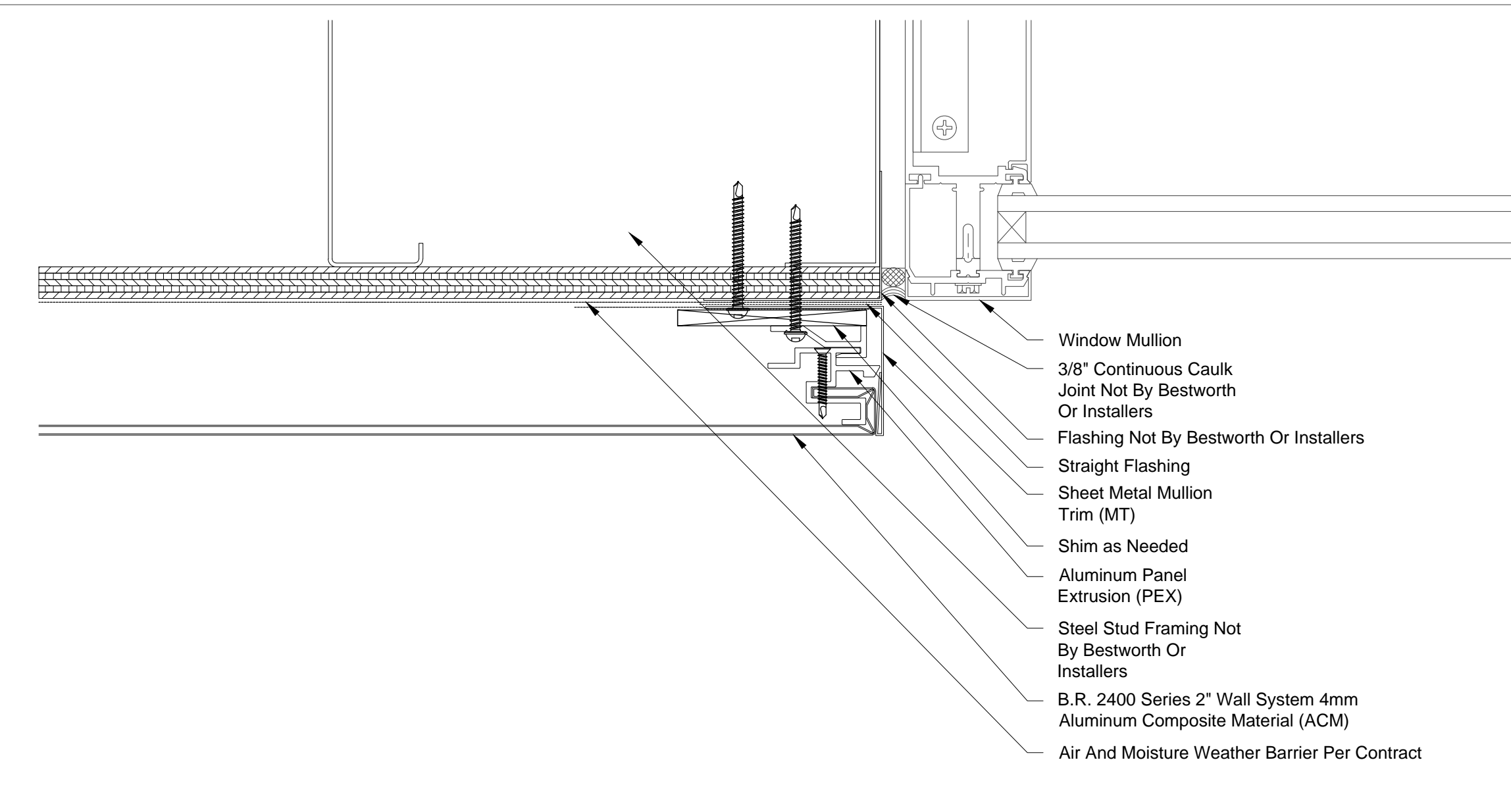
6" = 1'-0"



- B.R. 2400 Series 2" Wall Panel System
- Air And Moisture Weather Barrier Per Contract
- 4mm Aluminum Composite Material (ACM)
- Exterior Sheathing Not By Bestworth Or Installers
- Steel Stud Framing Not By Bestworth Or Installers
- Self Sealing Flashing Membrane Compatible With AMWB
- Shim as Needed
- Straight Flashing
- Aluminum Panel Extrusion (PEX)
- Aluminum Starter/Finish Clip (CEX2)
- Sheet Metal Header Trim (HT)
- Existing Stucco

06 2400 ACM @ Soffit Termination - Steel Framing

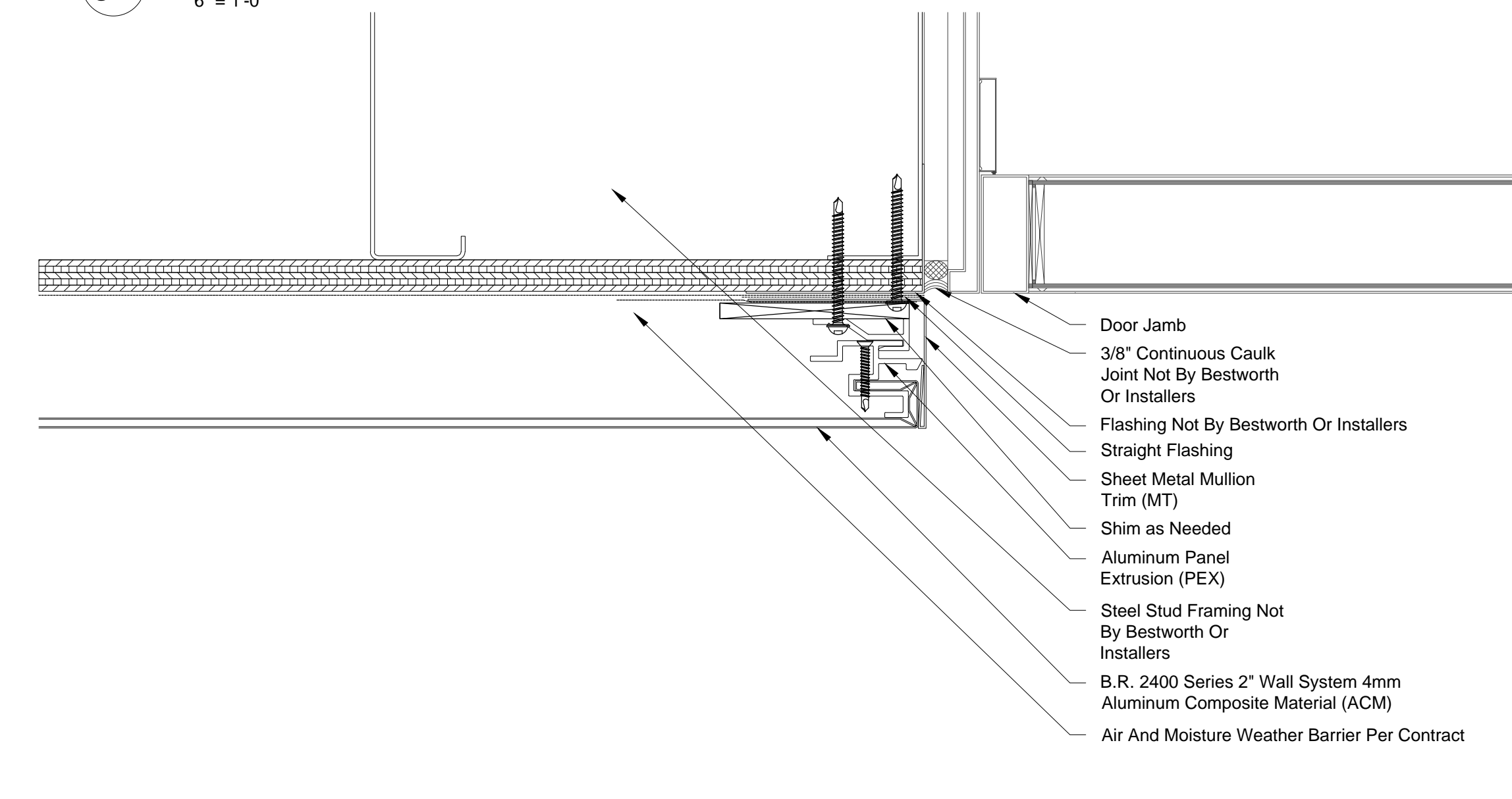
6" = 1'-0"



- Window Mullion
- 3/8" Continuous Caulk Joint Not By Bestworth Or Installers
- Flashing Not By Bestworth Or Installers
- Straight Flashing
- Sheet Metal Mullion Trim (MT)
- Shim as Needed
- Aluminum Panel Extrusion (PEX)
- Steel Stud Framing Not By Bestworth Or Installers
- B.R. 2400 Series 2" Wall System 4mm Aluminum Composite Material (ACM)
- Air And Moisture Weather Barrier Per Contract

07 2400 ACM @ Window Mullion - Steel Framing

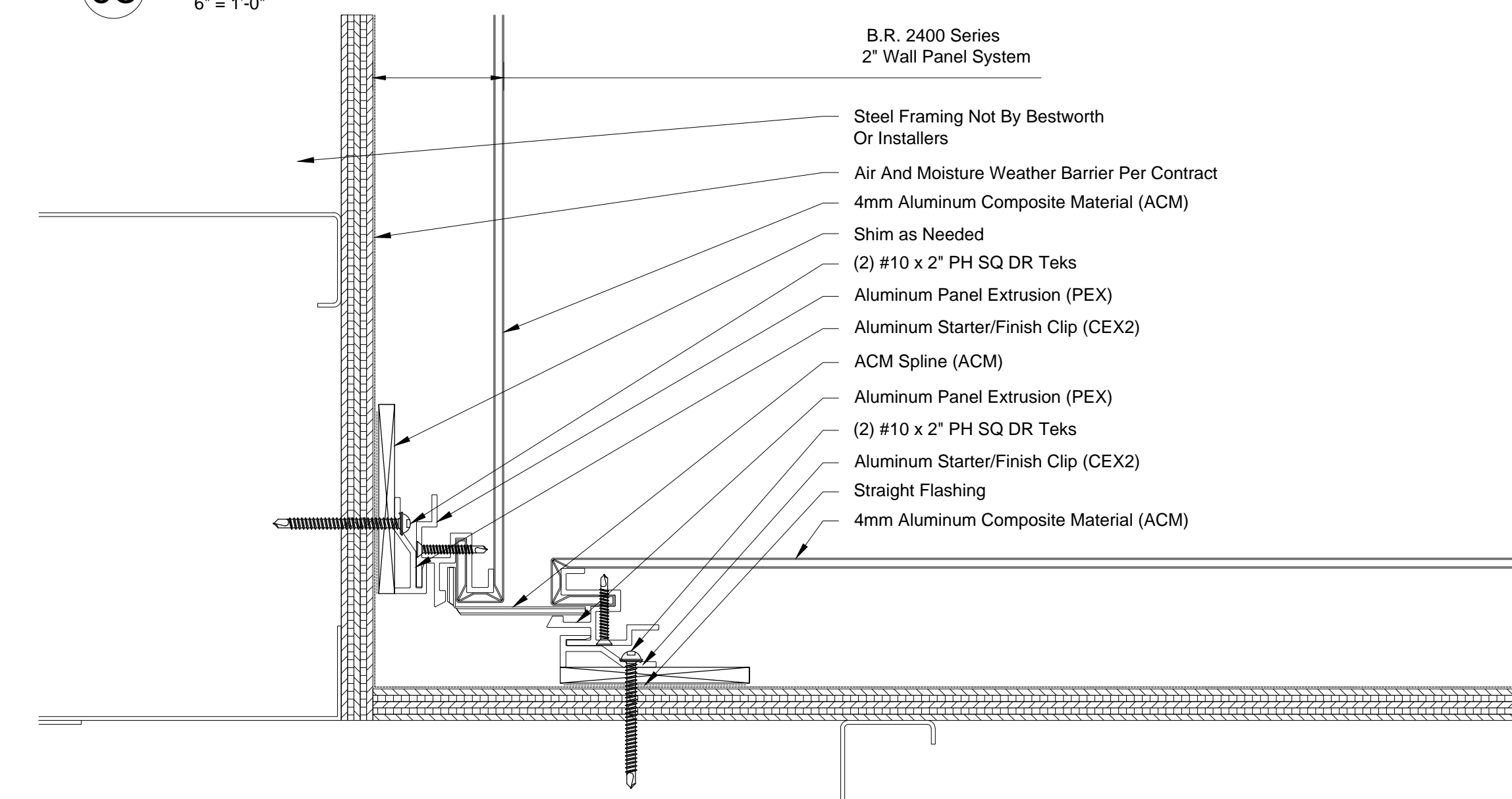
6" = 1'-0"



- Door Jamb
- 3/8" Continuous Caulk Joint Not By Bestworth Or Installers
- Flashing Not By Bestworth Or Installers
- Straight Flashing
- Sheet Metal Mullion Trim (MT)
- Shim as Needed
- Aluminum Panel Extrusion (PEX)
- Steel Stud Framing Not By Bestworth Or Installers
- B.R. 2400 Series 2" Wall System 4mm Aluminum Composite Material (ACM)
- Air And Moisture Weather Barrier Per Contract

08 2400 ACM @ Door Jamb - Steel Framing

6" = 1'-0"



- B.R. 2400 Series 2" Wall Panel System
- Steel Framing Not By Bestworth Or Installers
- Air And Moisture Weather Barrier Per Contract
- 4mm Aluminum Composite Material (ACM)
- Shim as Needed
- (2) #10 x 2" PH SQ DR Tek
- Aluminum Panel Extrusion (PEX)
- Aluminum Starter/Finish Clip (CEX2)
- ACM Spline (ACM)
- Aluminum Panel Extrusion (PEX)
- (2) #10 x 2" PH SQ DR Tek
- Aluminum Starter/Finish Clip (CEX2)
- Straight Flashing
- 4mm Aluminum Composite Material (ACM)

09 2400 ACM @ Inside Corner - Steel Framing

6" = 1'-0"

Standard 2400 ACM Steel Framing Details

IF YOU ARE INTERESTED IN USING THESE DETAILS IN YOUR DESIGN SHEETS, PLEASE CONTACT BESTWORTHROMMEL FOR ADDITIONAL CAD DRAWINGS, OR FURTHER INFORMATION REGARDING OUR PANEL SYSTEMS.



BESTWORTHROMMEL
19818 74TH Ave. N.E.
Arlington, WA 98223

360.435.2927 PHONE - 360.435.3617 FAX
www.bestworth.com