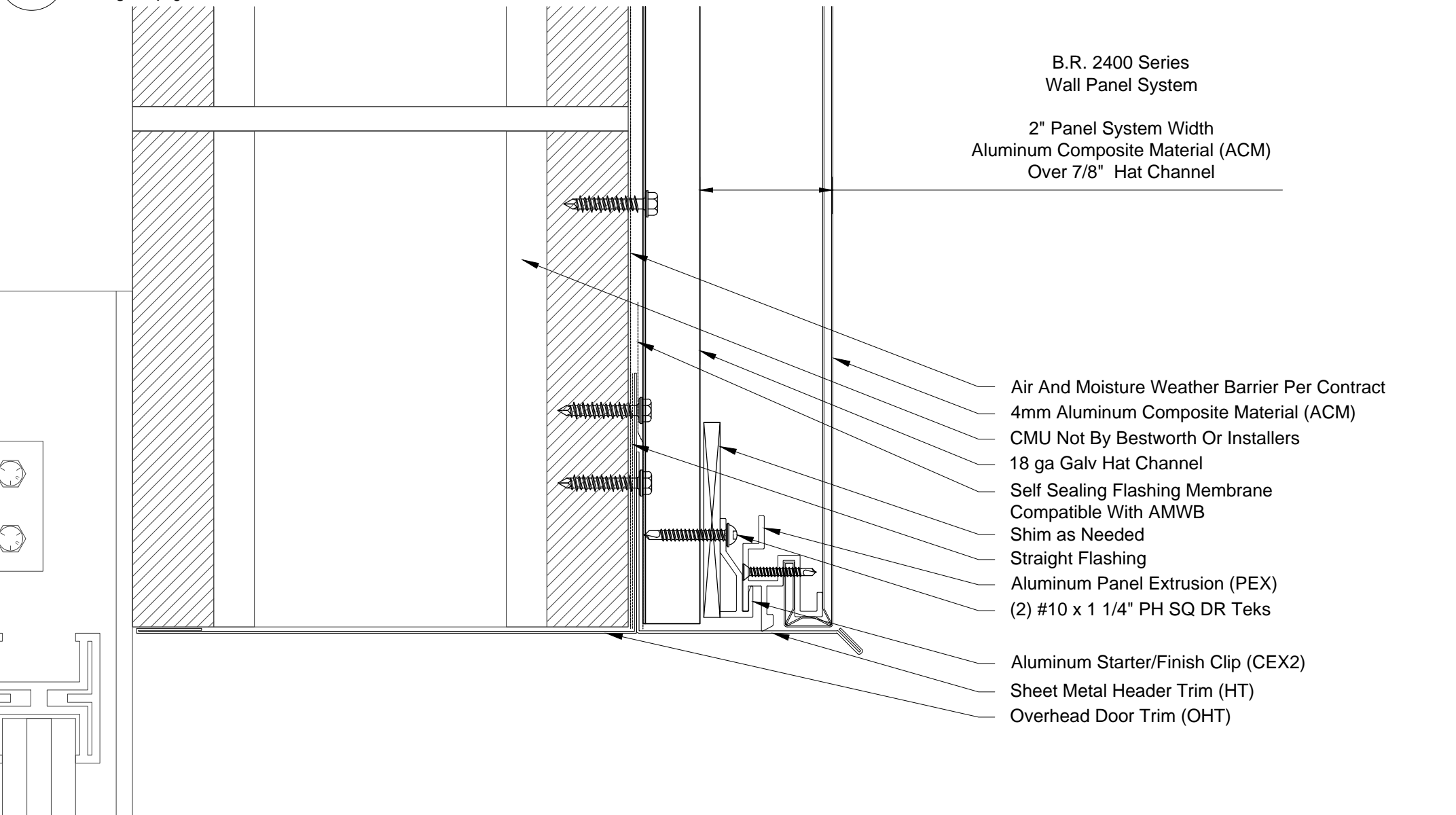
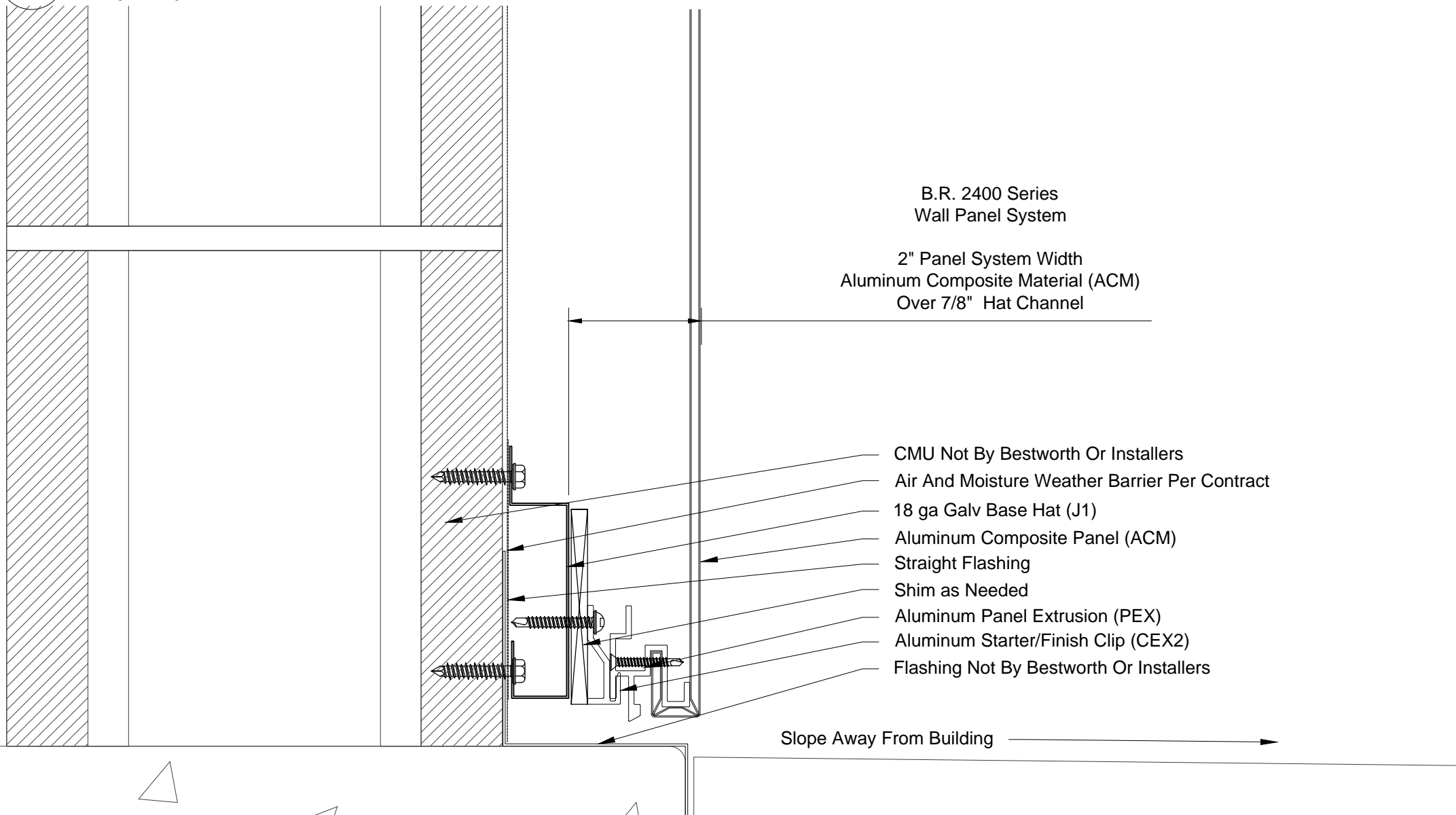


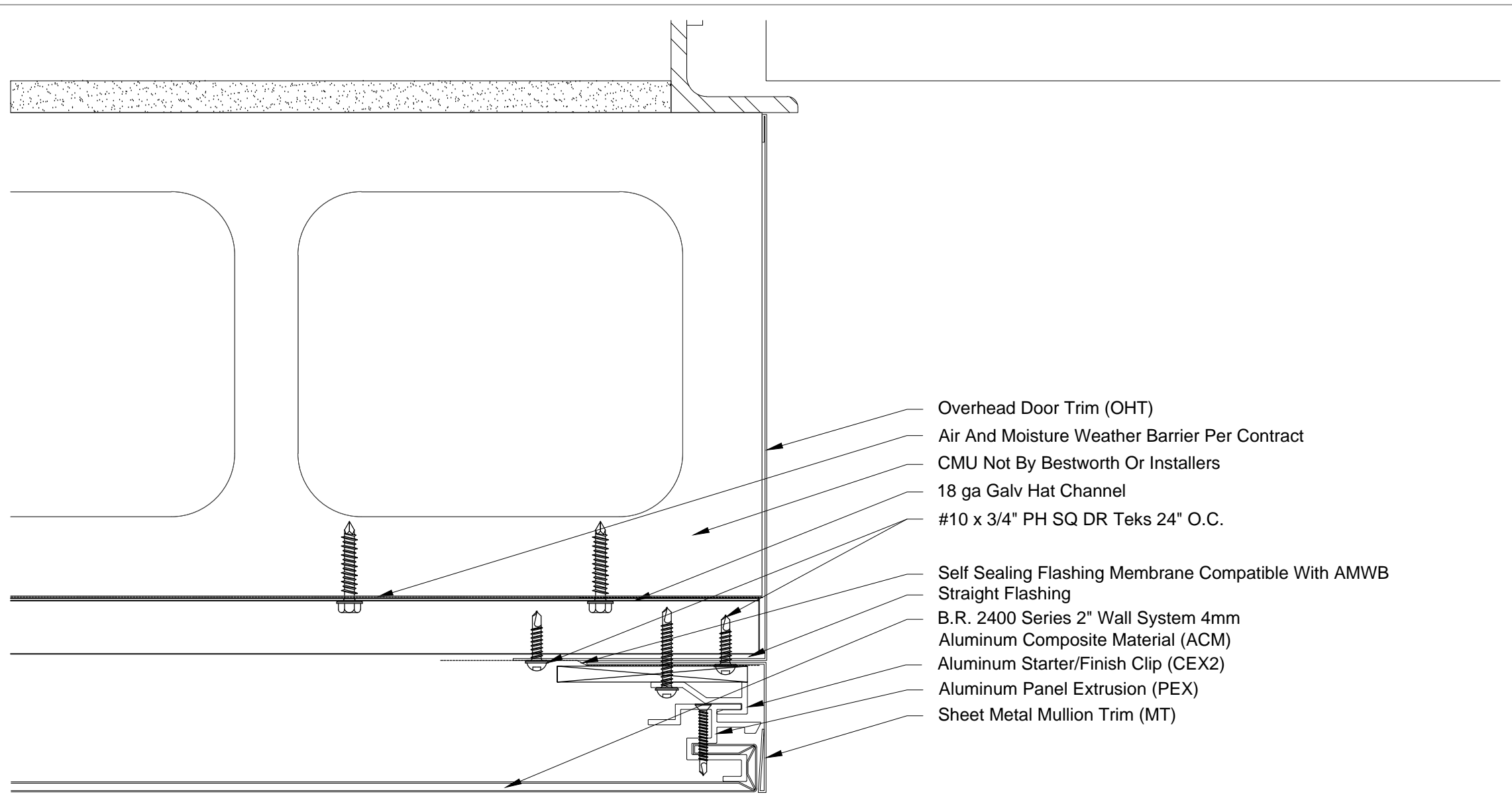
10 2400 ACM @ Door Header - CMU
6" = 1'-0"



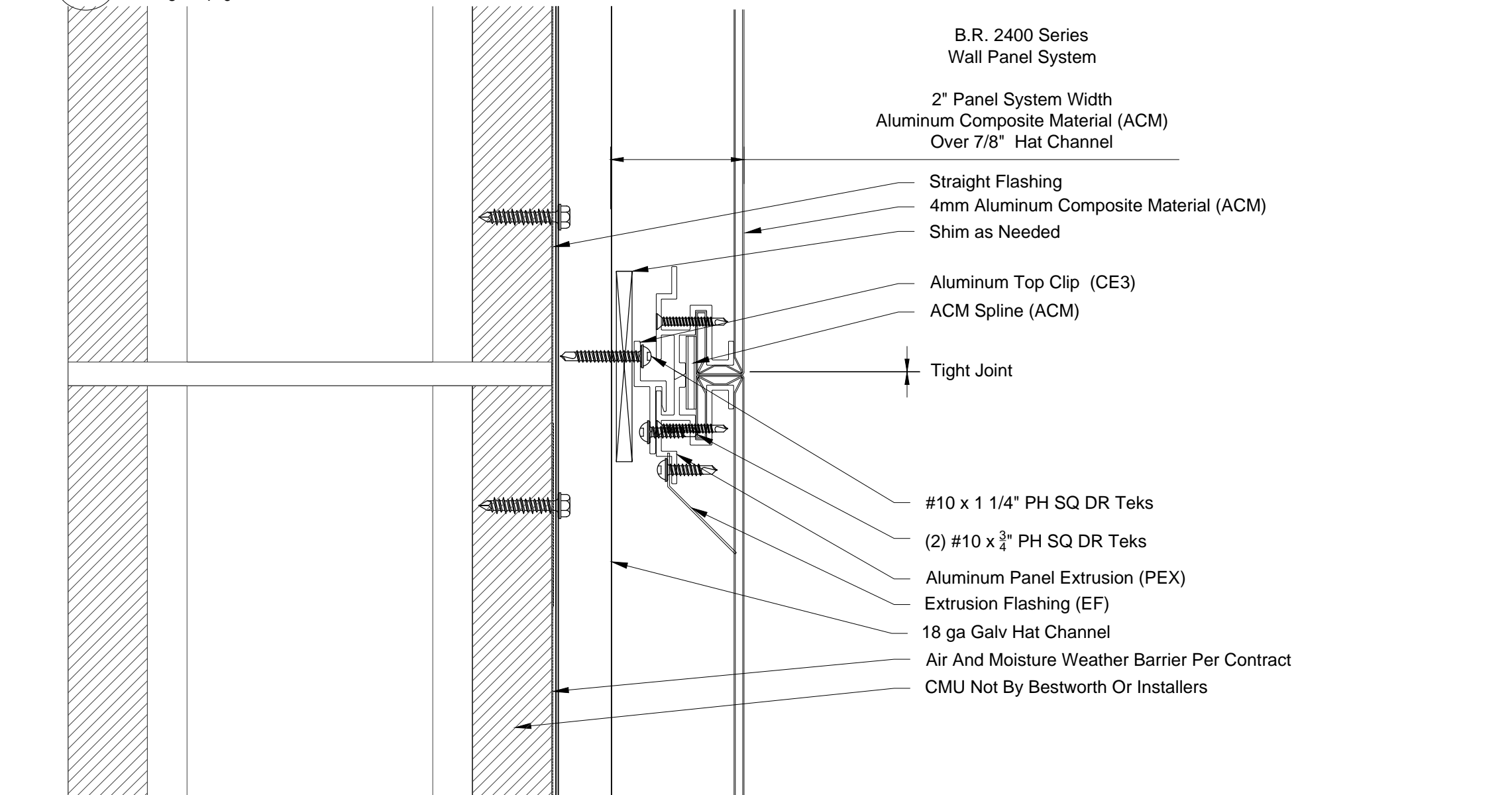
11 2400 ACM @ Overhead Door Header - CMU
6" = 1'-0"



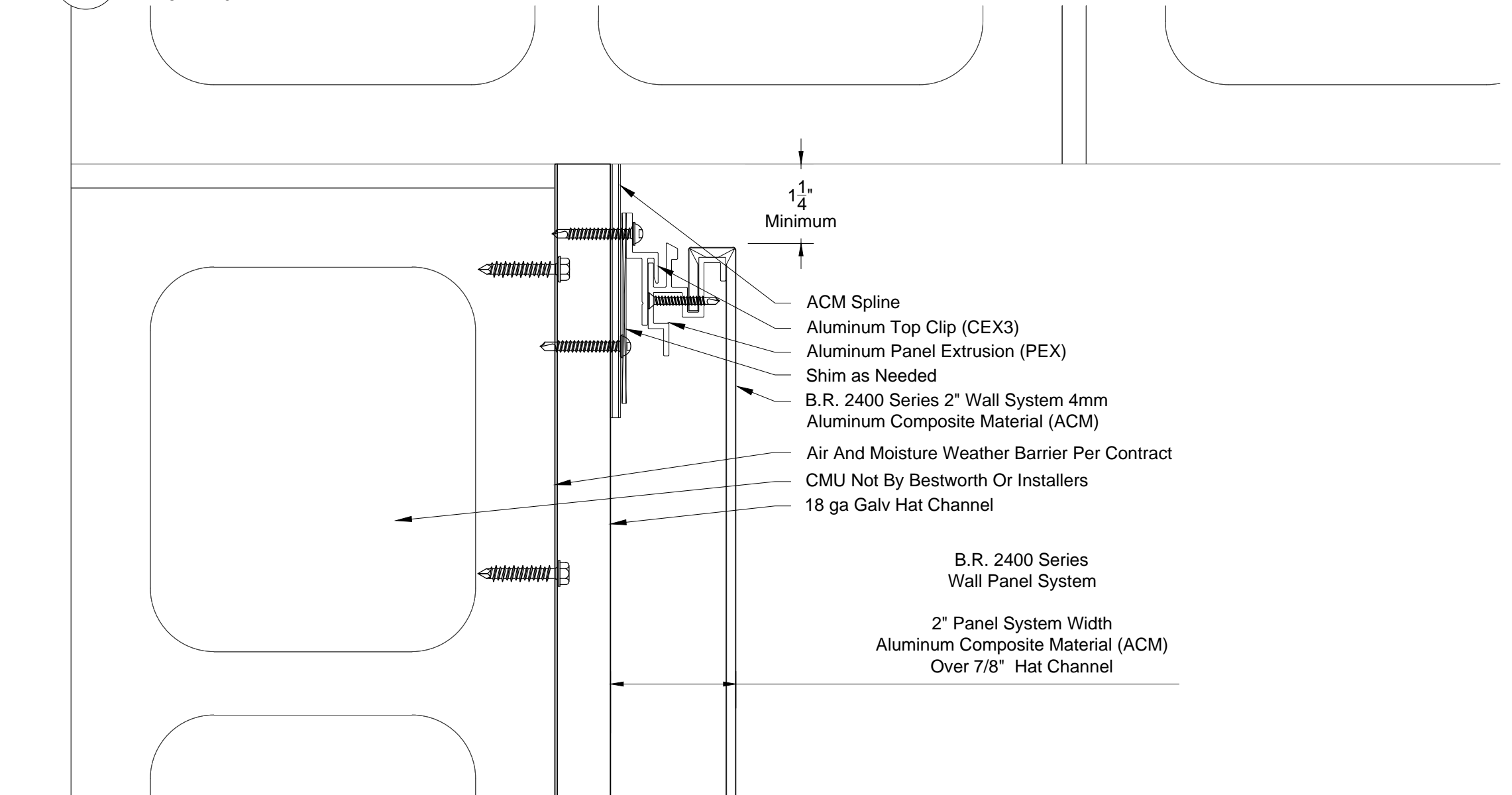
12 2400 ACM @ Base Condition - CMU
6" = 1'-0"



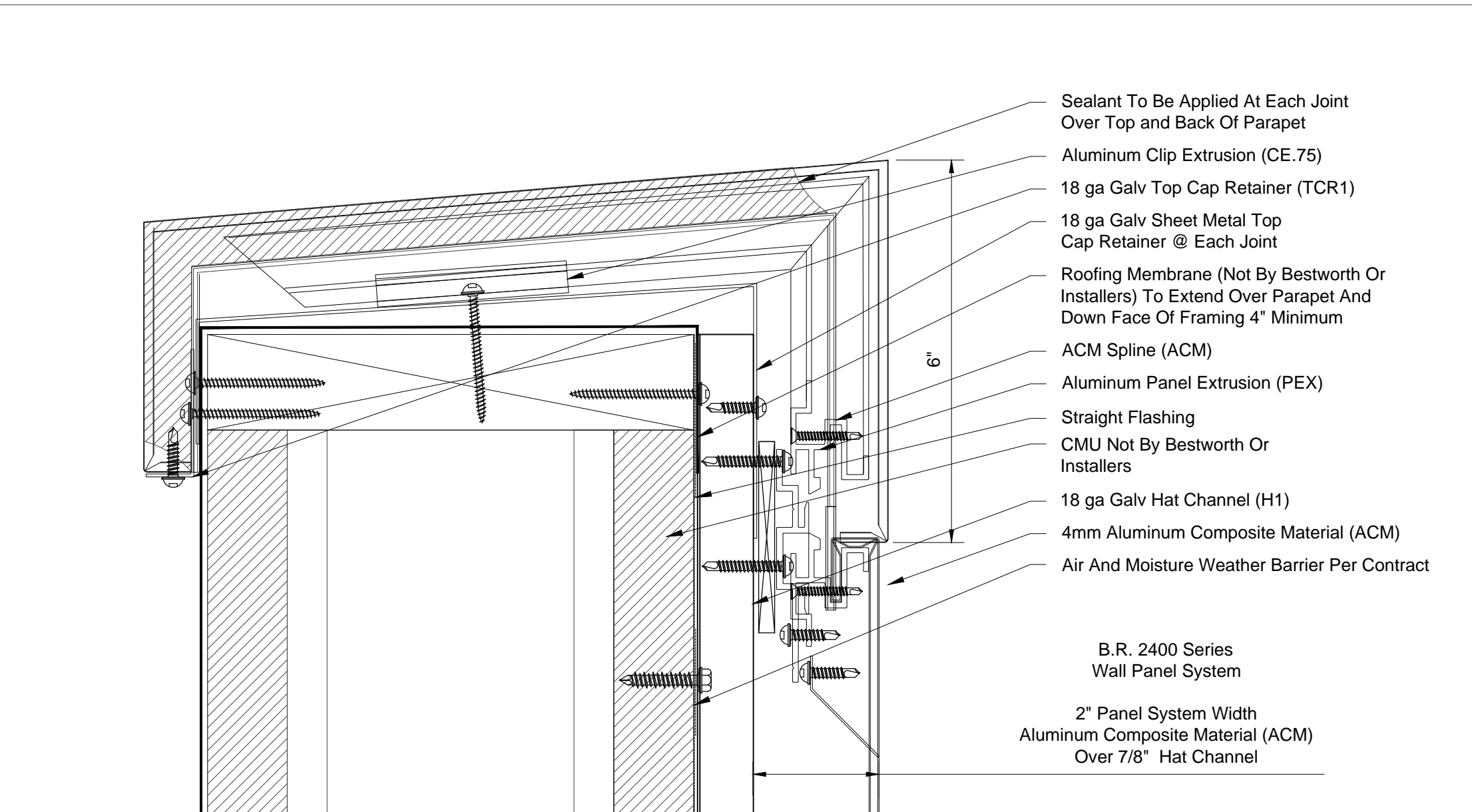
13 2400 ACM @ Overhead Door Jamb - CMU
6" = 1'-0"



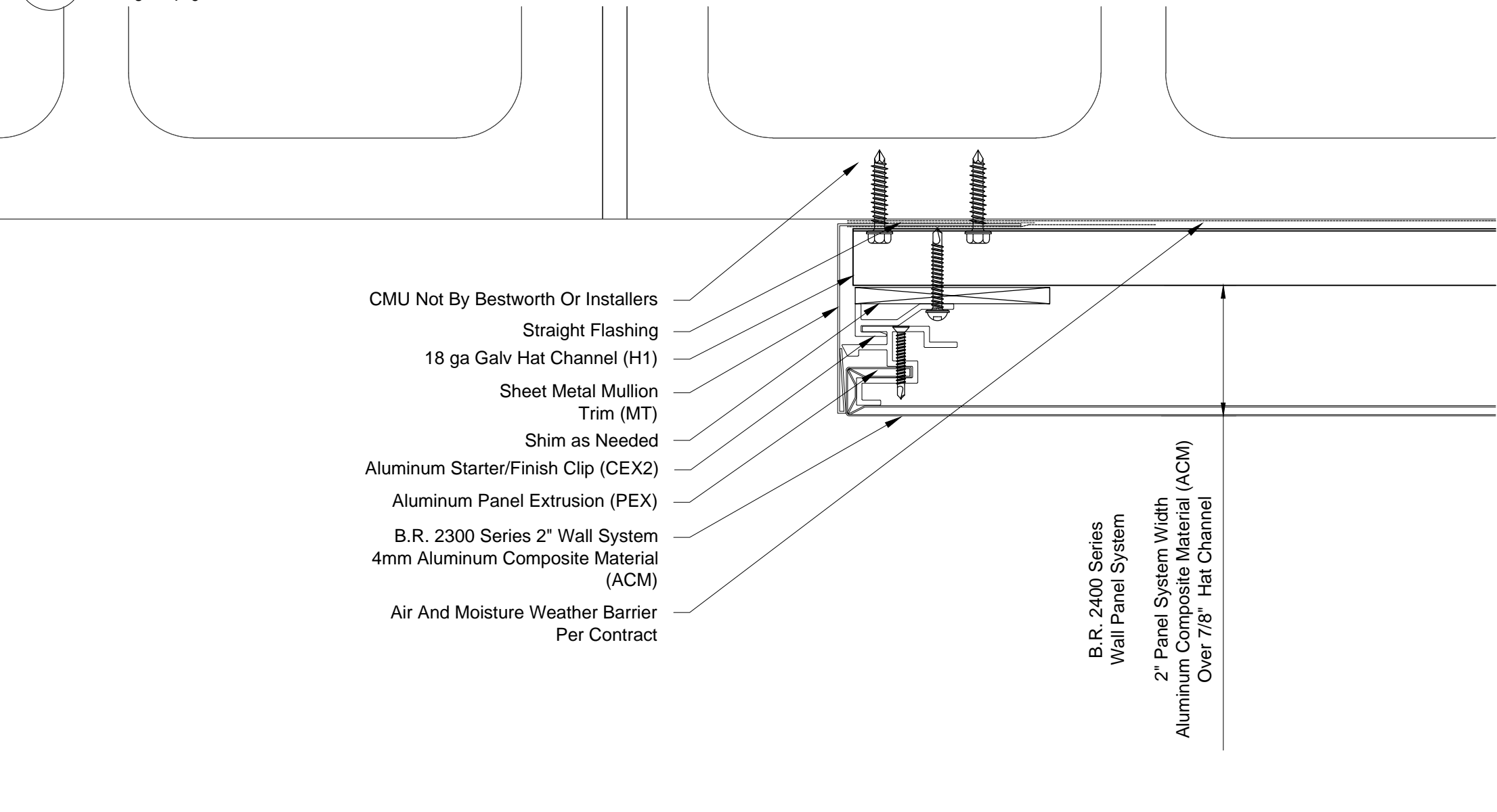
14 2400 ACM @ Tight Panel Joint - CMU
6" = 1'-0"



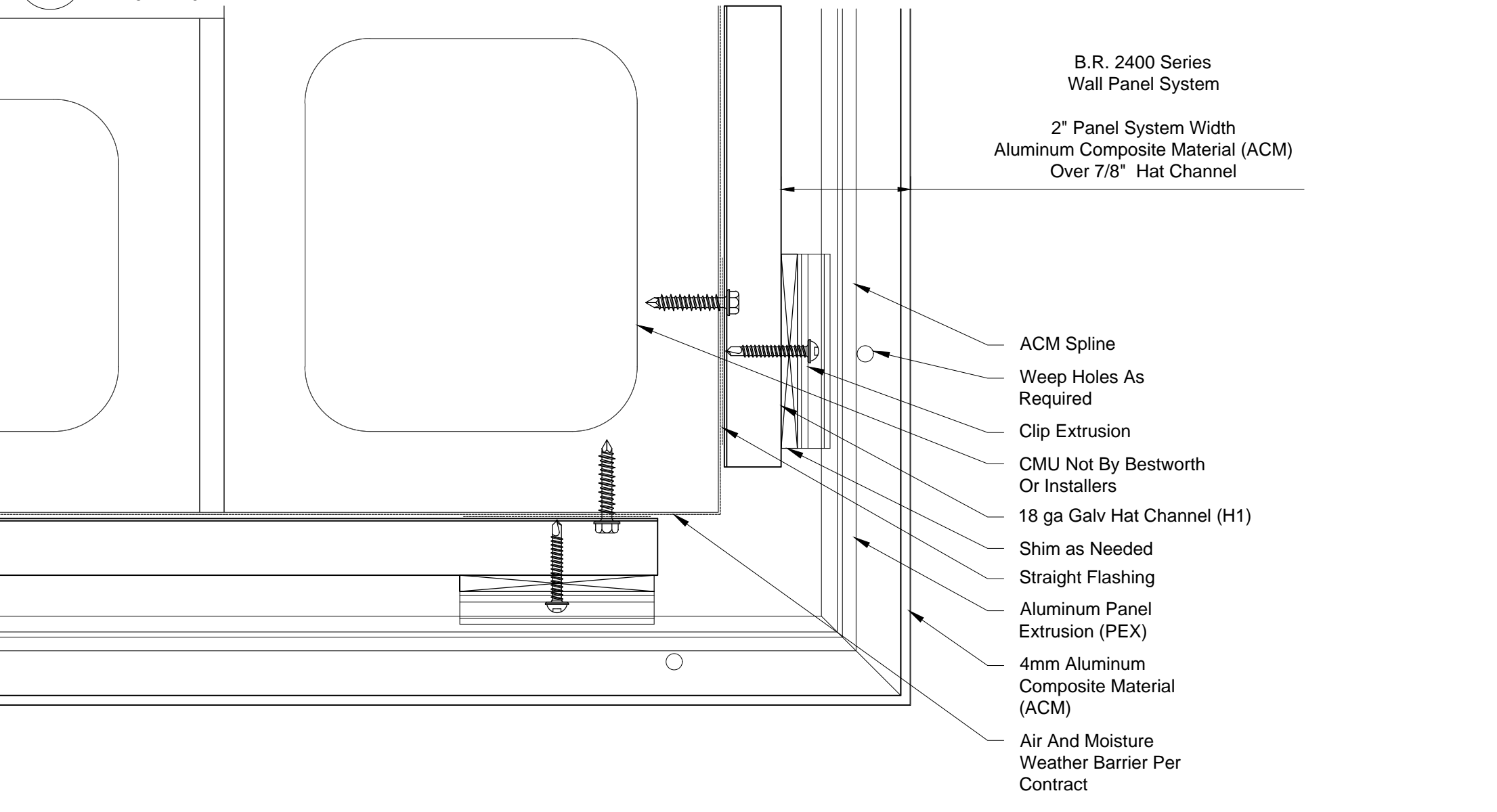
15 2400 ACM @ Soffit Termination - CMU
6" = 1'-0"



16 2400 ACM @ ACM Top Cap - CMU
6" = 1'-0"



17 2400 ACM @ Termination - CMU
6" = 1'-0"



18 2400 ACM @ Outside Corner - CMU
6" = 1'-0"

Standard 2400 ACM CMU Framing Details

IF YOU ARE INTERESTED IN USING THESE DETAILS IN YOUR DESIGN SHEETS, PLEASE CONTACT BESTWORTHROMMEL FOR ADDITIONAL CAD DRAWINGS, OR FURTHER INFORMATION REGARDING OUR PANEL SYSTEMS.



BESTWORTHROMMEL
19818 74TH Ave. N.E.
Arlington, WA 98223
360.435.2927 PHONE - 360.435.3617 FAX
www.bestworth.com