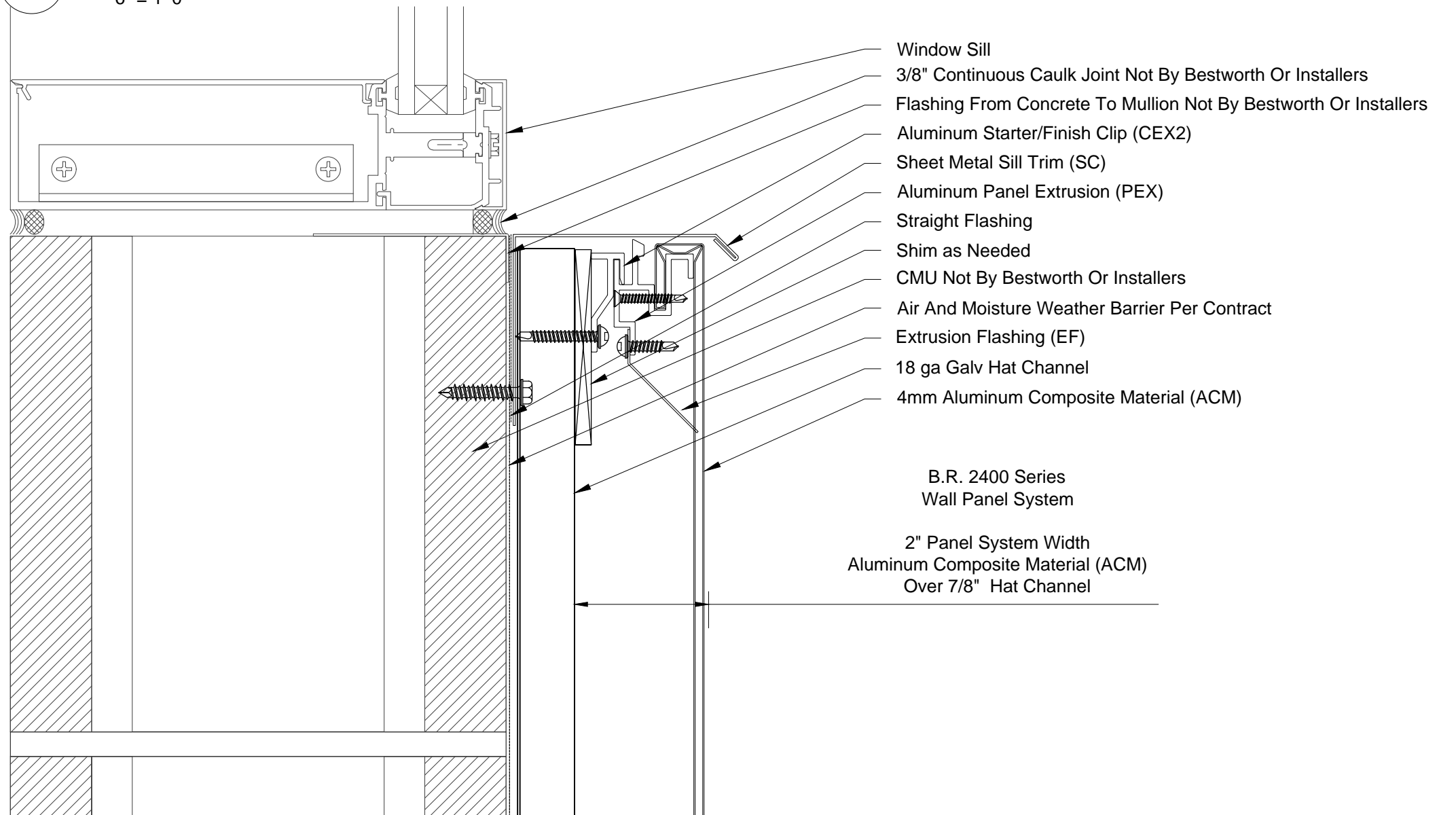
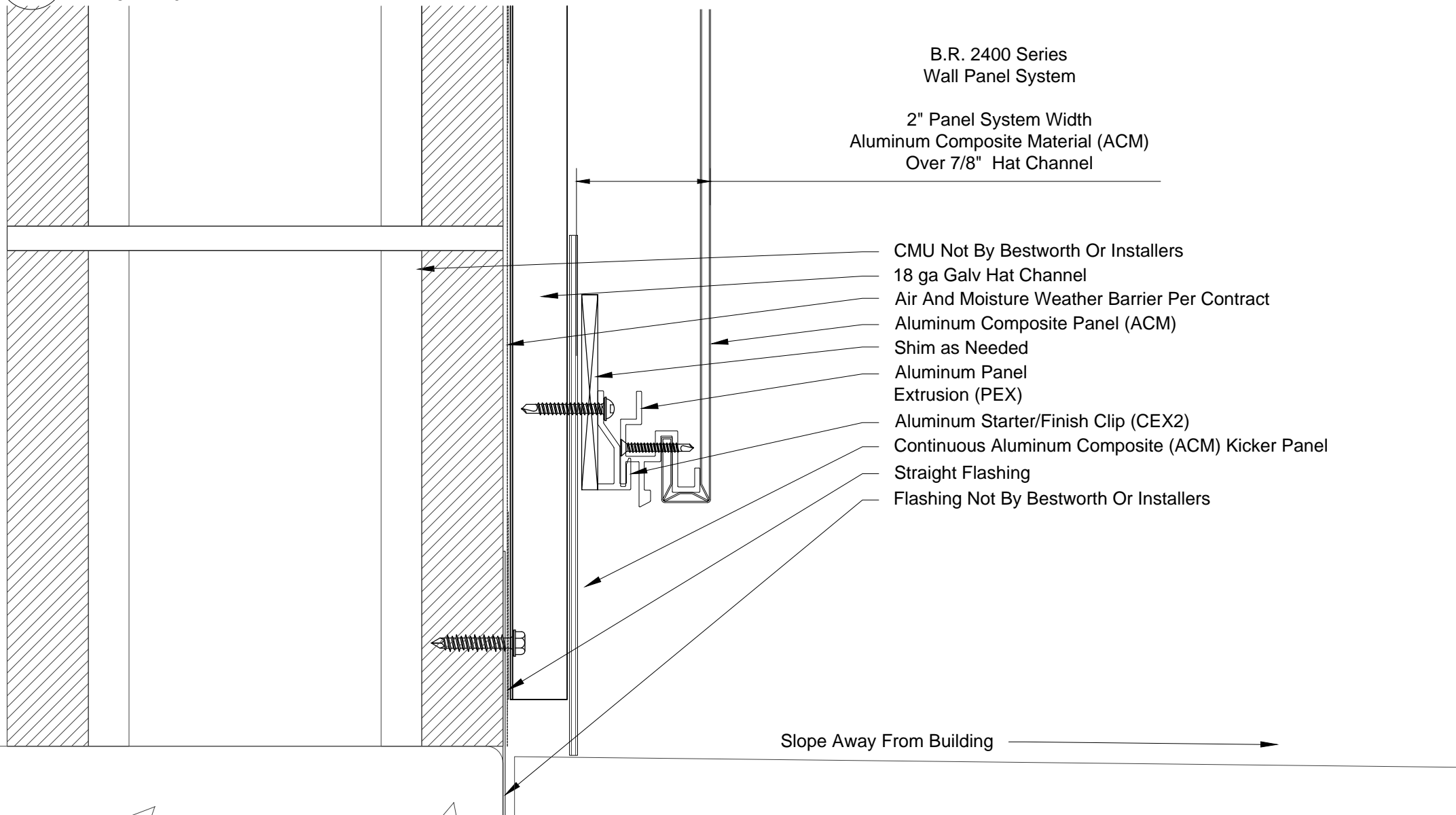


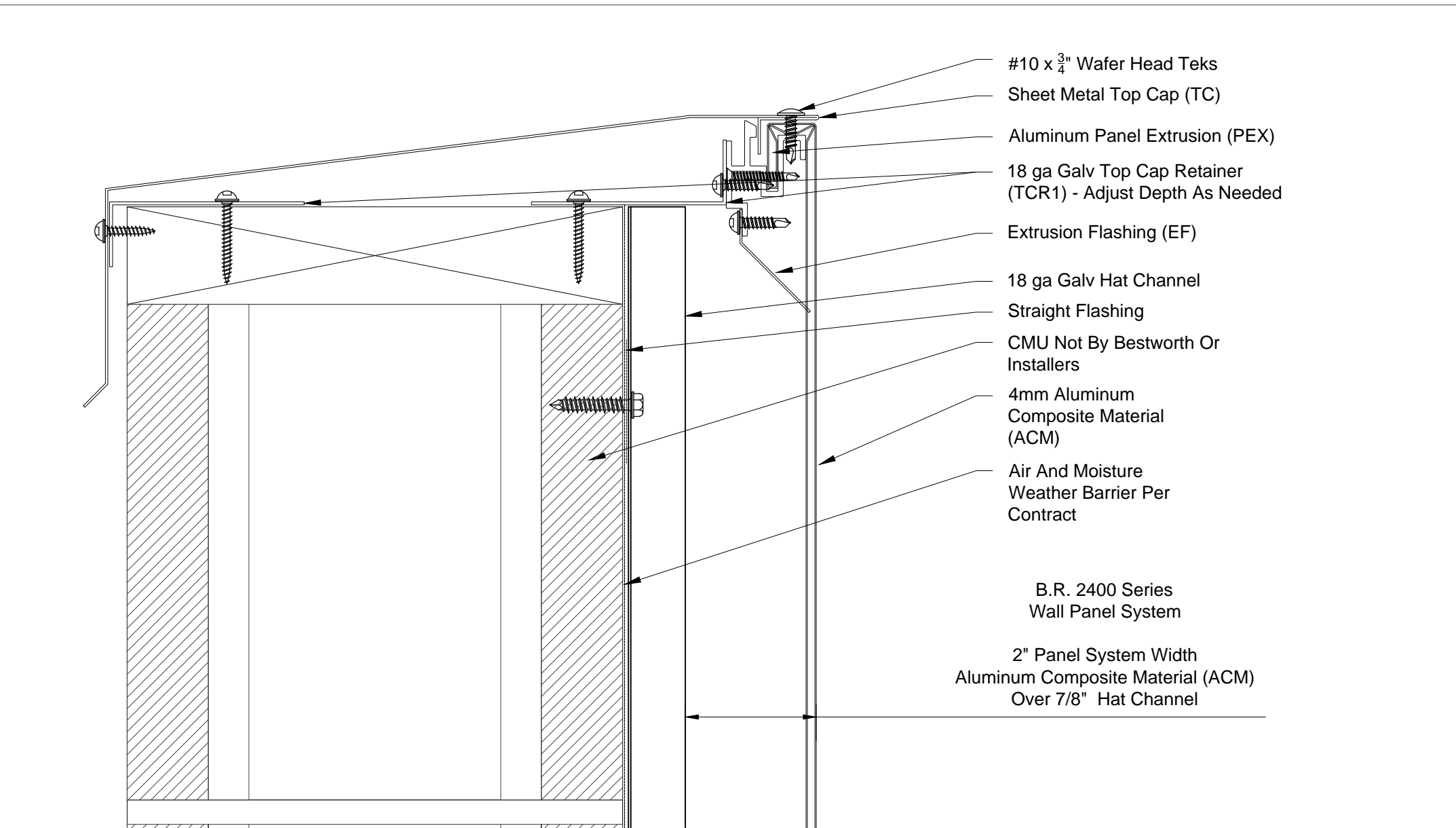
01 2400 ACM @ Window Header - CMU  
6" = 1'-0"



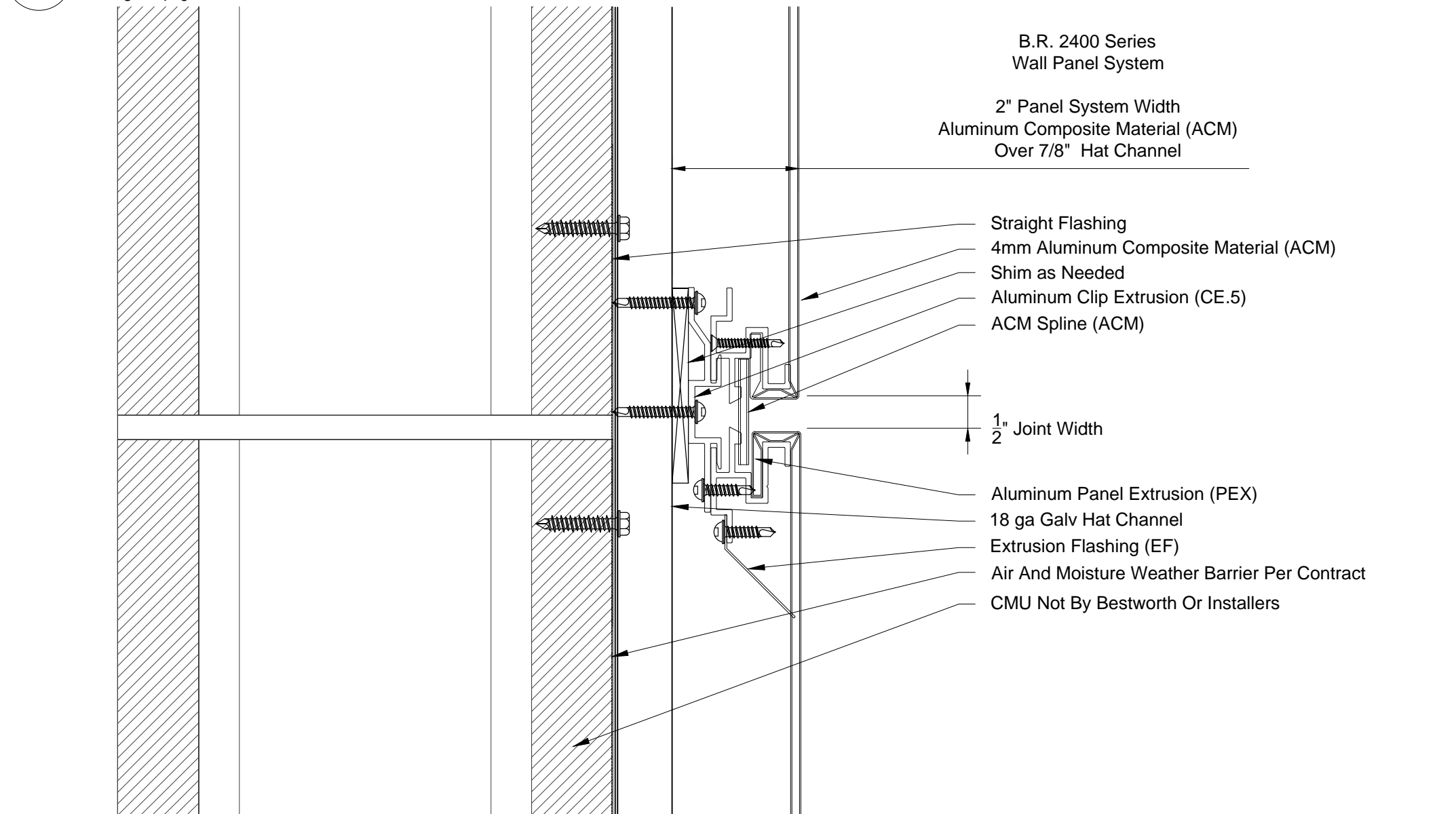
02 2400 ACM @ Window Sill - CMU  
6" = 1'-0"



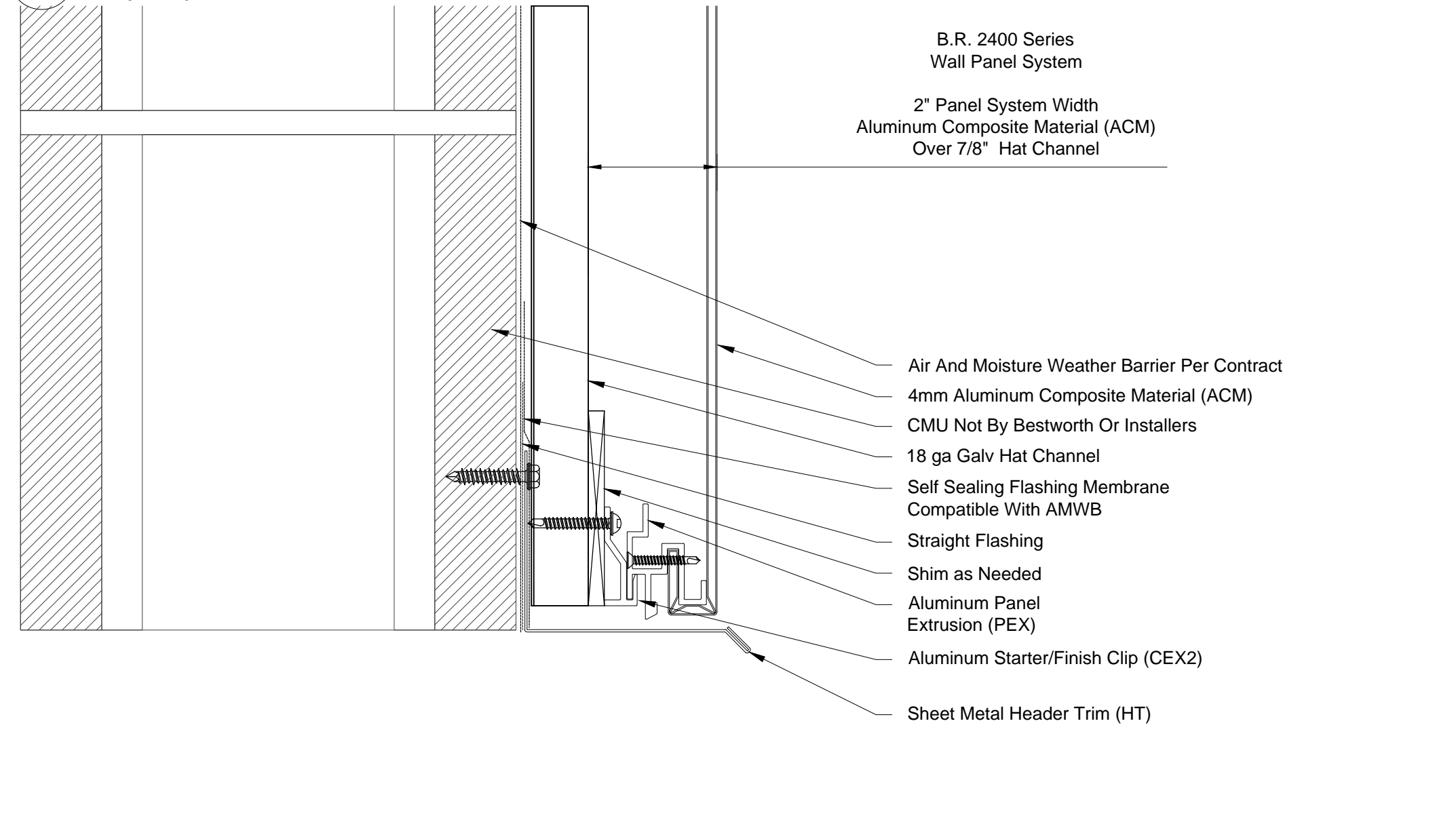
03 2400 ACM @ Base Condition - CMU  
6" = 1'-0"



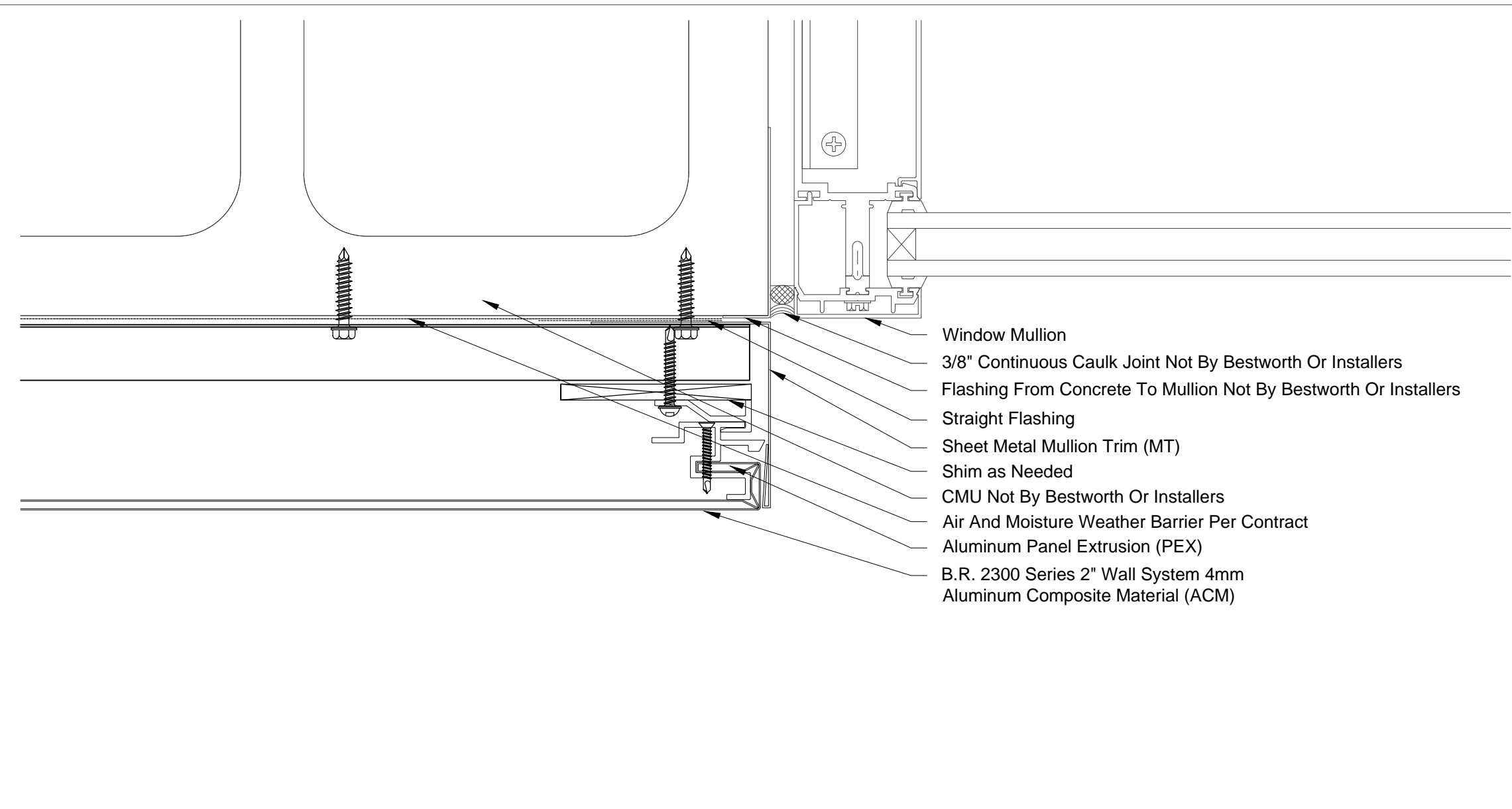
04 2400 ACM @ Sheet Metal Top Cap - CMU  
6" = 1'-0"



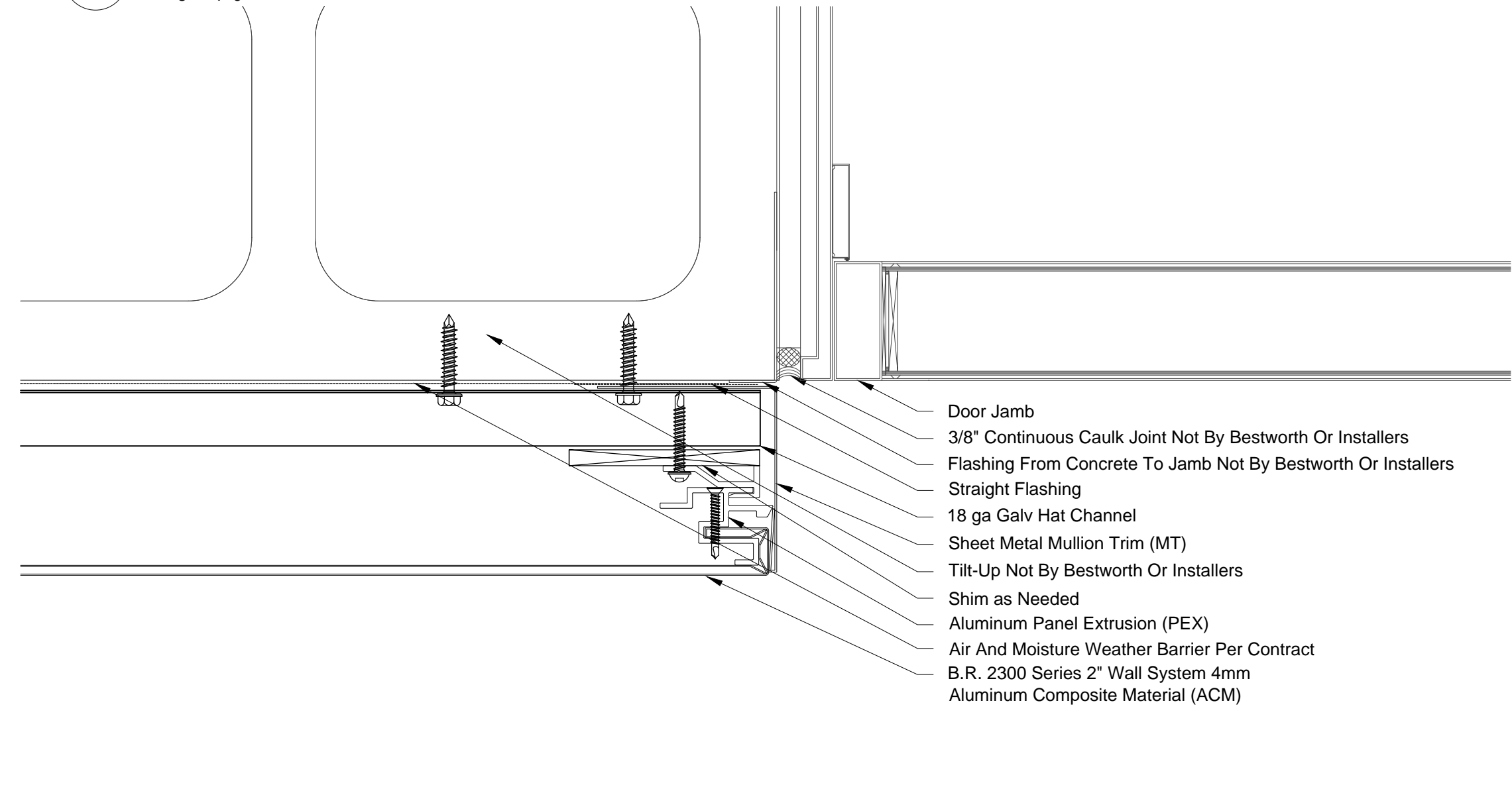
05 2400 ACM @ Panel Joint - CMU  
6" = 1'-0"



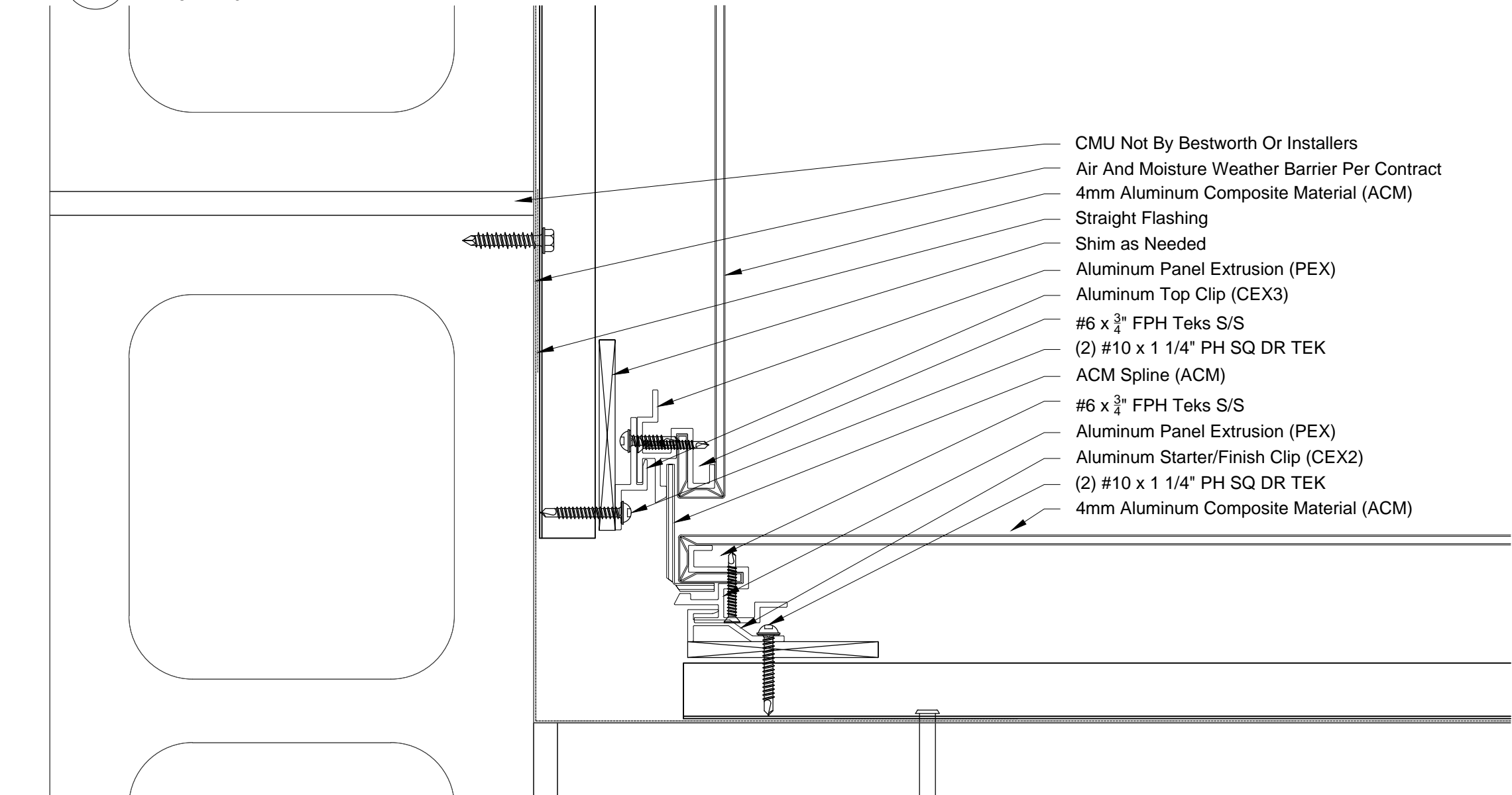
06 2400 ACM @ Soffit Termination - CMU  
6" = 1'-0"



07 2400 ACM @ Window Mullion - CMU  
6" = 1'-0"



08 2400 ACM @ Door Jamb - CMU  
6" = 1'-0"



09 2400 ACM @ Inside Corner - CMU  
6" = 1'-0"

**Standard 2400 ACM CMU Framing Details**

IF YOU ARE INTERESTED IN USING THESE DETAILS IN YOUR DESIGN SHEETS, PLEASE CONTACT BESTWORTHROMMEL FOR ADDITIONAL CAD DRAWINGS, OR FURTHER INFORMATION REGARDING OUR PANEL SYSTEMS.



**BESTWORTHROMMEL**  
19818 74TH Ave. N.E.  
Arlington, WA 98223  
360.435.2927 PHONE - 360.435.3617 FAX  
www.bestworth.com