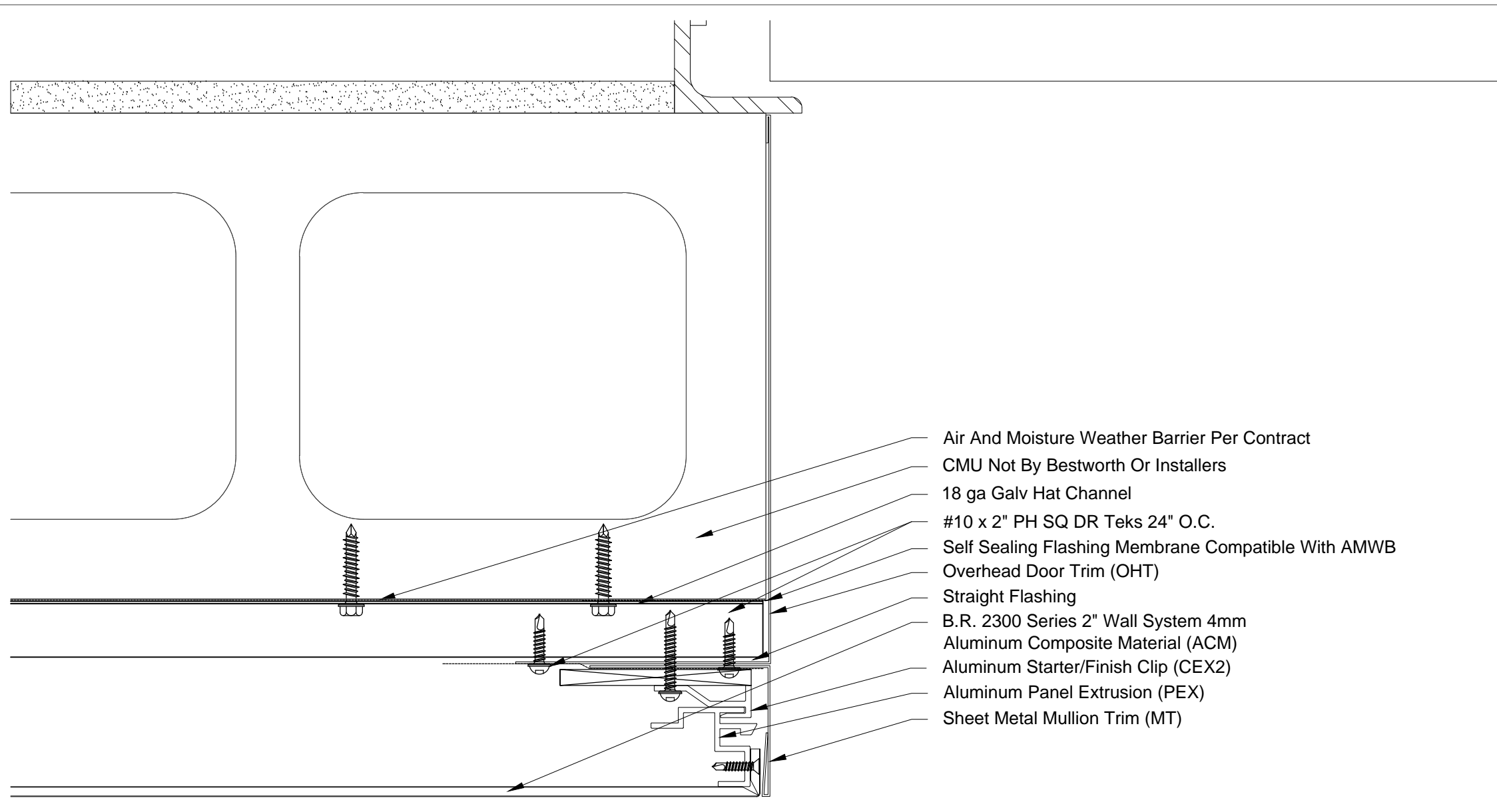
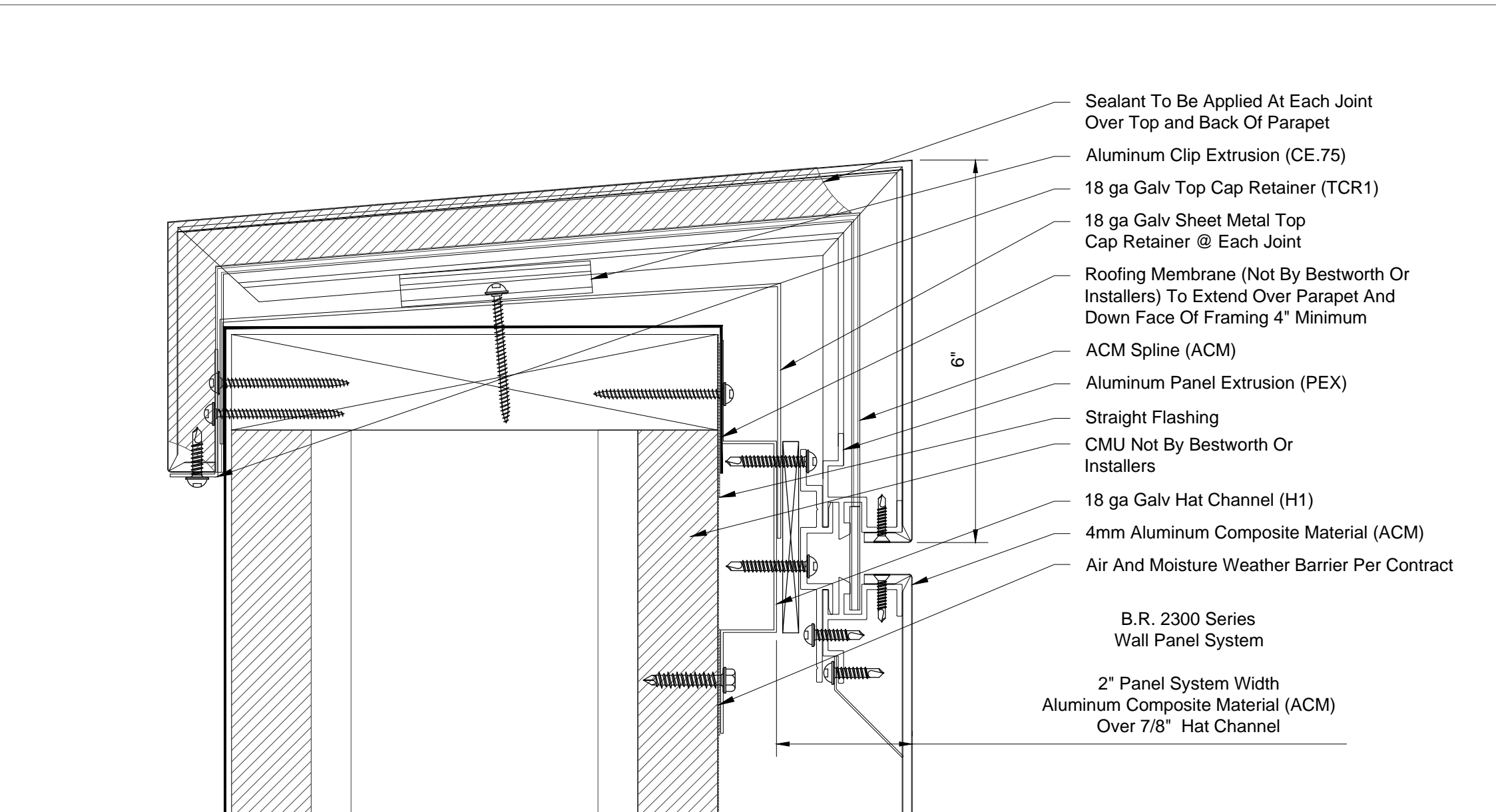


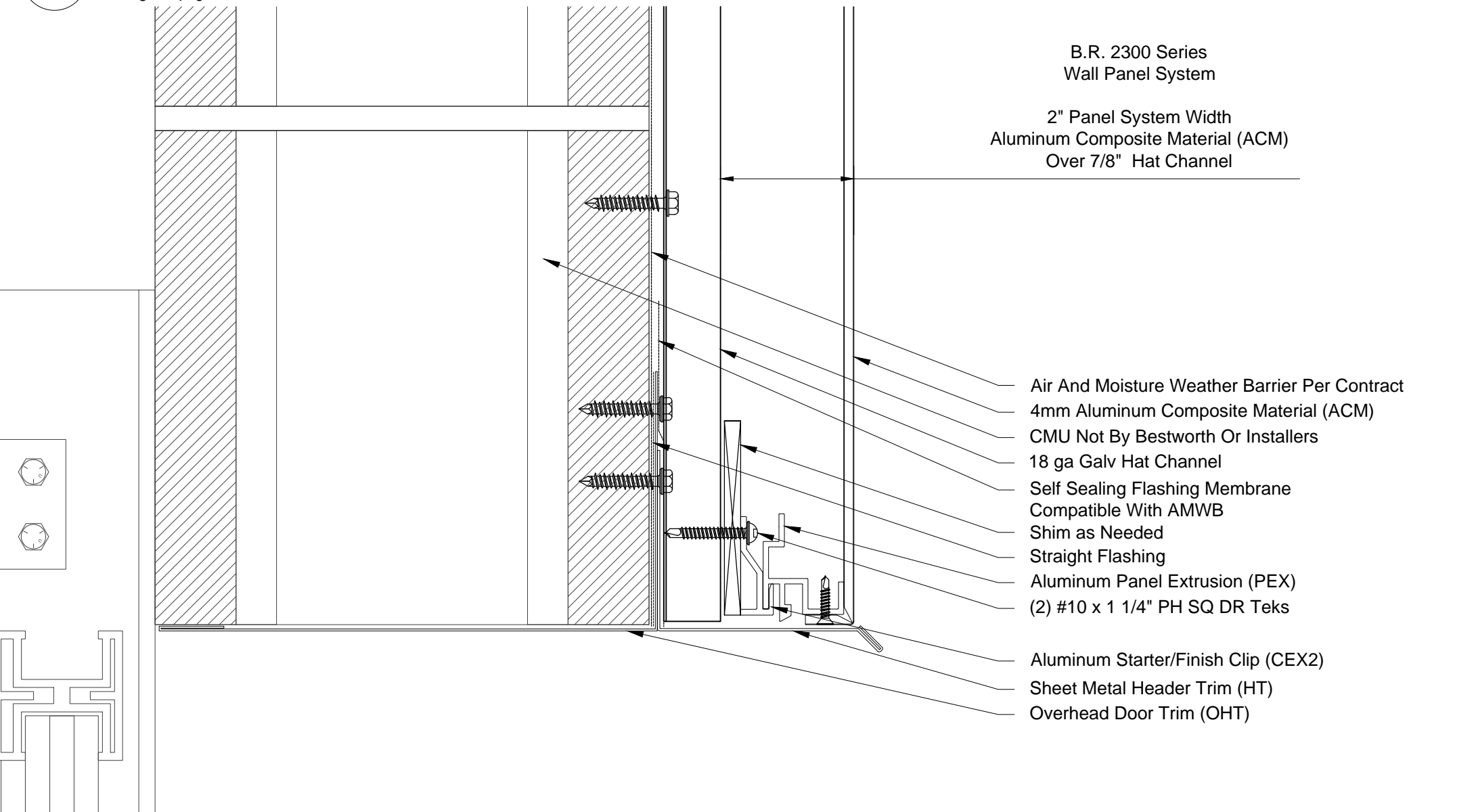
10 2300 ACM @ Door Header - CMU



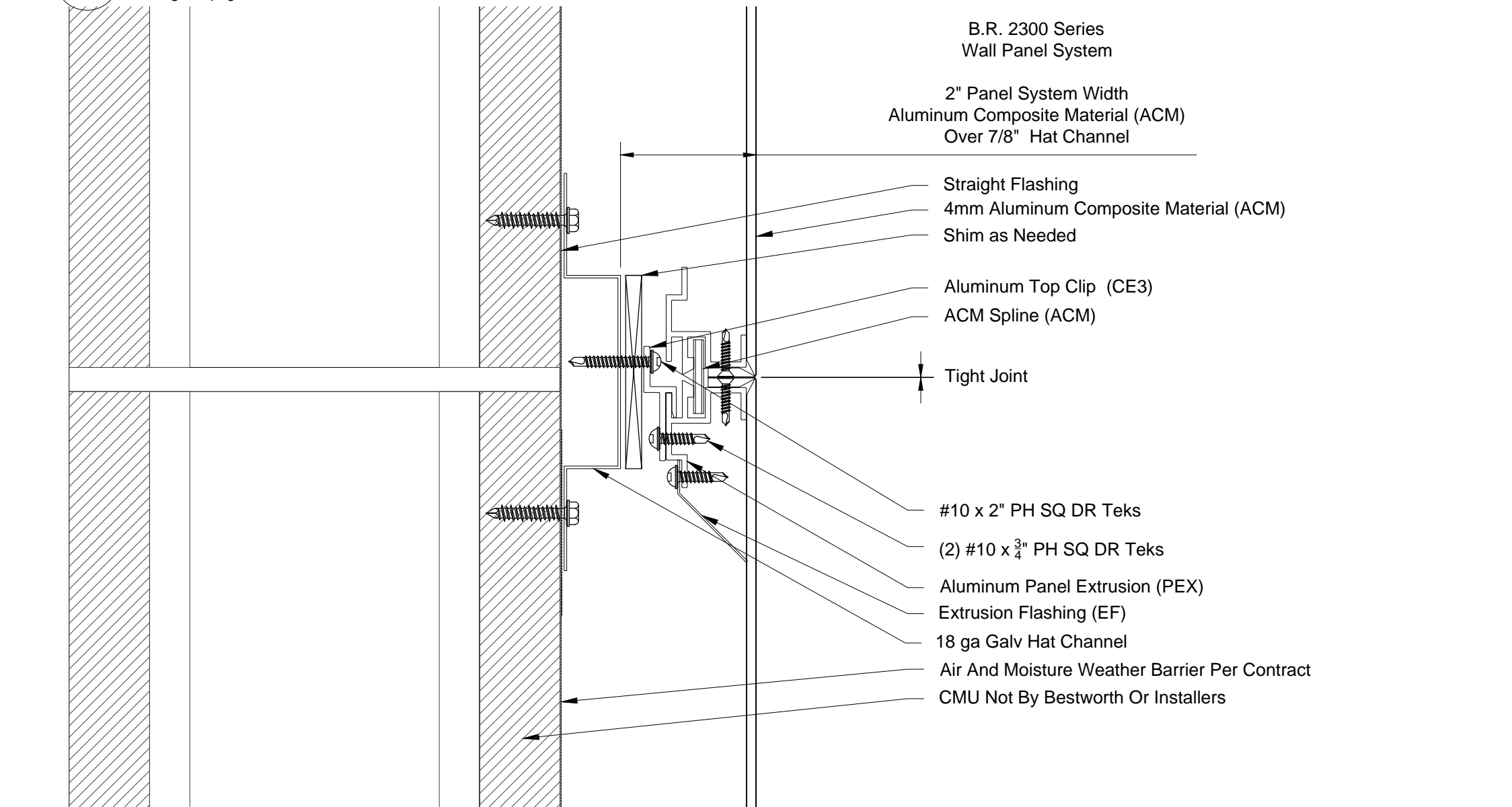
13 2300 ACM @ Overhead Door Jamb - CMU



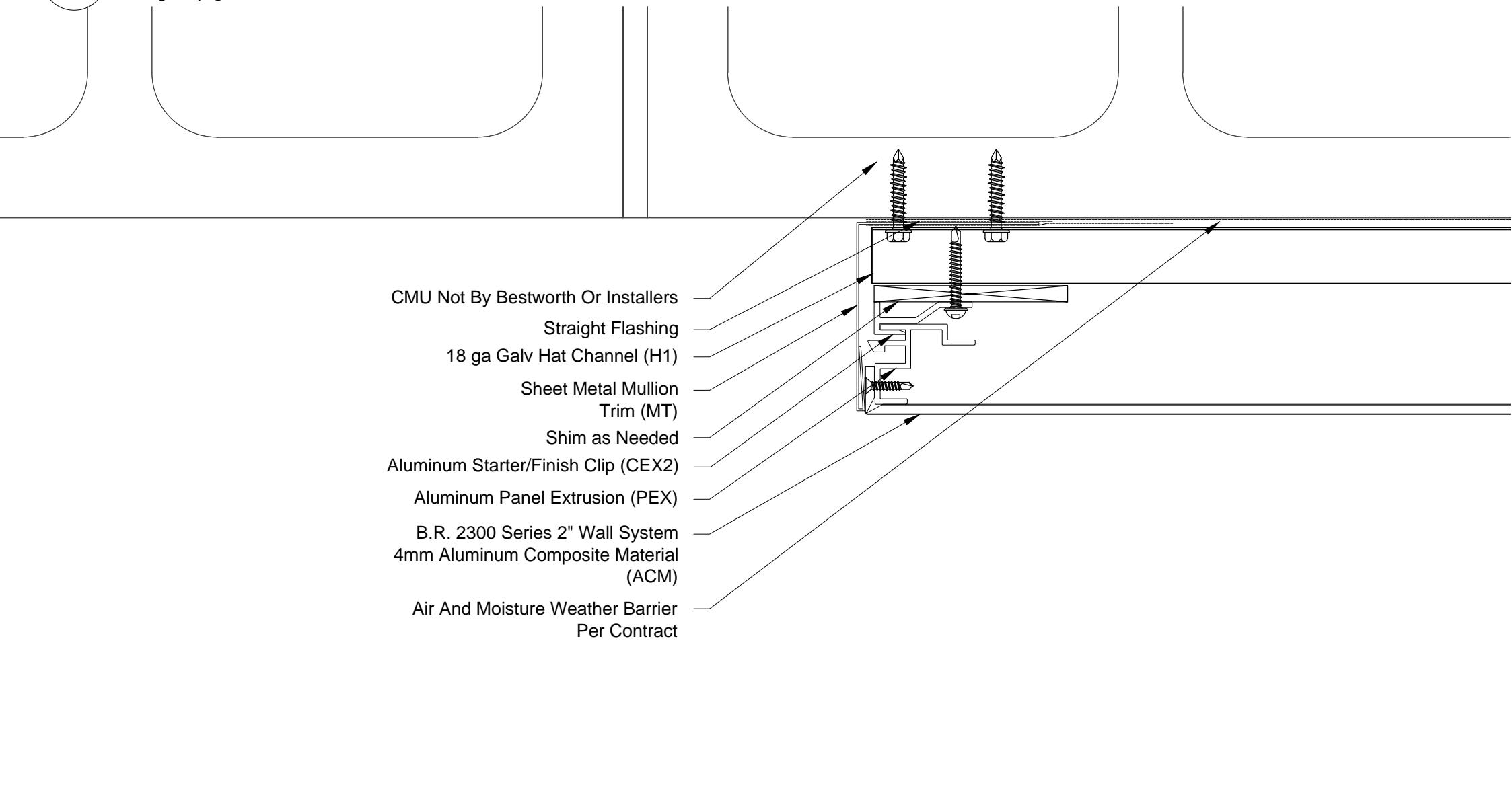
16 2300 ACM @ ACM Top Cap - CMU



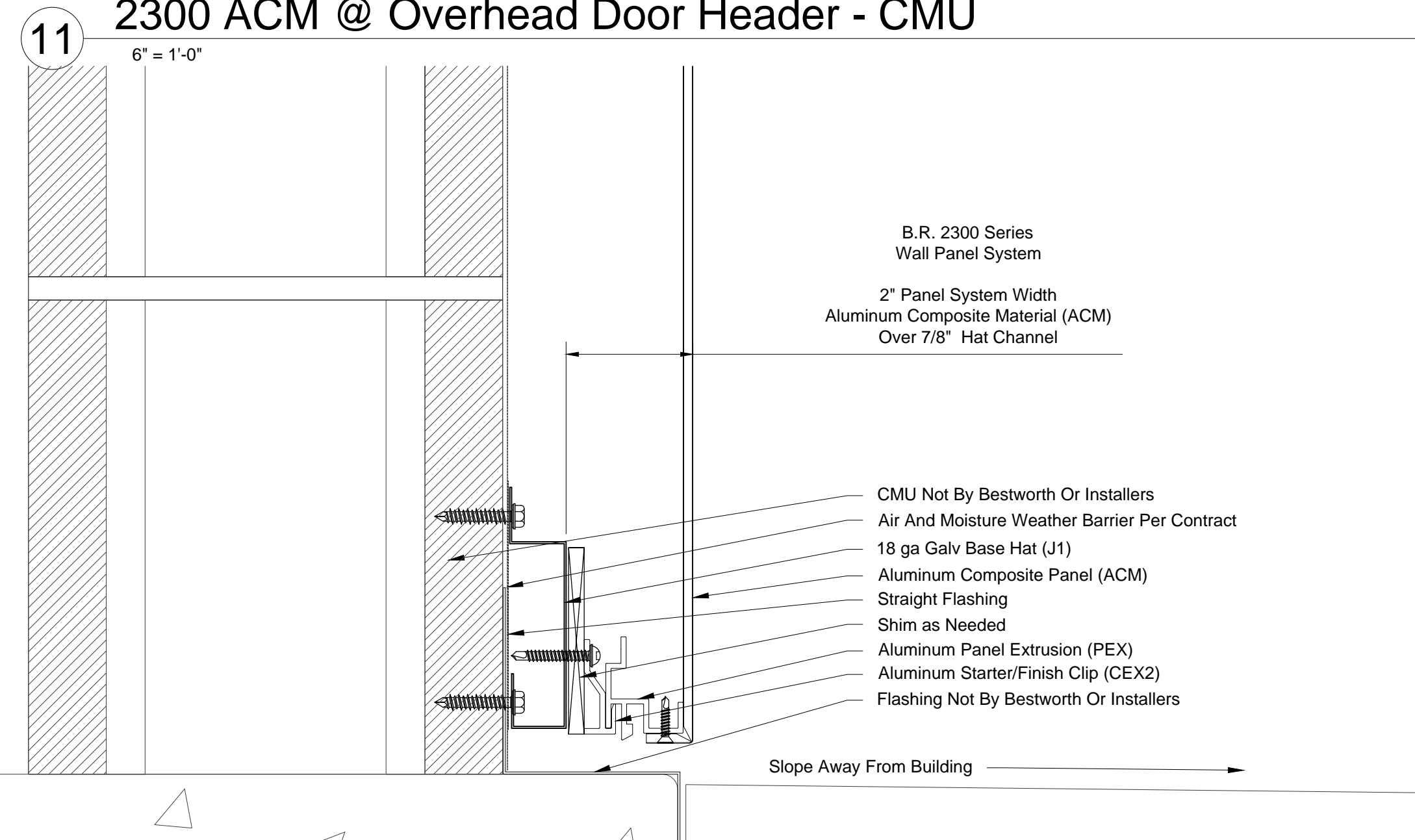
11 2300 ACM @ Overhead Door Header - CMU



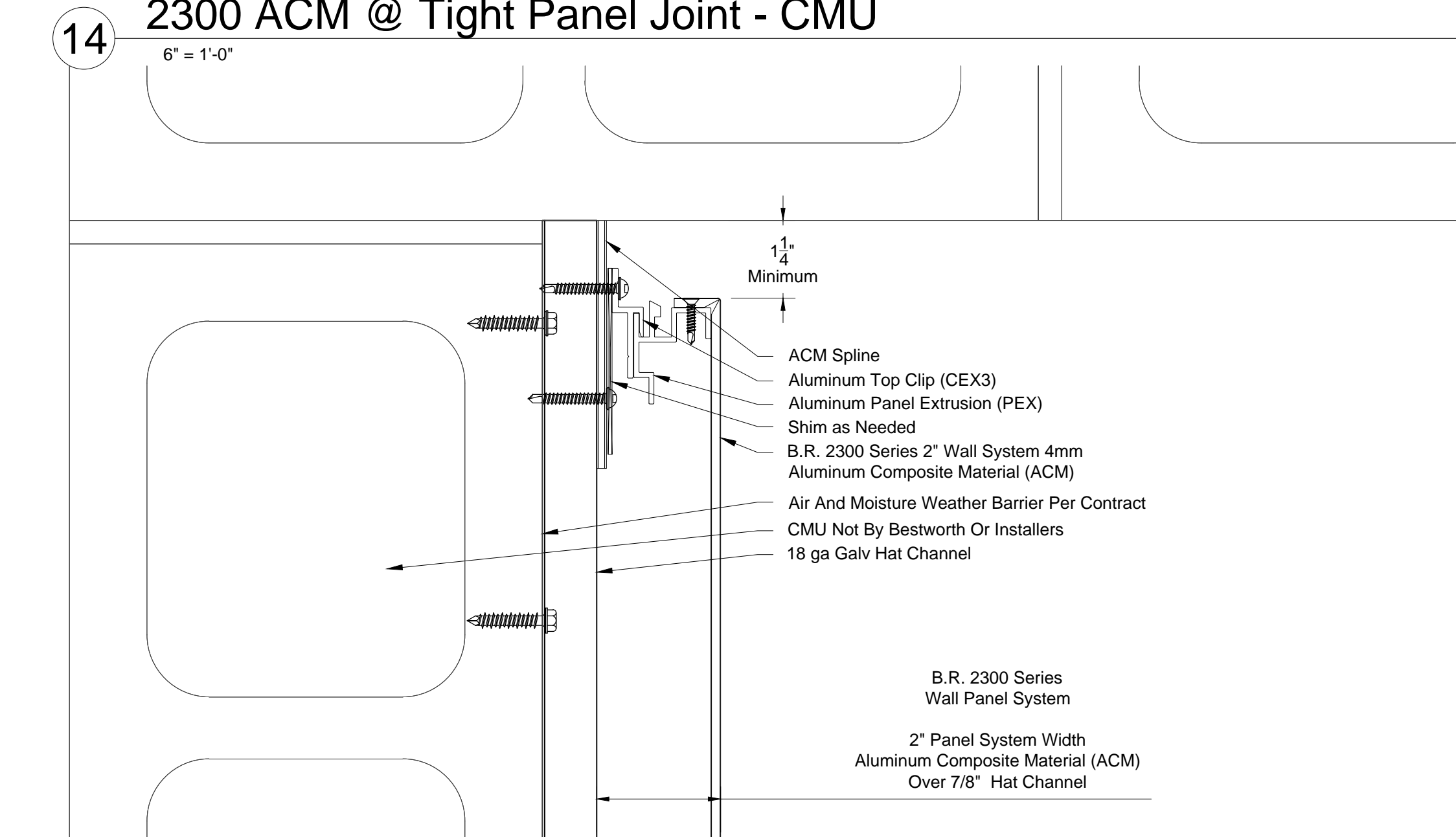
14 2300 ACM @ Tight Panel Joint - CMU



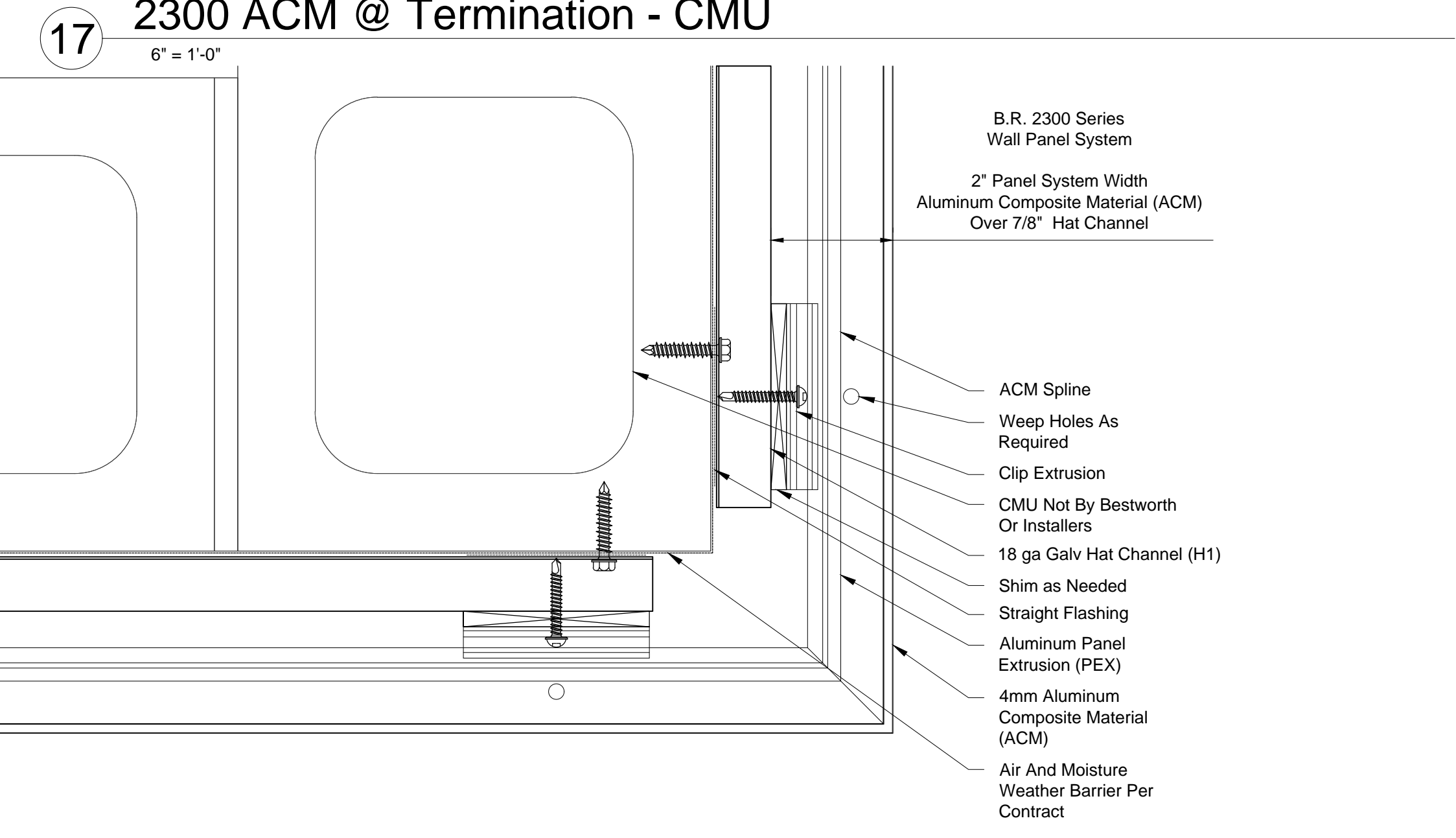
17 2300 ACM @ Termination - CMU



12 2300 ACM @ Base Condition - CMU



15 2300 ACM @ Soffit Termination - CMU



18 2300 ACM @ Outside Corner - CMU

Standard 2300 ACM CMU Framing Details

IF YOU ARE INTERESTED IN USING THESE DETAILS IN YOUR DESIGN SHEETS, PLEASE CONTACT BESTWORTHROMMEL FOR ADDITIONAL CAD DRAWINGS, OR FURTHER INFORMATION REGARDING OUR PANEL SYSTEMS.



BESTWORTHROMMEL
19818 74TH Ave. N.E.
Arlington, WA 98223
360.435.2927 PHONE - 360.435.3617 FAX
www.bestworth.com