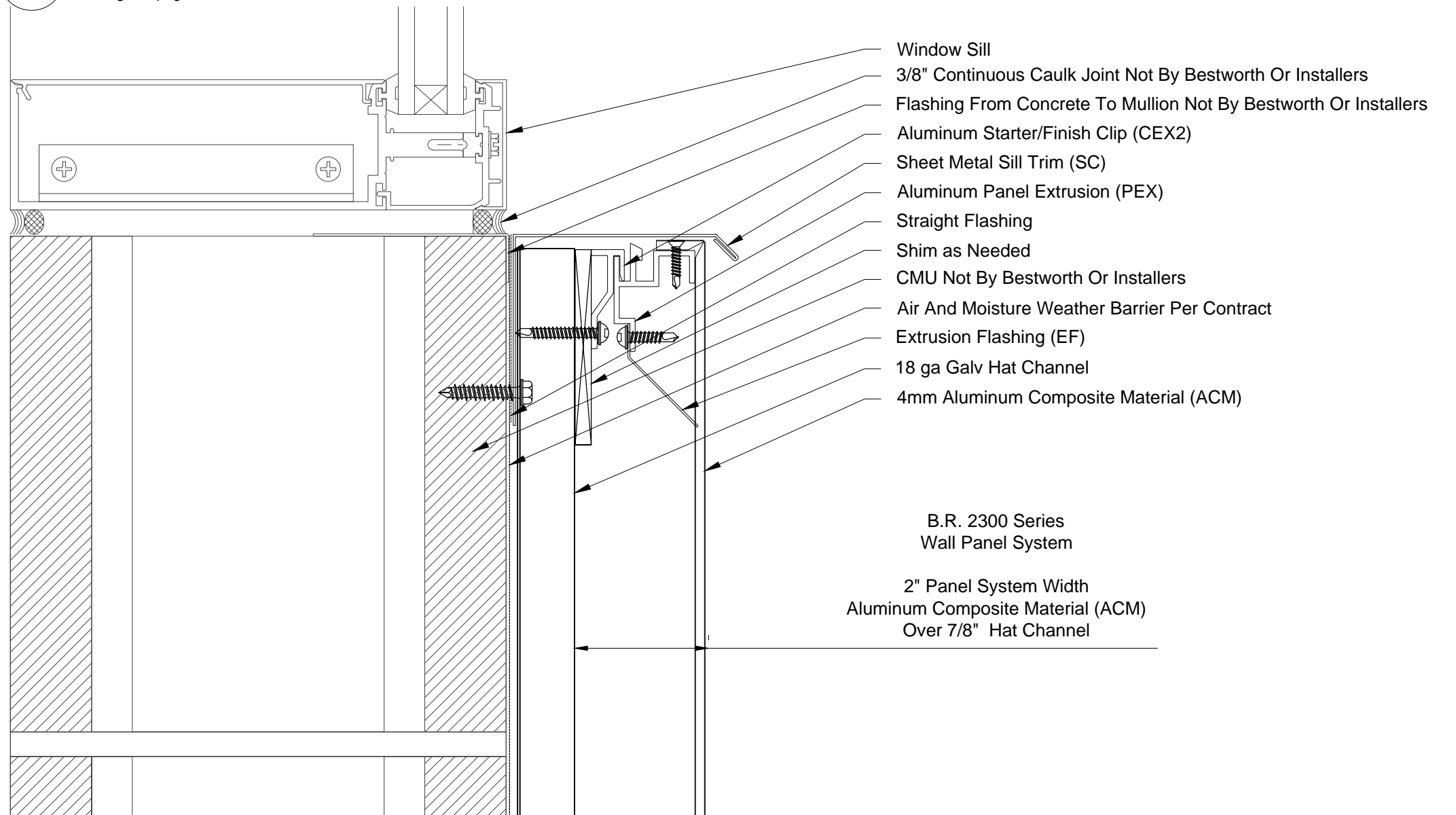
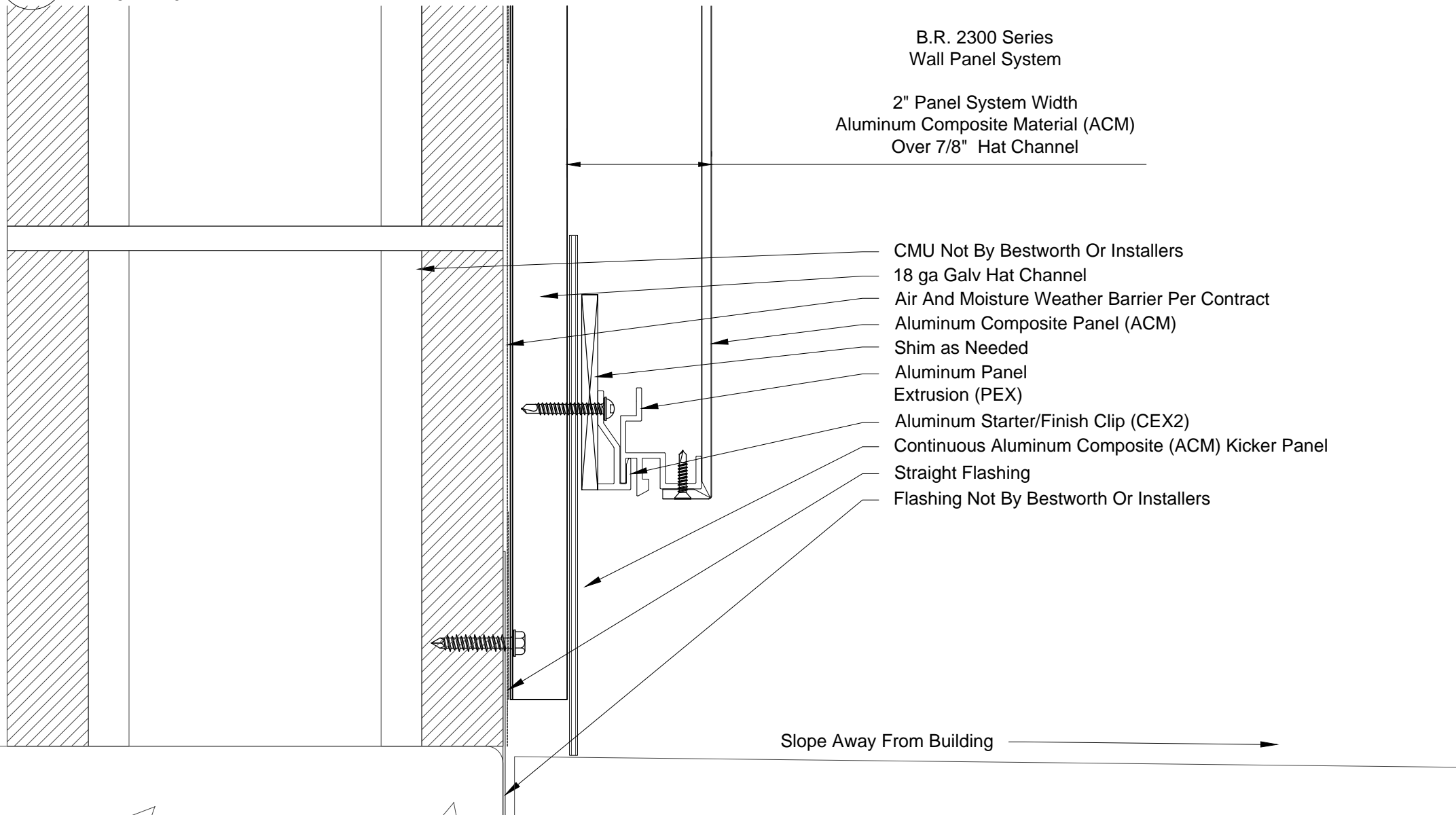


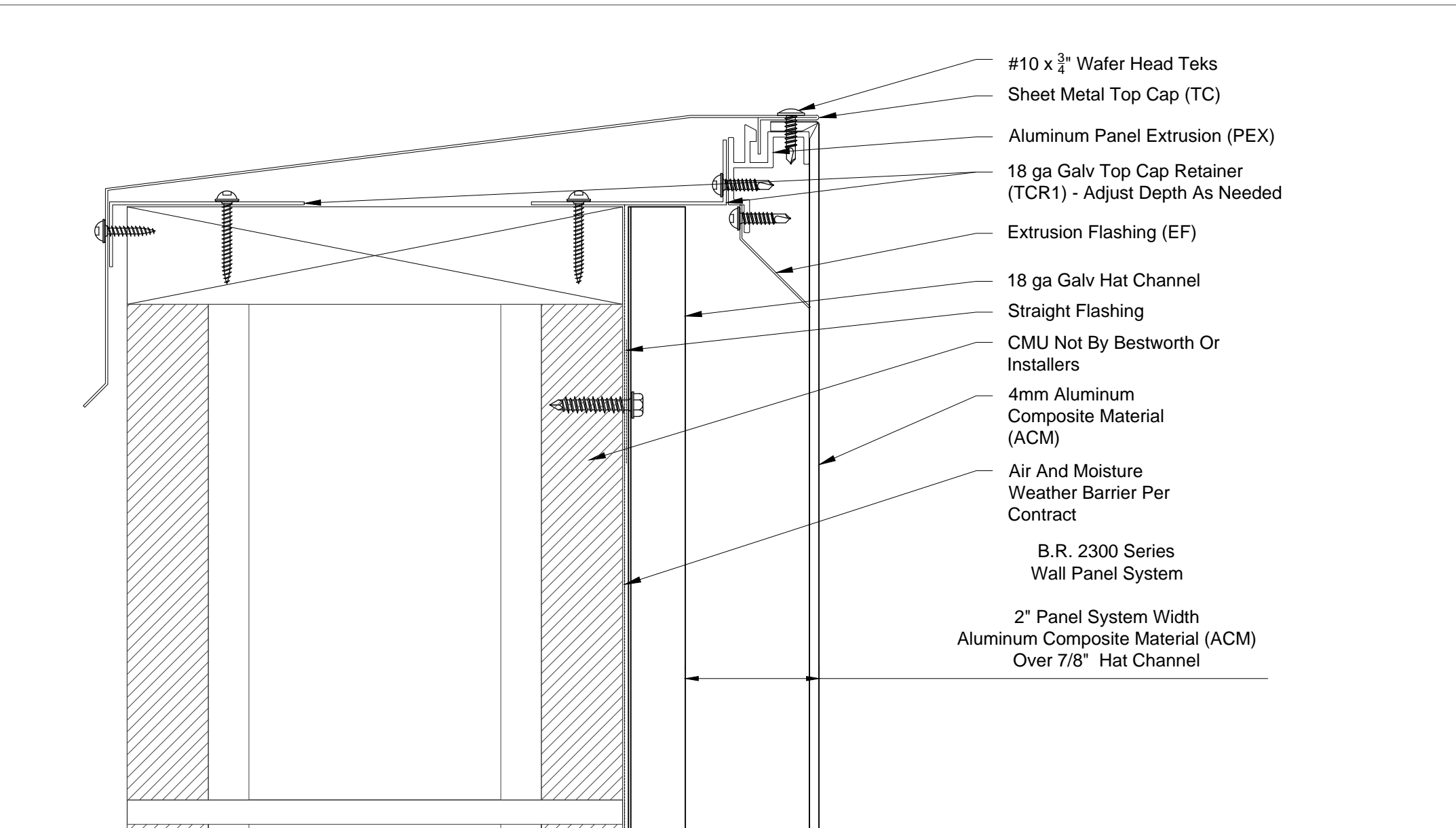
01 2300 ACM @ Window Header - CMU
6" = 1'-0"



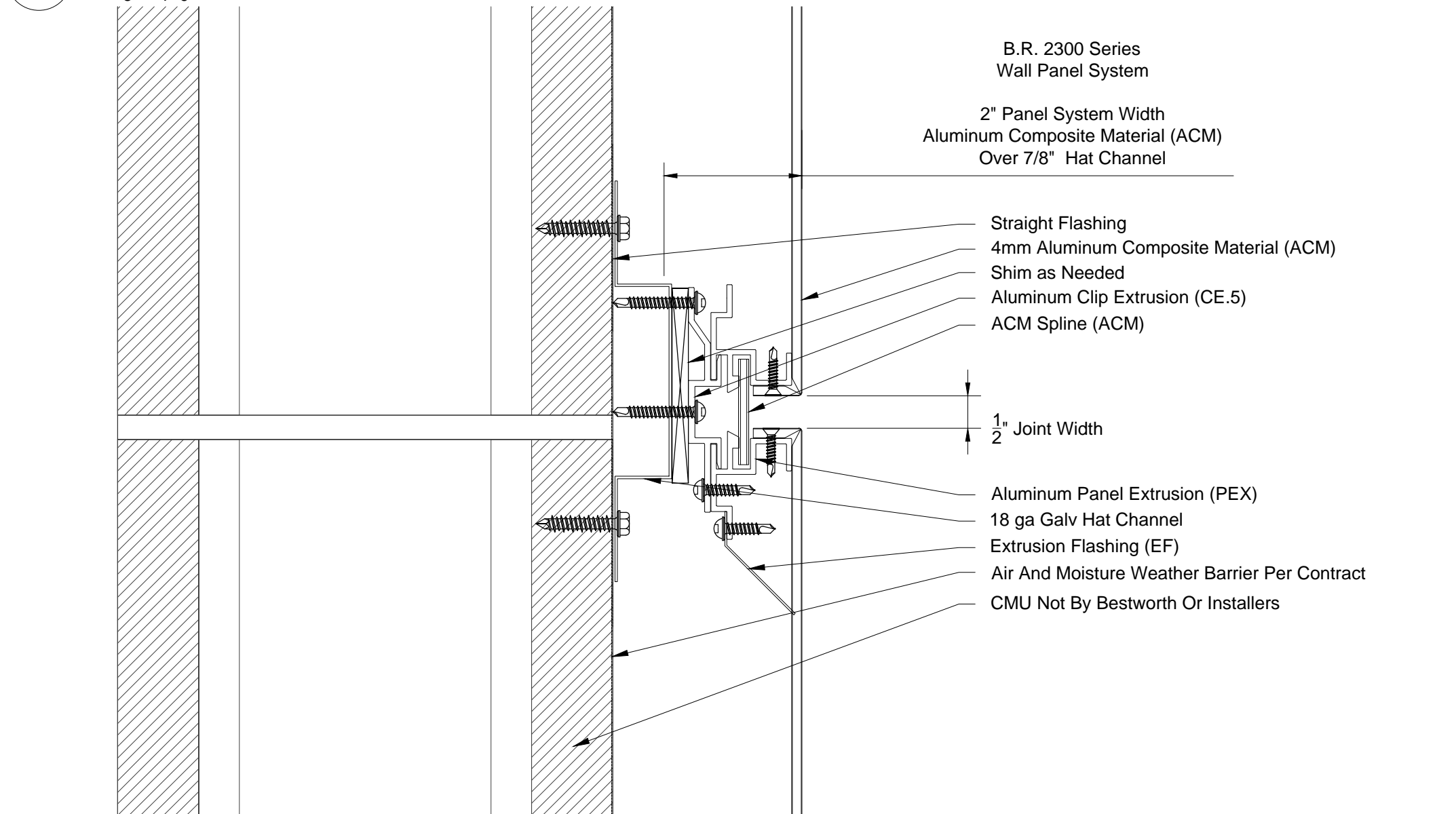
02 2300 ACM @ Window Sill - CMU
6" = 1'-0"



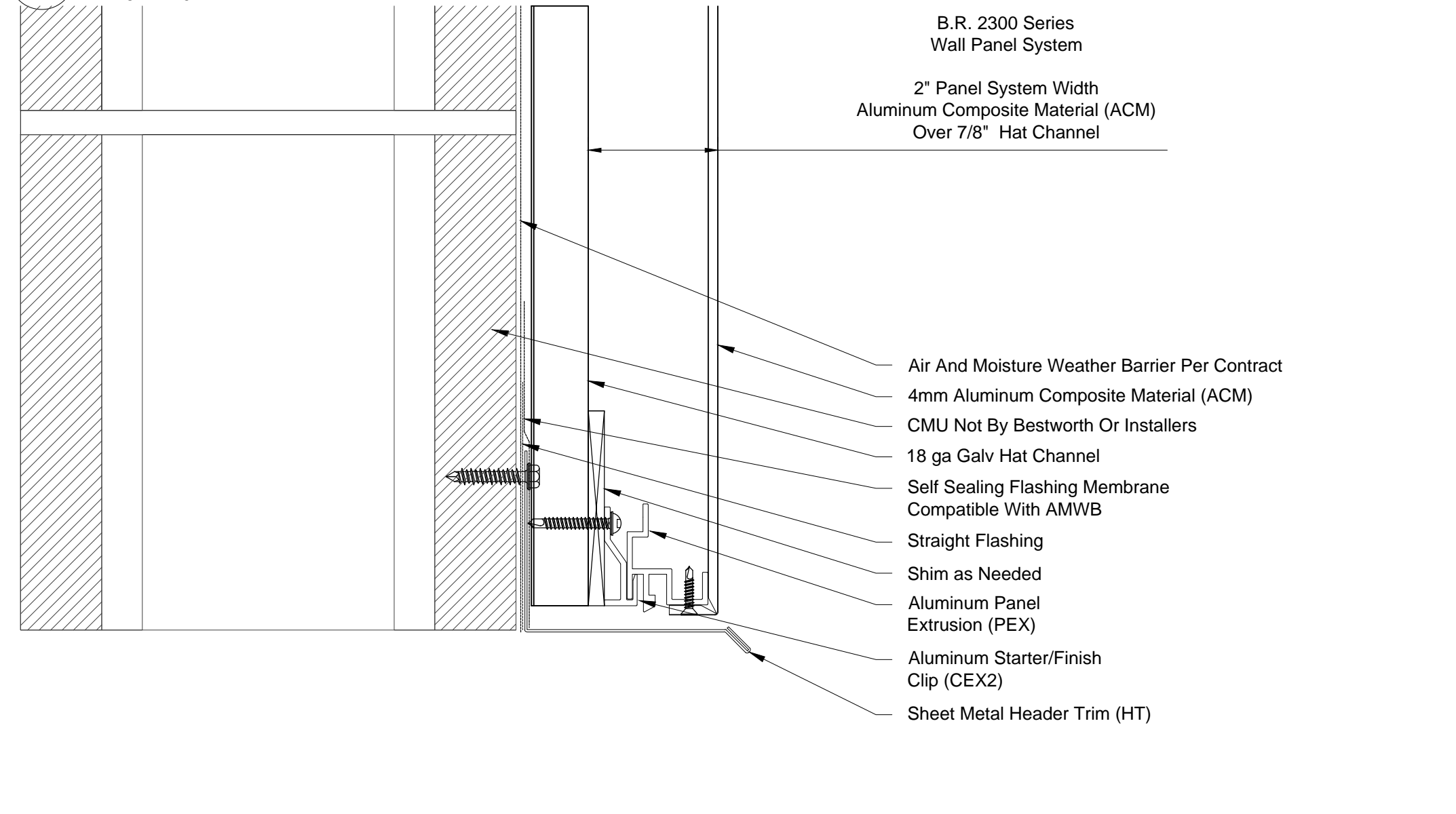
03 2300 ACM @ Base Condition - CMU
6" = 1'-0"



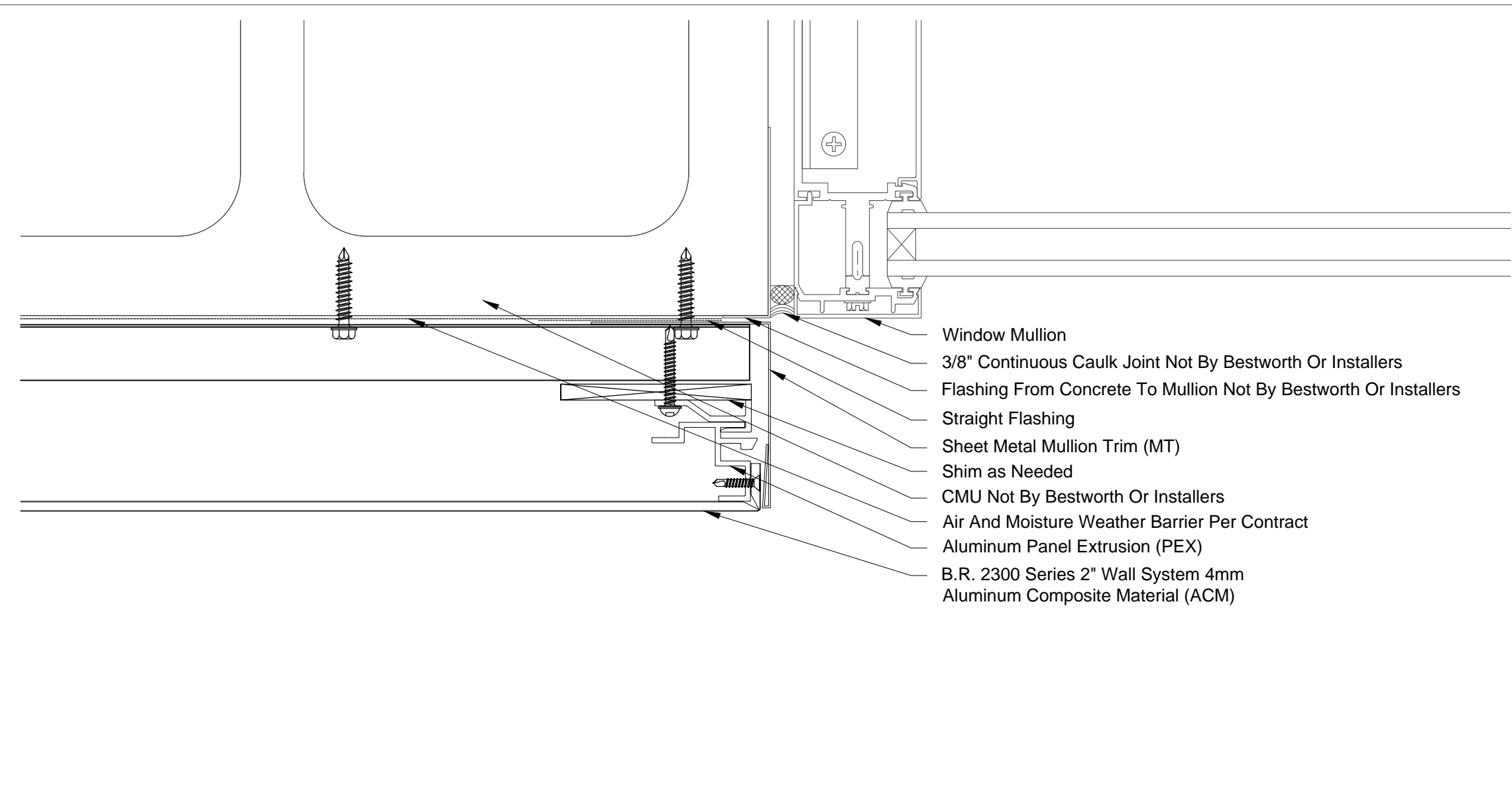
04 2300 ACM @ Sheet Metal Top Cap - CMU
6" = 1'-0"



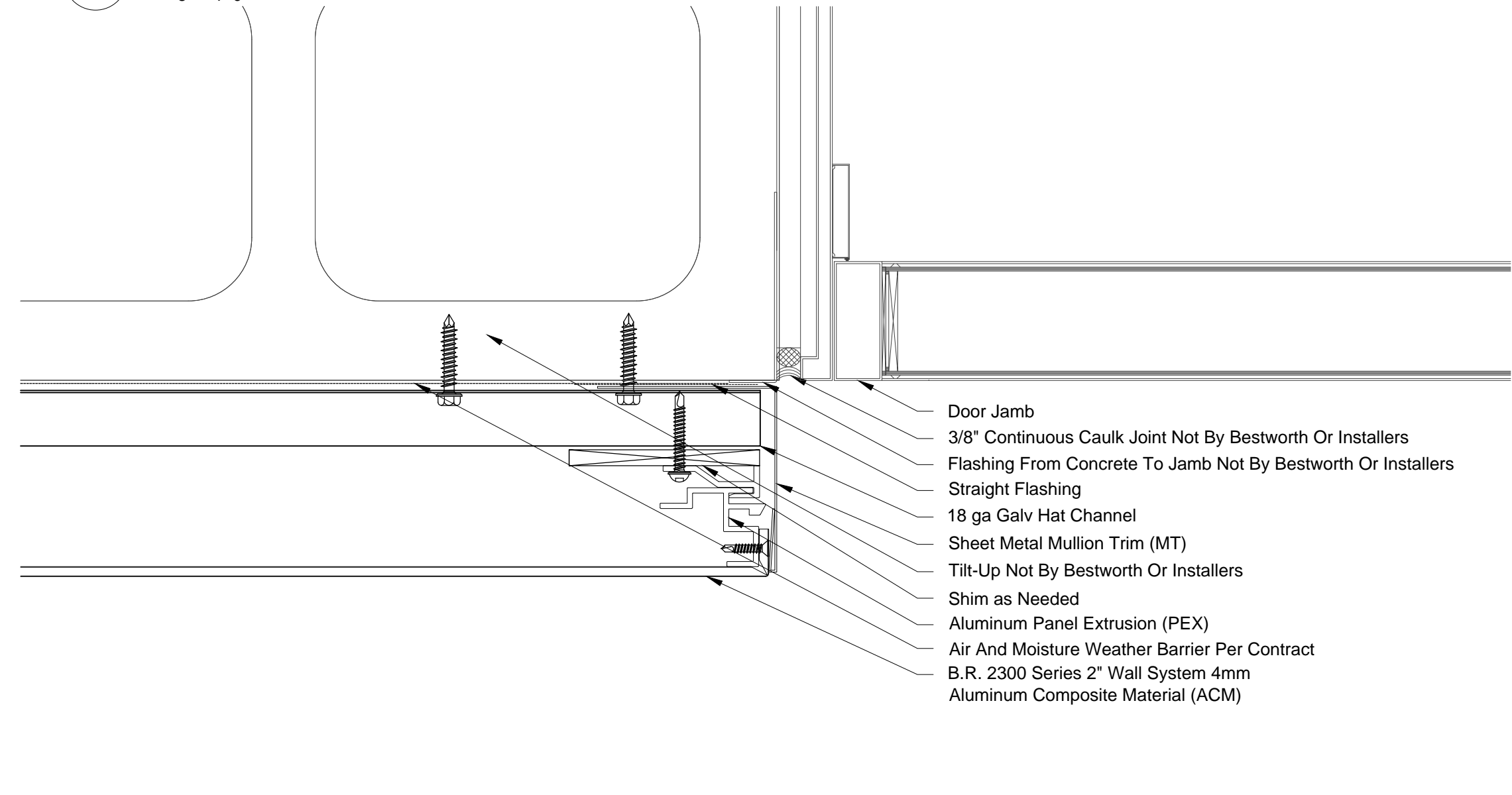
05 2300 ACM @ Panel Joint - CMU
6" = 1'-0"



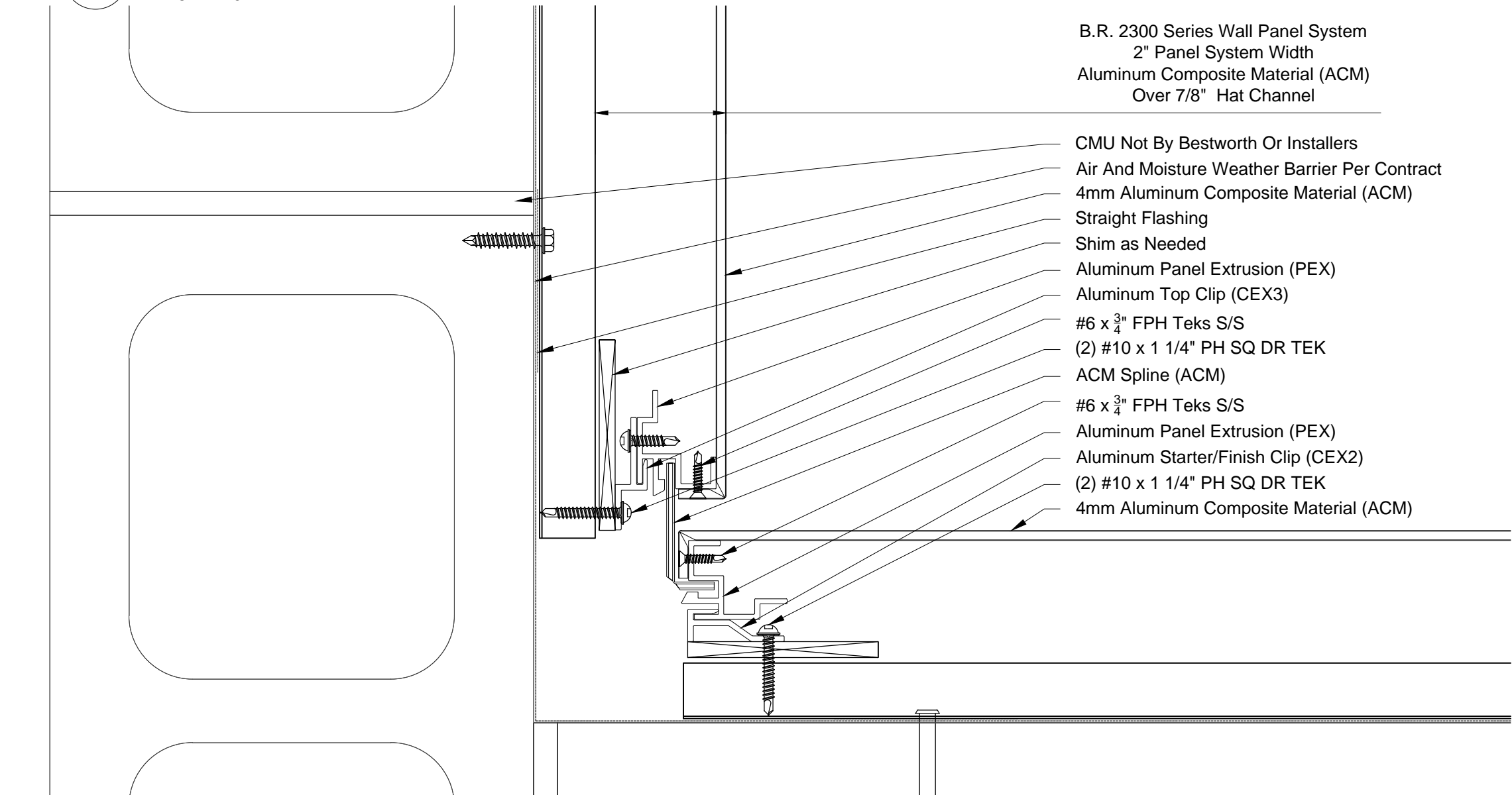
06 2300 ACM @ Soffit Termination - CMU
6" = 1'-0"



07 2300 ACM @ Window Mullion - CMU
6" = 1'-0"



08 2300 ACM @ Door Jamb - CMU
6" = 1'-0"



09 2300 ACM @ Inside Corner - CMU
6" = 1'-0"

Standard 2300 ACM CMU Framing Details

IF YOU ARE INTERESTED IN USING THESE DETAILS IN YOUR DESIGN SHEETS, PLEASE CONTACT BESTWORTHROMMEL FOR ADDITIONAL CAD DRAWINGS, OR FURTHER INFORMATION REGARDING OUR PANEL SYSTEMS.



BESTWORTHROMMEL
19818 74TH Ave. N.E.
Arlington, WA 98223
360.435.2927 PHONE - 360.435.3617 FAX
www.bestworth.com